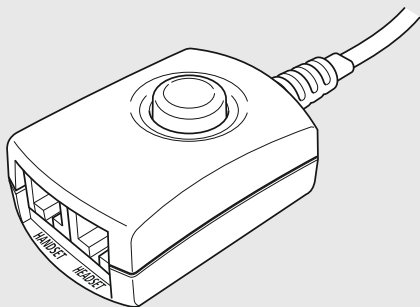


# EPOS

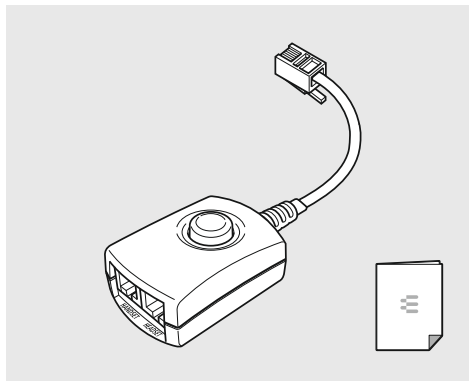


## UI 710

Universal interface

- |                     |                                |                        |
|---------------------|--------------------------------|------------------------|
| EN Quick Guide      | EL Γρήγορος οδηγός             | RU Краткое руководство |
| DE Kurzanleitung    | DA Kvikvejledning              | ZH 快速入门指南              |
| FR Guide express    | SV Snabbguide                  | TW 快速指南                |
| IT Guida rapida     | FI Pikaopas                    | TR Hızlı Kılavuz       |
| ES Guía rápida      | PL Skrócona instrukcja obsługi | JA クイックガイド             |
| PT Guia Rápido      |                                | ID Panduan Cepat       |
| NL Mini handleiding |                                | KO 빠른 가이드              |

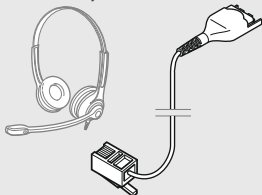
Package contents | Lieferumfang | Contenu de la boîte |  
 Contenuti della confezione | Contenido del embalaje |  
 Conteúdo da embalagem | Inhoud verpakking |  
 Περιεχόμενα συσκευασίας | Pakkens indhold |  
 Innehåll i förpackningen | Pakkauksen sisältö |  
 Zawartość opakowania | Содержимое упаковки |  
 套裝內容 | Kutunun içeriği | パッケージ内容 |  
 Isi kemasan | 패키지 내용



Connection possibilities | Anschlussmöglichkeiten |  
 Possibilités de raccordement | Possibilità di collegamento |  
 Posibilidades de conexión | Ligações possíveis |  
 Aansluitmogelijkheden | Διασυνδέσεις σύνδεσης |  
 Tilslutningsmuligheder | Anslutning | Liitântamahdollisuudet |  
 Możliwości podłączenia | Варианты подключения |  
 连接可能性 | 連接方式 | Bağlantı olanakları | 接続方法 |  
 Pilihan sambungan | 연결 방법

\*Accessory - not included

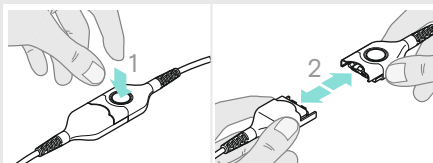
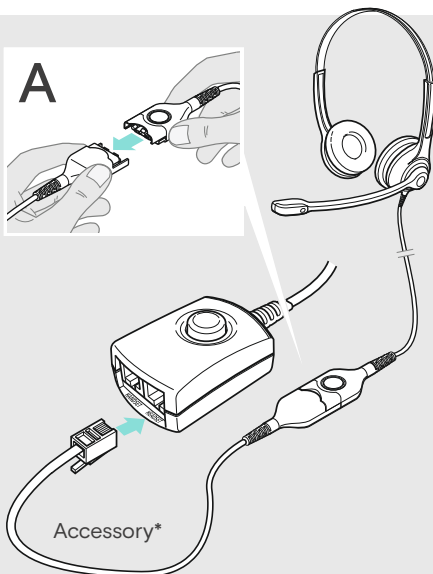
Headset Compatibility guide



[www.eposaudio.com/compatibility](http://www.eposaudio.com/compatibility)

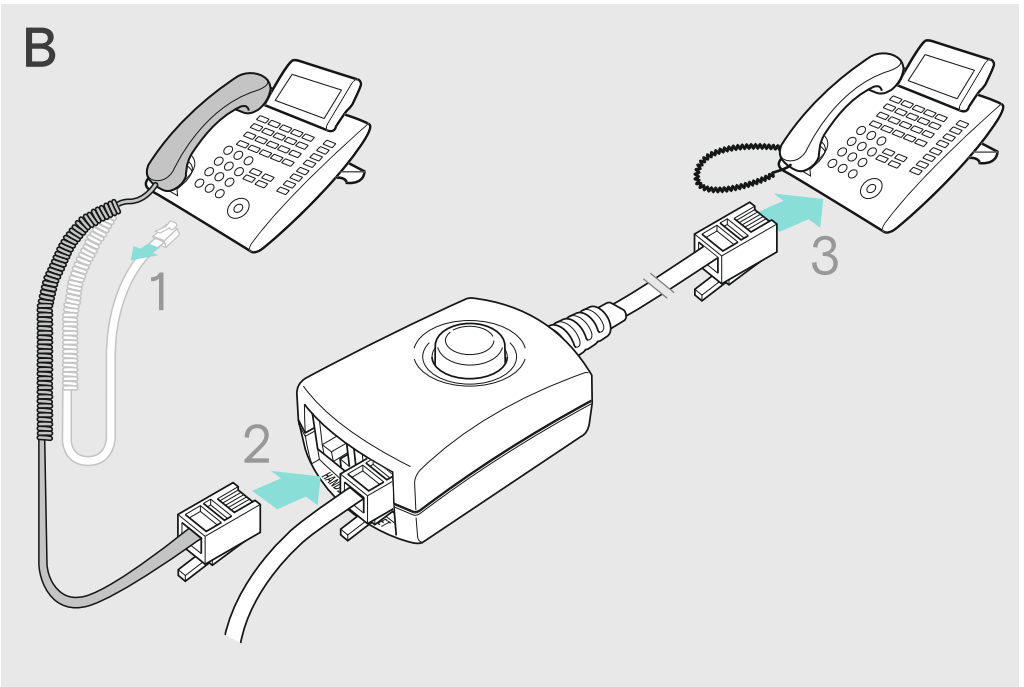


[www.eposaudio.com/support](http://www.eposaudio.com/support)



DSEA A/S

Kongebakken 9, DK-2765 Smørum, Denmark  
[www.eposaudio.com](http://www.eposaudio.com)



Switching between A and B | Zwischen A und B umschalten | Commutation entre A et B | Commutazione tra A e B | Conmutar entre A y B | Comutar entre A e B | Tussen A en B omschakelen | Εναλλαγή μεταξύ A & B | Skift mellem A og B | Växla mellan A och B | Vaihtaminen A ja B välillä | Przełączanie między A i B | Переключение между A и B | A和B之間切换 | 在A與B之間切换 | A ve B arasında geçiş | AとBの間の切り替え | Beralih antara A & B | A과 B 사이의 전환

