

EPOS



GTW 270

Wireless earbuds

Model: SCBT20

User Guide

Contents

Welcome	2
Package contents	3
GTW 270 at a glance.....	4
Earbuds at a glance	4
Charge case at a glance.....	5
How to connect to your devices	6
Pairing with a Bluetooth device.....	6
Using multi-point connectivity	7
Finding your fit.....	8
Changing the eartips	8
Positioning securely in your ears	8
How to use – the basics.....	9
Powering the earbuds on – auto connect	9
Powering the earbuds off.....	10
Handling audio.....	11
Handling calls.....	12
Switching between connections.....	13
Installing the EPOS Gaming Suite.....	14
Changing the voice prompts language	15
Updating the firmware.....	15
How to charge.....	16
Charging the earbuds.....	16
Charging the case.....	17
Good to know.....	18
Pair up to eight devices.....	18
Overview of the LED indications	18
If you leave the Bluetooth range.....	19
Multi-platform compatibility – Accessories.....	20
If a problem occurs	21
How to care for your earbuds	22
Cleaning the products.....	22
Cleaning the eartips.....	23
Specifications.....	24

Welcome

Immersive Audio, Everywhere You go

Escape the humdrum world and enjoy no-compromise audio playback with the compact GTW 270 wireless earbuds. Connect to your favorite mobile device with stable Bluetooth® 5.1 and lose yourself in the immersive audio.

The unique ergonomically shaped earbuds are soft and flexible to adjust to your ear and ensure a secure and comfortable fit with best-in-class acoustic seal. The closed acoustic design provides outstanding noise reduction that lets you tune out background noise, leaving you fully focused on your audio.

Dual microphones deliver acoustic clarity and the five hours of listening time in the earbuds is extended up to 20 hours with the included charge case. Let the Power of Audio™ break you free and give you true freedom.

Key benefits & features

Closed acoustic earbuds

Closed-back and in-ear for maximum noise reduction and maximum game focus

Dual microphone technology

Dual microphone design delivers acoustic clarity

Multi-function command button

A single button on the left earbud provides tactile and intuitive control, conveniently switching between devices and allowing play, pause, next track and phone controls.

IPX 5 water resistance

IPX 5 water resistance protects the earbuds from sweat and light rain

Portable charge case

Up to 20 hours of listening time: five on the earbuds plus 15 more with the case.

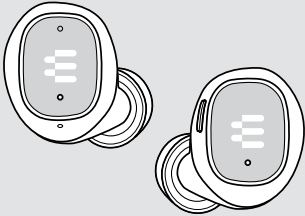
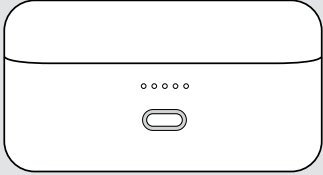
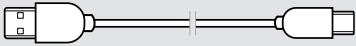


EPOS audio technology

Delivering audio excellence with noise isolating custom designed ear tips.



For safety instructions, consult the Safety Guide.

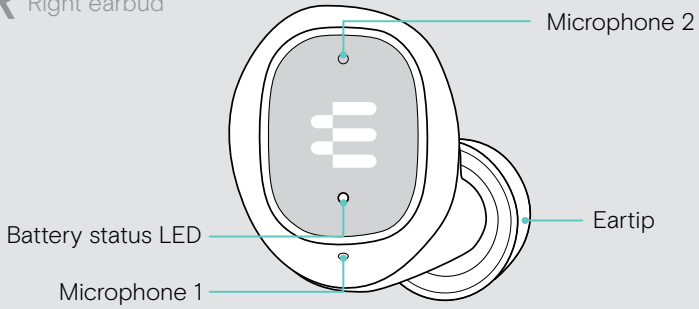
Package contents

	<p>GTW 270 earbuds L & R with built-in rechargeable battery</p>
	<p>On-the-go charge case with built-in rechargeable battery for earbuds</p>
	<p>USB-A to USB-C® charge cable</p>
	<p>Silicone eartips - XS, S, L (M pre-mounted)</p>
	<p>Quick Guide Safety Guide Compliance sheet</p>

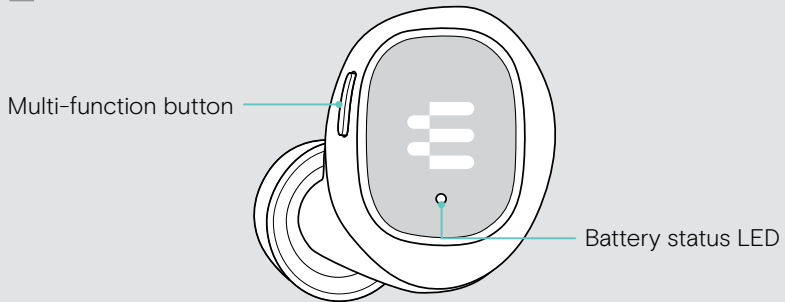
GTW 270 at a glance

Earbuds at a glance

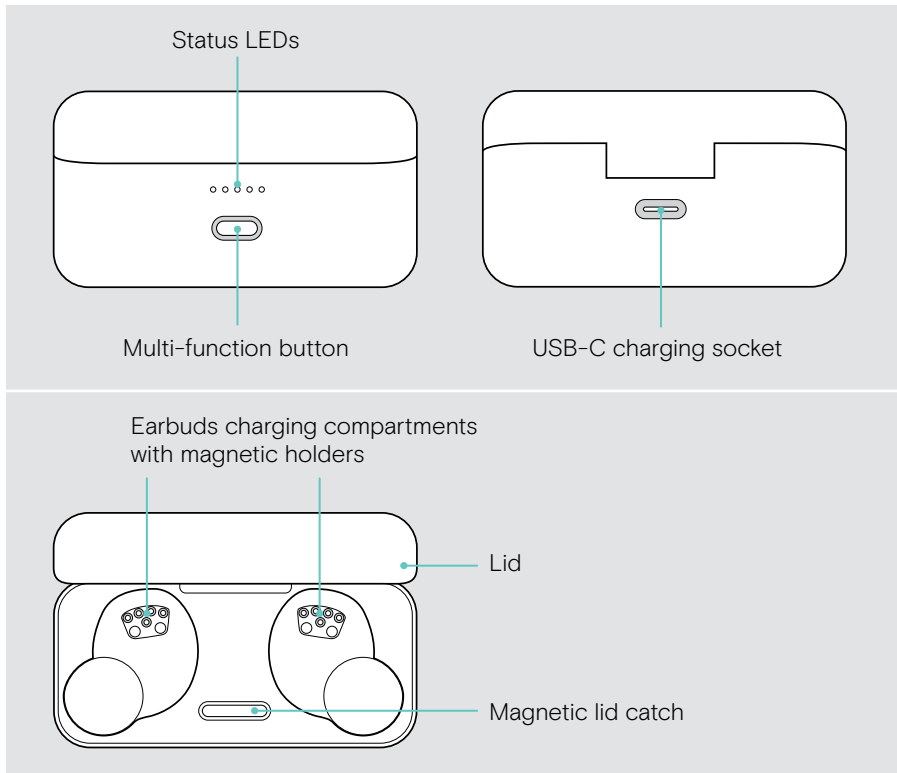
R Right earbud



L Left earbud



Charge case at a glance

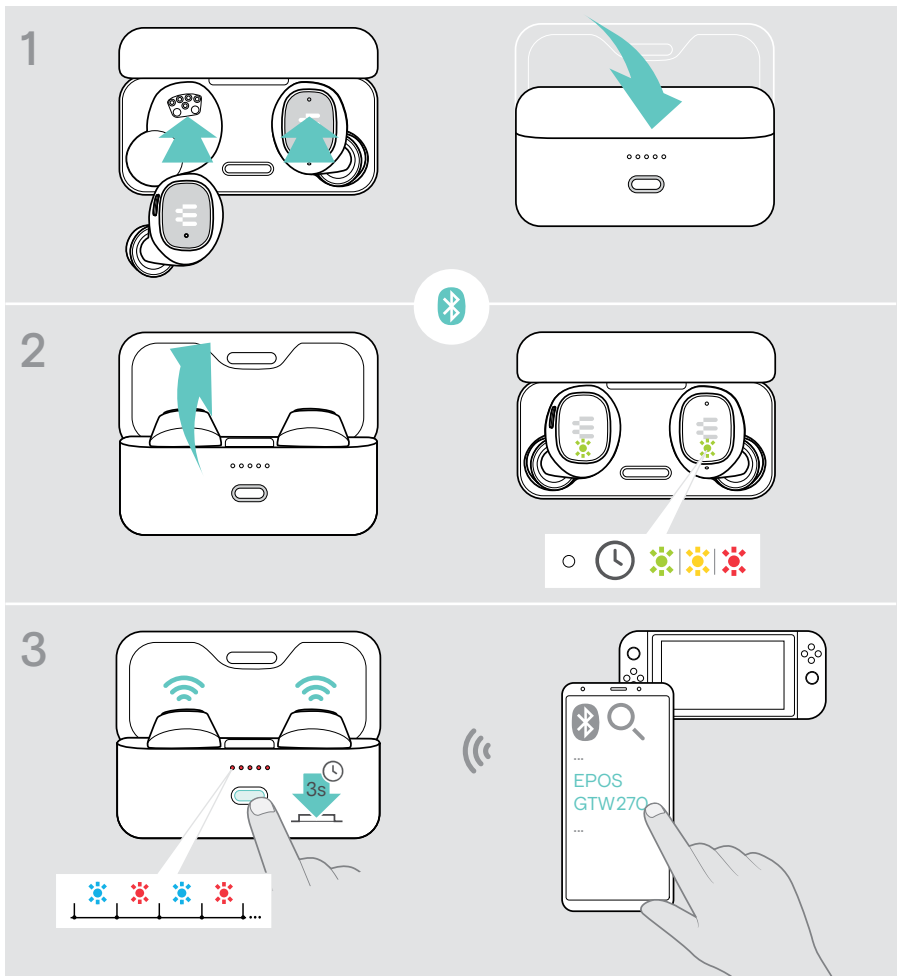


How to connect to your devices

You can pair up to eight devices with your GTW 270 – see page 18.

Pairing with a Bluetooth device

- 1 Dock both earbuds. Close the lid.
- 2 Open the lid. Wait until the earbud LEDs light up steadily.
- 3 Press and hold the charge case button to initiate pairing. Go into the Bluetooth settings of your device – search for Bluetooth devices – and select “EPOS GTW 270”.



Using multi-point connectivity

Using two devices with multi-point connectivity

Through multi-point connectivity you can be connected to two Bluetooth devices at the same time.



Connecting to one or two of the max. 8 paired devices

After powering on (see page 9) the GTW 270 will establish a connection to:

- one of your paired devices or
- two devices (multi-point connectivity). In this case, only one of the two devices can be used actively.

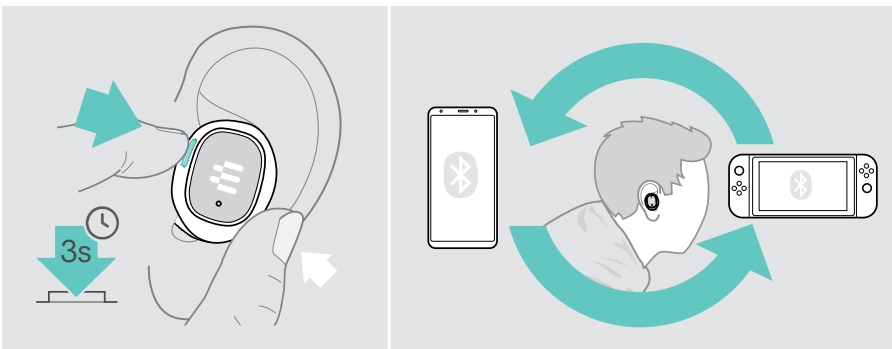


If this feature, is not available:

- > Update to the latest firmware via the EPOS Gaming Suite
– see page 15.

Switching between devices

Once using multi-point connectivity, you can switch between the two connected devices – see page 13 for more details.

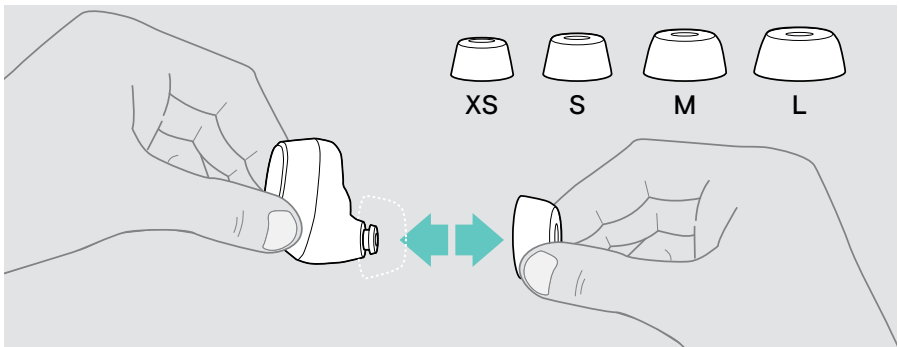


Finding your fit

Changing the eartips

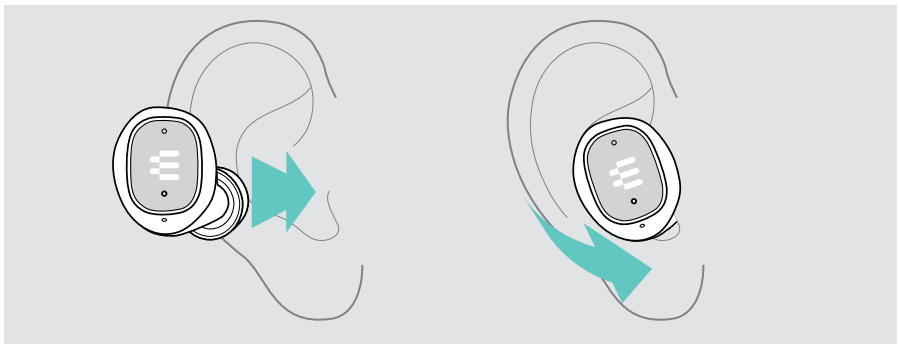
For the optimal audio experience and the most comfortable fit, try out each size of our custom-designed eartips. Check for your left and right ear separately as most people's ears are different in size. Overall, you should feel a good sealing without losing on comfort.

- > Select eartips of the correct size (XS, S, M or L) so that the earbud sits comfortably and securely in your ear.
- > Remove the eartip carefully.
- > Push the chosen eartip on the in-ear sound tunnel and ensure that it is firmly attached.



Positioning securely in your ears

- > Insert the earbuds into your ears.
- > Rotate to fit comfortably.



How to use – the basics



CAUTION

Risk of hearing damage!

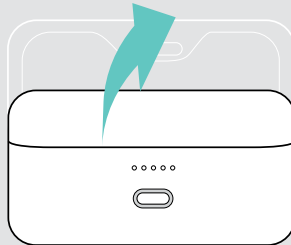
Listening at high volume levels for long periods can lead to permanent hearing defects.

- > Set the volume on your connected device to a low level before inserting the earbuds. Do not continuously expose yourself to high volumes.

Powering the earbuds on – auto connect

- 1 Open the lid to power on the earbuds. Activate Bluetooth on your device. Insert the earbuds into your ears.
- 2 The earbuds automatically try to connect to the nearest Bluetooth device – see page 18. You hear the voice prompt “Device connected”.

1



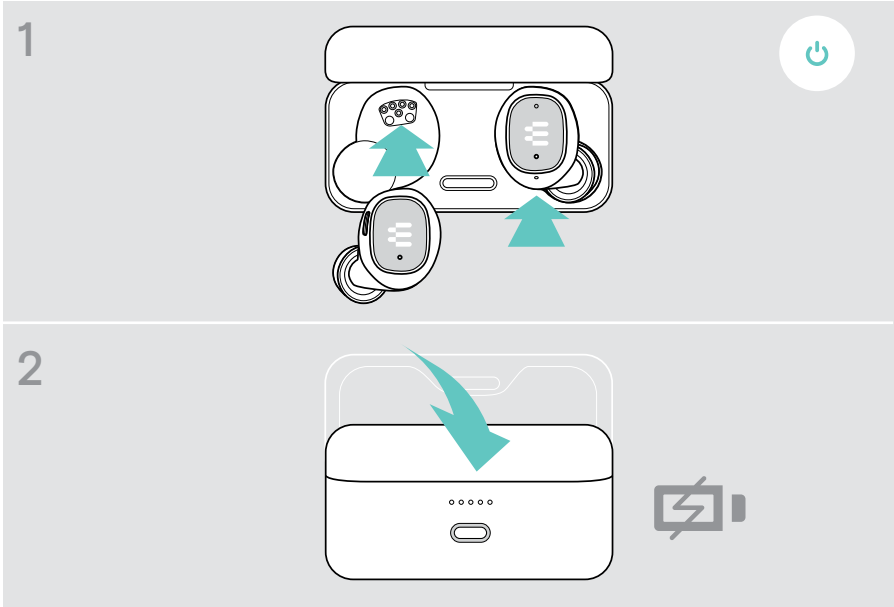
2



Powering the earbuds off

Your earbuds' true home is your charge case. They feel home and safe when docked into the case.

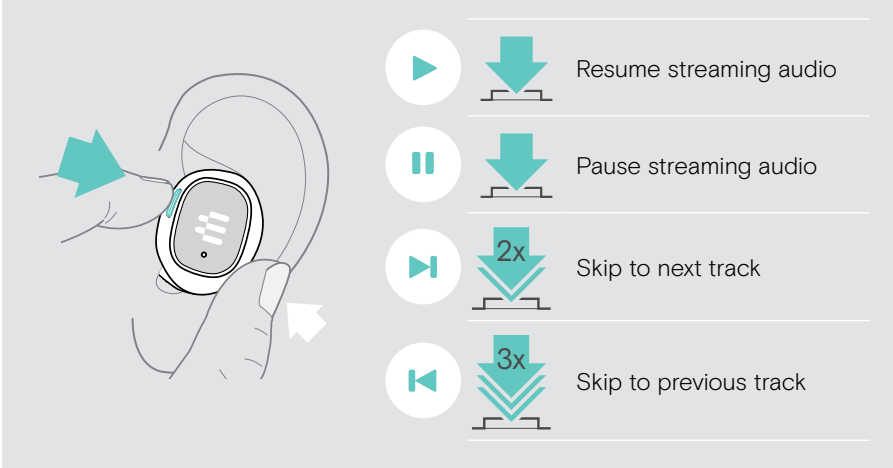
- 1 Dock both earbuds.
- 2 Close the lid to power off the earbuds and automatically charge them.
The battery is being charged – see page 16.











If you leave the earbuds on your desk and there is no audio signal, the earbuds will automatically turn off after 30 minutes.

Handling audio

> Press the button* to:



The diagram shows a hand holding a device with a button. A teal arrow points to the button, and a white arrow points to the device. To the right, a list of actions is shown with corresponding icons:

-   Resume streaming audio
-   Pause streaming audio
-   Skip to next track
-   Skip to previous track



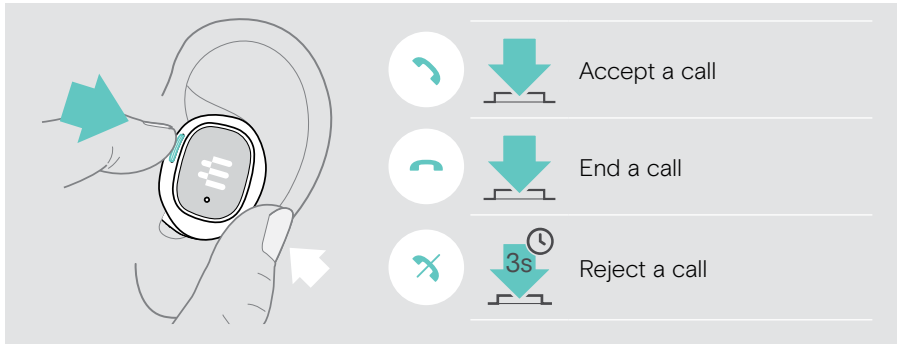
If you receive and accept a call, audio is paused and restarts after the call – if supported by the connected device.

*Functionality varies by application

Handling calls

To make a call: > Initiate it via your connected device.

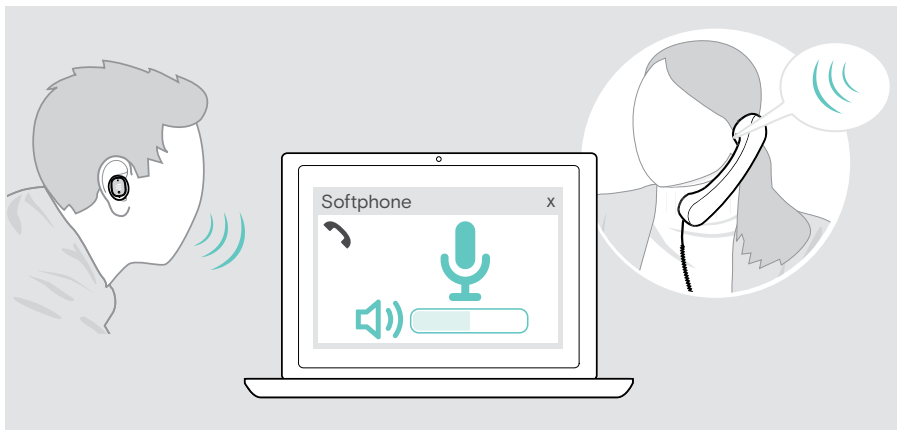
> Press the button* to:



*Functionality varies by application

Adjusting the microphone volume for softphones

- > Initiate a call on your connected device to someone who will help you find the correct volume setting for your microphone.
- > Change the microphone volume in your softphone application and/or in your PC audio application.



Switching between connections

Through multi-point connectivity you can be connected to two Bluetooth devices at the same time.

Automatic switch function

If you receive a call on your mobile while listening to music e. g. on your computer, you hear a knock-on tone. As soon as you accept the call, the computer sound is muted until you end the call. When you end the call, you will jump back to the soundtrack you were listening to on your computer.

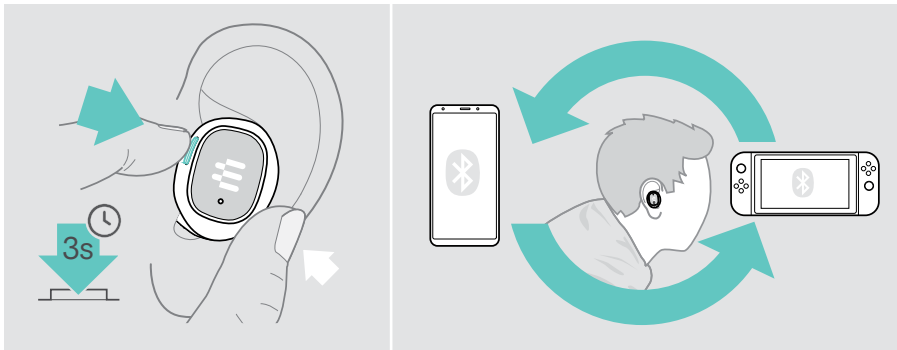


Manual switch function

With the manual switch function, you are able to choose from which connection you want to hear audio.

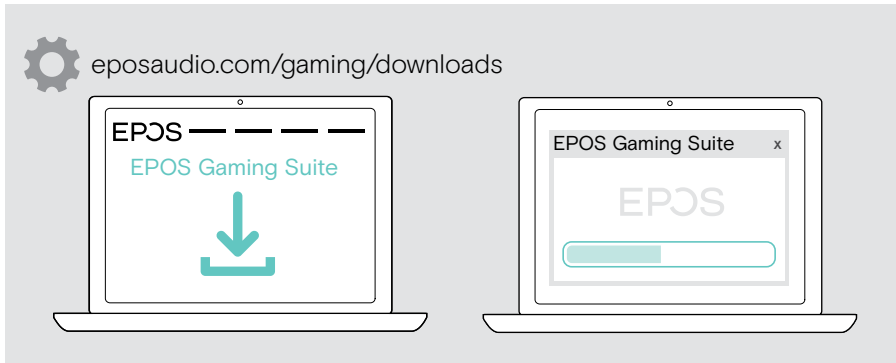
To switch between your connected devices:

- > Press and hold the multi-function button until you hear an activation sound.



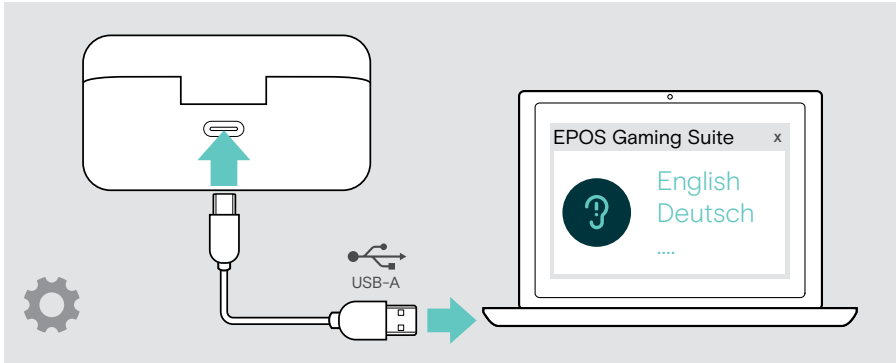
Installing the EPOS Gaming Suite

- > Download the software from eposaudio.com/gaming/downloads.
- > Install the software.



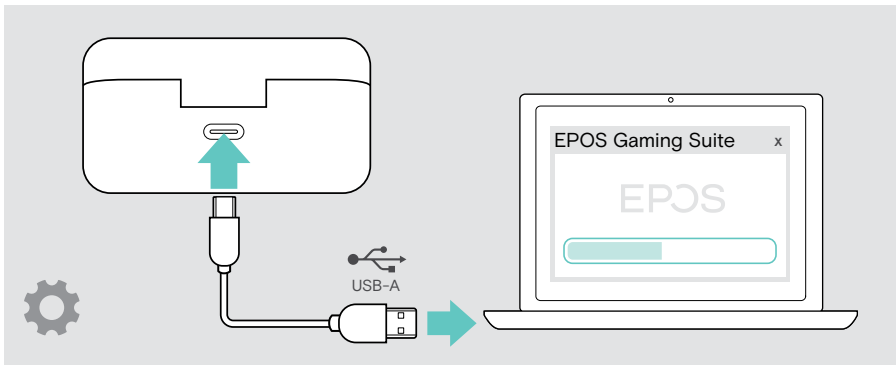
Changing the voice prompts language

- > Have both earbuds in the closed charge case.
- > Connect the USB cable to the charge case and your computer.
The LEDs light up.
- > Start the **EPOS Gaming Suite** and change the language in the settings.



Updating the firmware

- > Have both earbuds in the closed charge case.
- > Connect the USB cable to the charge case and your computer.
The LED lights up.
- > Start the **EPOS Gaming Suite**.
If there is a new firmware available the software will guide you through the update process.

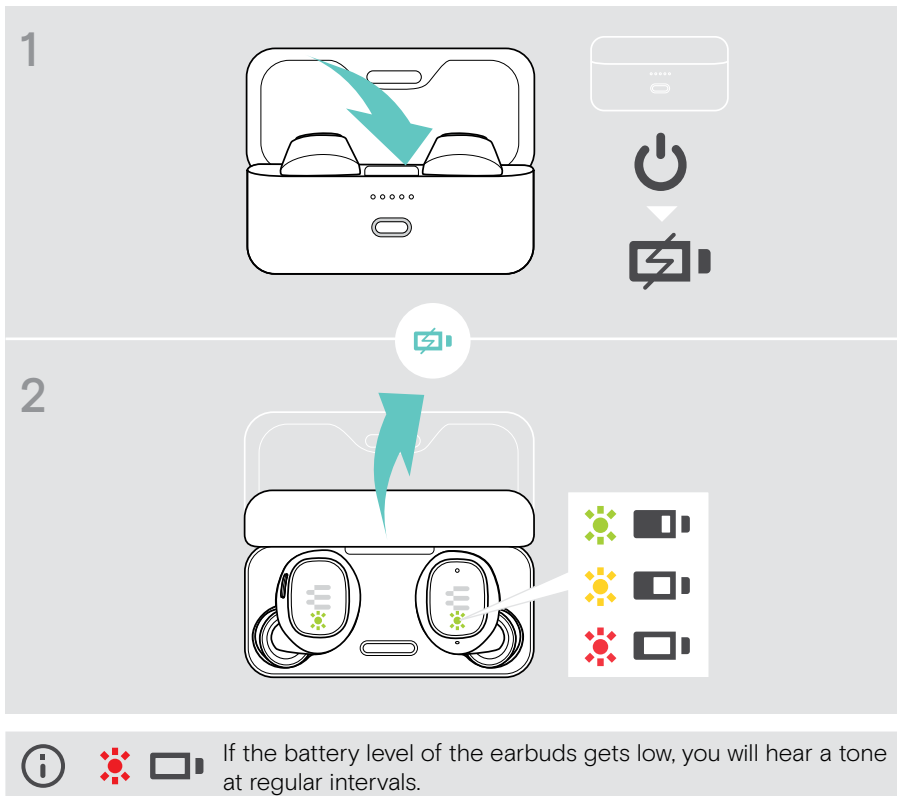


How to charge

The GTW 270 offers up to 20 hours of battery life. This includes 5 hours of battery in the earbuds plus 15 hours with the on-the-go charge case.

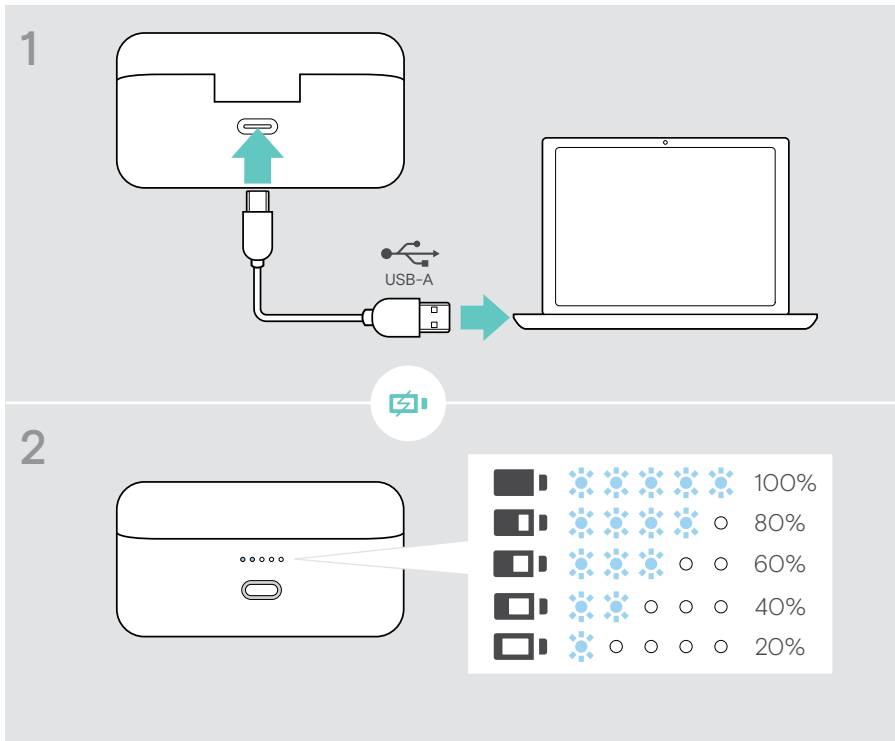
Charging the earbuds




- 1 Dock the earbuds in the charge case and close the lid.
The case LEDs pulse 3 times to show that the earbuds are powered off and charging in the case.
Full charge: 1 hour 30 minutes | Fast charge: 15 minutes for 1 hour use
- 2 Open the lid to check the earbuds charging status.
Both earbuds light up until they are connected to a device.



Charging the case

- 1 Plug the supplied charge cable to the charge case.
Connect the USB-A plug to your laptop or a certified wall power supply*.
You can charge the earbuds at the same time.
- 2 The LEDs light up to indicate the battery status.
Full charge: 1 hour 45 minutes for earbuds and charge case



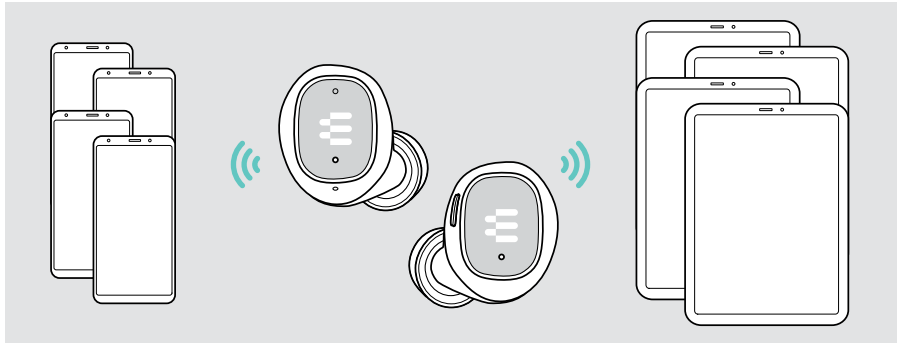
   If the battery level of the case gets low, the LEDs flash red.

*Only use a USB power supply with maximum 5 V \pm 0.25 V.


Good to know







Pair up to eight devices

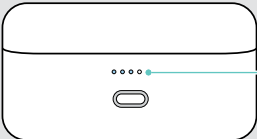
The GTW 270 can save up to eight paired devices. If you pair the GTW 270 with a ninth device, the device with the oldest activity will be overwritten. If you want to re-establish a connection with this device, you will need to pair it again.



















Overview of the LED indications



 	Battery level high
 	Battery level middle
 	Battery level low



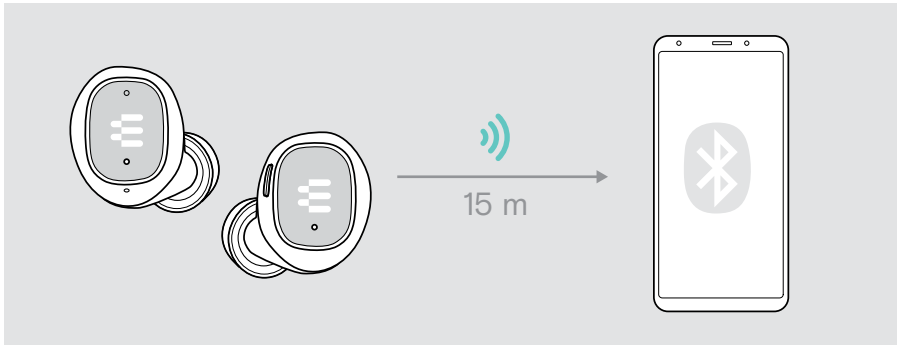
    	Battery is being charged
    	Battery level low
      ...	Pairing

If you leave the Bluetooth range

The range between the earbuds and the connected device is device dependent. The transmission range largely depends on environmental conditions such as wall thickness, wall composition etc. With a free line of sight, the Bluetooth transmission range is up to 15 meters.

If the audio quality gets worse or the link breaks down completely:

- > Re-enter the radio range of the Bluetooth device to re-connect.



After 30 minutes the earbuds will automatically turn off if there is no audio signal.

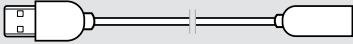
Multi-platform compatibility – Accessories



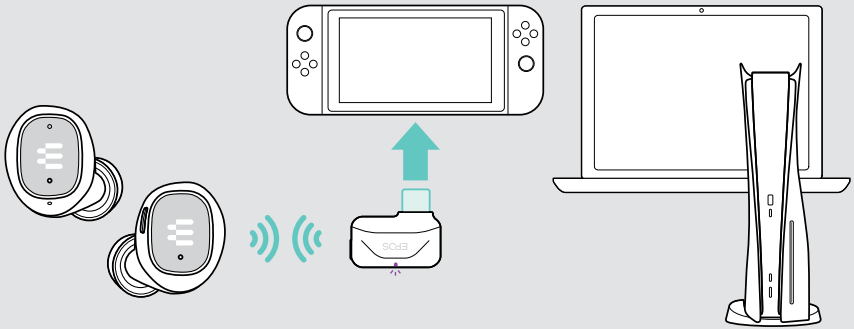
GSA 70 USB-C

Multi-compatibility through the USB-C low-latency dongle and Bluetooth®

You can connect the dongle e. g. to your PC, Nintendo Switch™, PS5™/PS4™ or Android™ device.



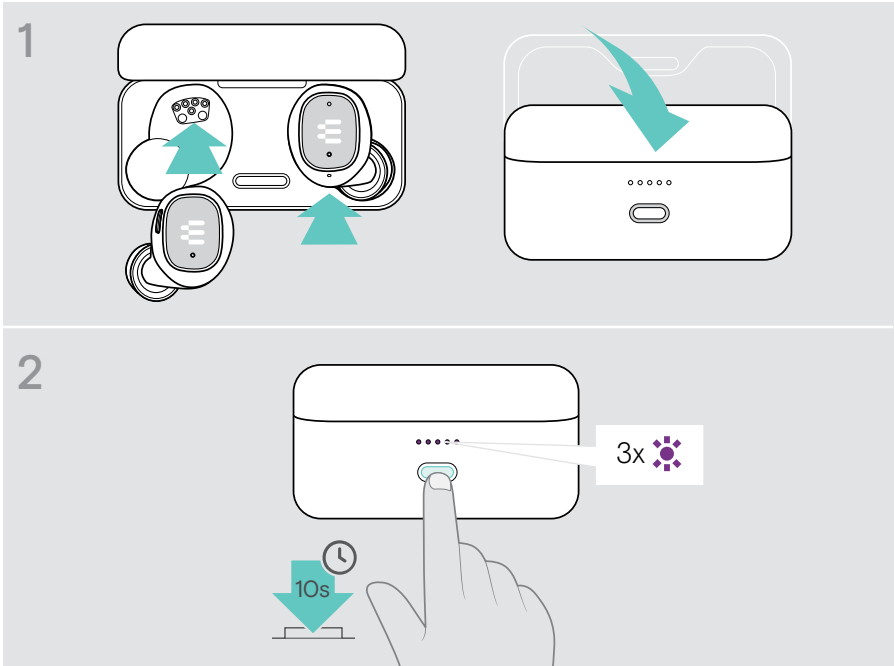
USB-C® to USB-A extension cable



If a problem occurs ...

Clearing the pairing list of the earbuds (Reset)

- 1 Dock the earbuds in the charge case and close the lid.
- 2 Press the button until the LEDs flash purple 3 times. The pairing list is cleared.
- 3 Follow the instructions on page 6 to pair to a new device.



How to care for your earbuds

- > Store your earbuds in the charge case to keep them best protected.
- > Avoid storing the earbuds in hot or cold environments, for example a closed car in summer, or in winter conditions to prevent a decrease in battery lifetime or capacity.

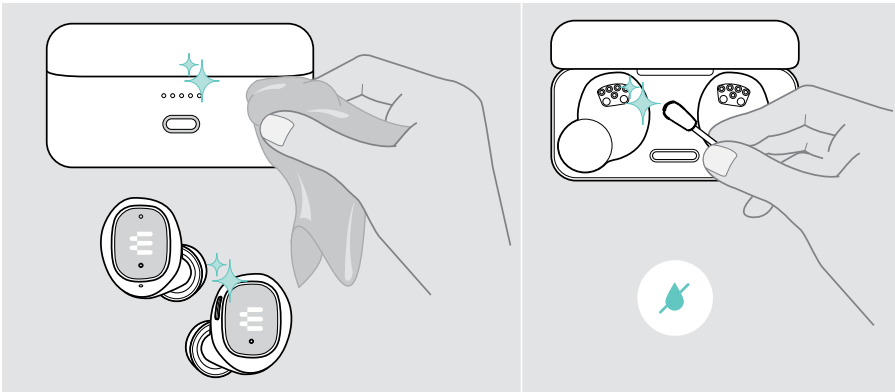
Cleaning the products

CAUTION

Liquids can damage the electronics of the product!

Liquids entering the housing of the device can cause a short circuit and damage the electronics.

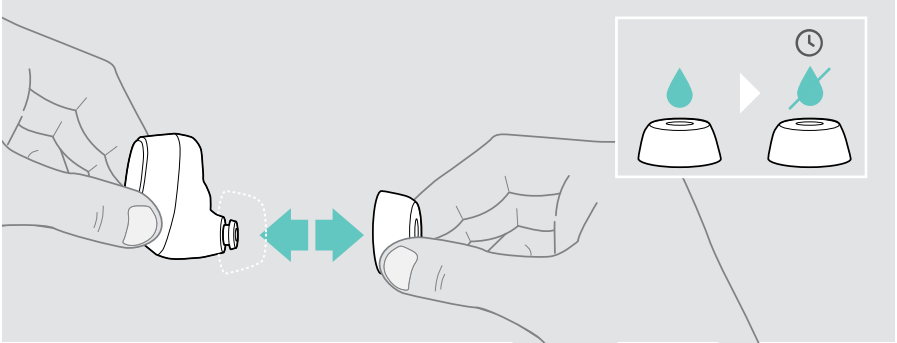
- > Keep all liquids far away from the product. Do not use any cleansing agents or solvents.
 - > Only use a dry cloth to clean the product.
 - > Clean the charging contacts of the case and the earbuds from time to time using e. g. a cotton swab.
-



Cleaning the eartips

For hygienic reasons, you should wash the eartips from time to time.

- > Remove the eartips carefully.
- > Wash the eartips with warm water or use a wet wipe and allow them to air dry.
- > Push the eartips on the in-ear sound tunnels.



Specifications

Earbuds

Ear coupling	In-ear
Transducer principle	Dynamic, closed
Dimensions (L x W x H)	23.8 x 23.2 x 23.7 mm / 0.94 x 0.91 x 0.93 in
Weight	Left: 6.1 g / 0.22 oz Right: 6.6 g / 0.23 oz
Noise cancellation	Passive
Connectivity	Bluetooth® 5.1
Charge cable	1.5 m USB-A to USB-C cable
Compatibility	Mobile / Tablet
Listening time	Up to 5 hours + 15 hours additional time via charge case (3 recharge cycles)
Charging time	1.5 hours
Rechargeable battery (built-in)	Lithium Polymer / 3.7 V DC / 60 mAh
Frequency response	Speaker: 20 – 20,000 Hz Microphone: 100 – 7,500 Hz
Transmission frequency	2402 – 2480 MHz
Range	Up to 15 m
Sound pressure level	100 dB
Pick-up pattern	Omnidirectional
Sensitivity	-22 dBV/Pa @ 1 kHz

Charge case

Dimensions (L x W x H)	67.5 x 33.2 x 36.2 mm / 2.66 x 1.31 x 1.43 in
Weight	62 g / 2.19 oz
Connection	USB-C
Charging time	1.75 hours
Rechargeable battery (built-in)	Lithium Polymer / 3.7 V DC / 500 mAh
Max. charging voltage via USB	5.25 V DC / max. current 500 mA

General

Temperature range	0 °C to +40 °C / +32 °F to +104 °F
Relative humidity	Operation: 10 to 80% Storage: 10 to 95%

Trademarks

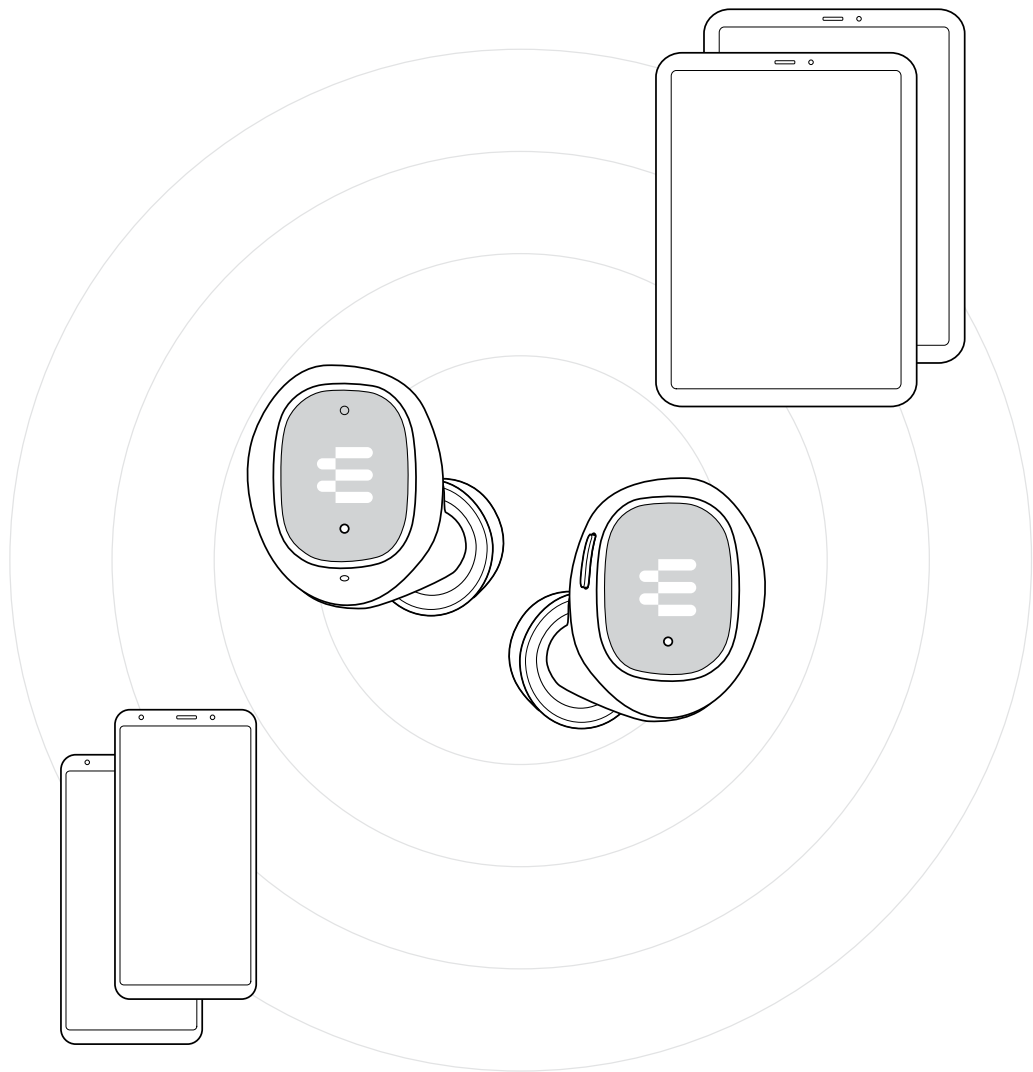
The Bluetooth® word mark and logos are registered trademarks owned by Bluetooth SIG, Inc. and any use of such marks by DSEA A/S is under license.

USB Type-C® and USB-C® are trademarks of USB Implementers Forum.

“PlayStation” is a registered trademark or trademark of Sony Interactive Entertainment Inc. also “PS4”/ “PS5” is a trademark of the same company.

All other trademarks are the property of their respective owners.

EPOS



DSEA A/S

Kongebakken 9, DK-2765 Smørum, Denmark

eposaudio.com

Publ. 10/22, A03