

EPOS



GTW 270 Hybrid

Wireless earbuds | Low-latency USB-C dongle

Model: SCBT20 | SCBT16

User Guide

Contents

Welcome	2
Package contents	3
GTW 270 at a glance.....	4
Earbuds at a glance	4
Charge case at a glance.....	5
Low-latency dongle at a glance.....	5
How to connect to your devices	6
Pairing with a Bluetooth device.....	6
Connecting the dongle.....	7
Using multi-point connectivity.....	8
Finding your fit.....	9
Changing the eartips	9
Positioning securely in your ears.....	9
How to use – the basics.....	10
Powering the earbuds on – auto connect	10
Powering the earbuds off.....	12
Handling audio.....	13
Handling calls.....	14
Switching between connections.....	15
Installing the EPOS Gaming Suite.....	16
Changing the voice prompt language.....	17
Updating the firmware.....	18
How to charge.....	19
Charging the earbuds.....	19
Charging the case.....	20
Good to know.....	21
Pair up to 8 devices	21
Overview of the LED indications	21
If you leave the Bluetooth or dongle's range.....	22
Using the dongle sleeve.....	22
Pairing with the dongle	23
If a problem occurs	24
How to care for your earbuds	26
Cleaning the products.....	26
Cleaning the eartips.....	27
Specifications.....	28

Welcome

True Wireless Earbuds. True Freedom.

Our EPOS GTW 270 Hybrid delivers multi-point connectivity for your optimal gaming experience.

Connect to your PC or your favorite USB-C device with the dongle at home and get low-latency, full audio gaming experience.

Designed for versatility, the GTW 270 Hybrid wireless earbuds allow you to switch seamlessly between gaming and never missing a call.

Also, satisfying your on-the-go needs, using Bluetooth® for streaming, gaming, podcasts, and calls to give you true freedom.

The earbuds have a unique ergonomic shape that is soft and flexible and naturally adjusts to your ear and creates a comfortable acoustic seal.

Key features

True wireless low-latency gaming

All-round gaming true wireless earbuds by EPOS; featuring low-latency audio on all gaming platforms. Designed for the gamer seeking no-compromise audio experience.

Multi-function command button

A single button on the left earbud provides tactile and intuitive control, conveniently switching between devices and allowing play, pause, next track and phone controls.

Compact design and ergonomic shape

The special lightweight, ergonomic shape of the earbuds adjusts to your ear to ensure a secure and comfortable in-ear fit.

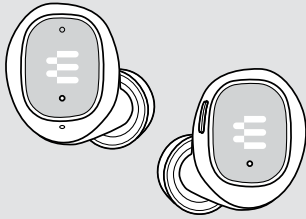
Closed acoustic earbuds

The unique design of the in-ear earbuds creates an optimal acoustic seal while the closed acoustic design delivers maximum noise reduction and maximum game focus.

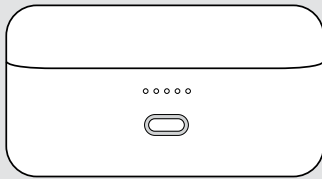


For safety instructions, consult the Safety Guide.

Package contents



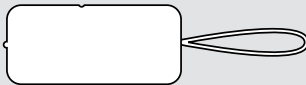
GTW 270 earbuds L & R
with built-in rechargeable battery



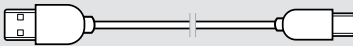
On-the-go charge case
with built-in rechargeable battery
for earbuds



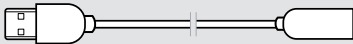
GSA 70 USB-C
Low-latency dongle



Dongle sleeve



USB-A to USB-C® charge cable



USB-C® to USB-A extension cable



Silicone eartips - XS, S, L
(M pre-mounted)

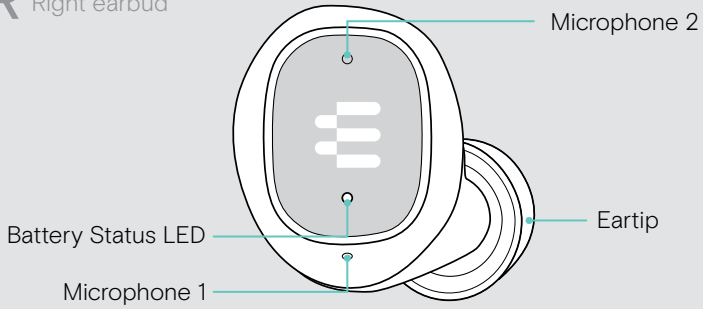


Quick Guide
Safety Guide
Compliance sheet

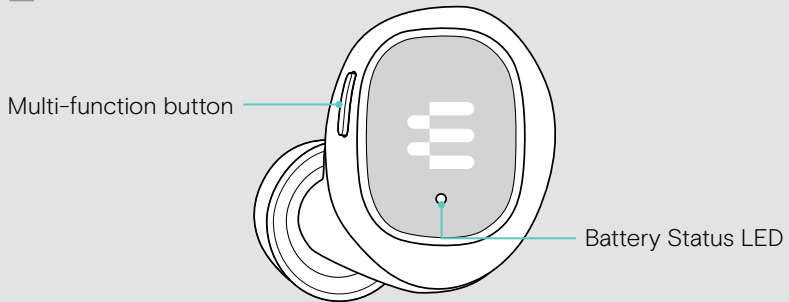
GTW 270 at a glance

Earbuds at a glance

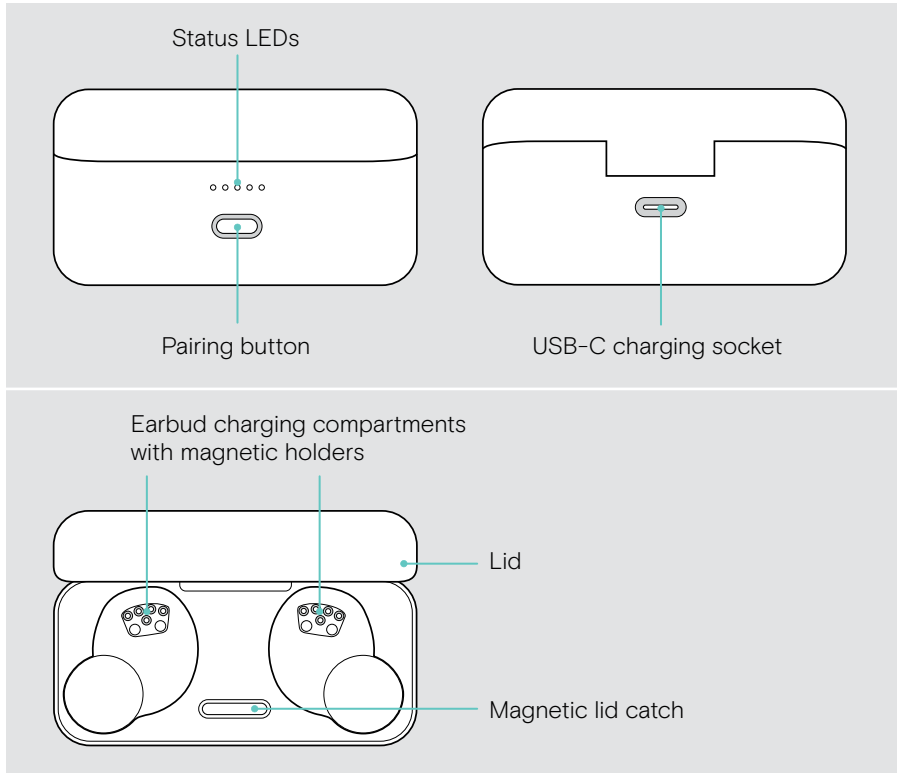
R Right earbud



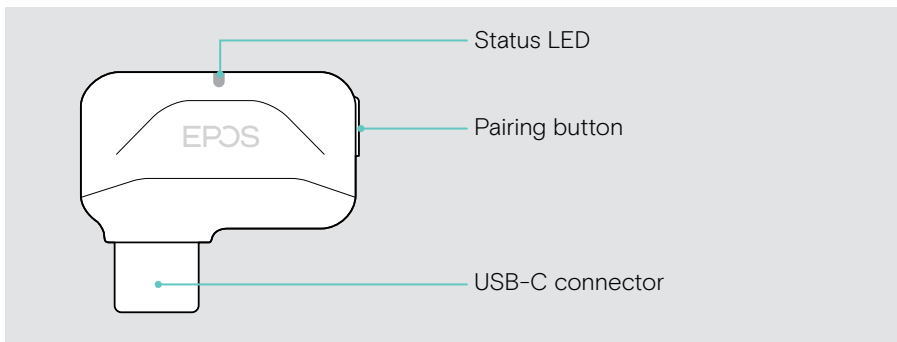
L Left earbud



Charge case at a glance



Low-latency dongle at a glance

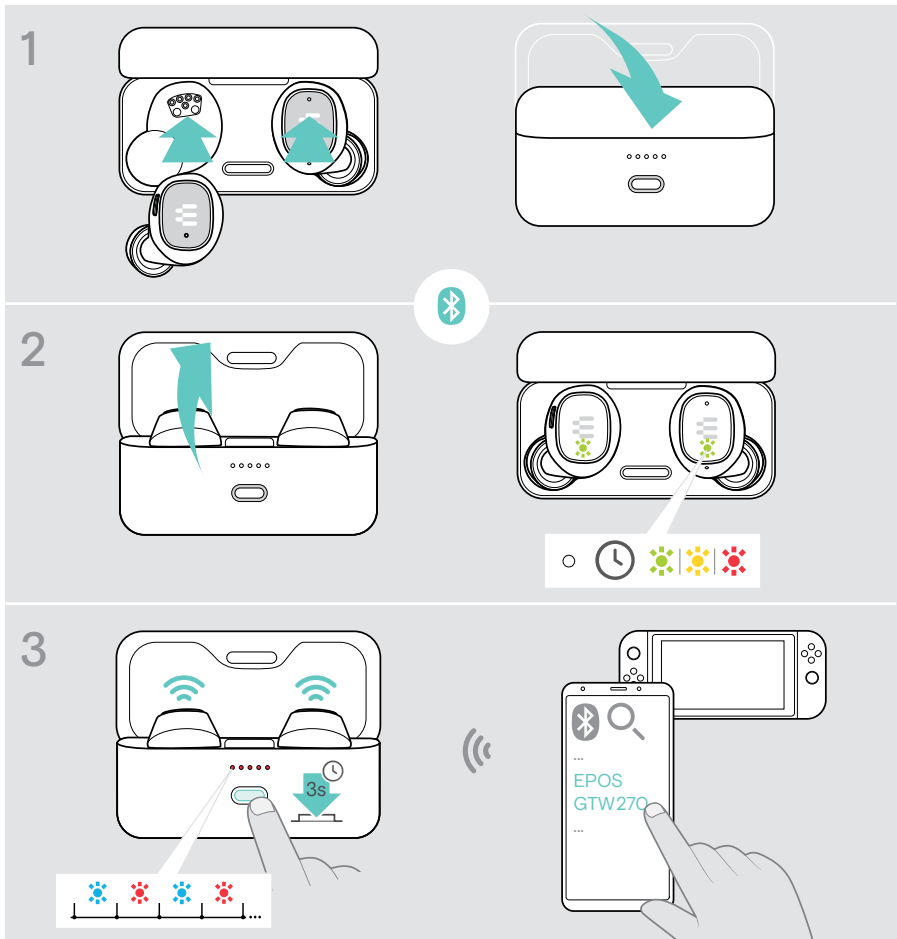


How to connect to your devices

You can connect your GTW 270 with your Bluetooth device or via the low-latency dongle. You can pair up to eight devices with your GTW 270 – see page 21.

Pairing with a Bluetooth device

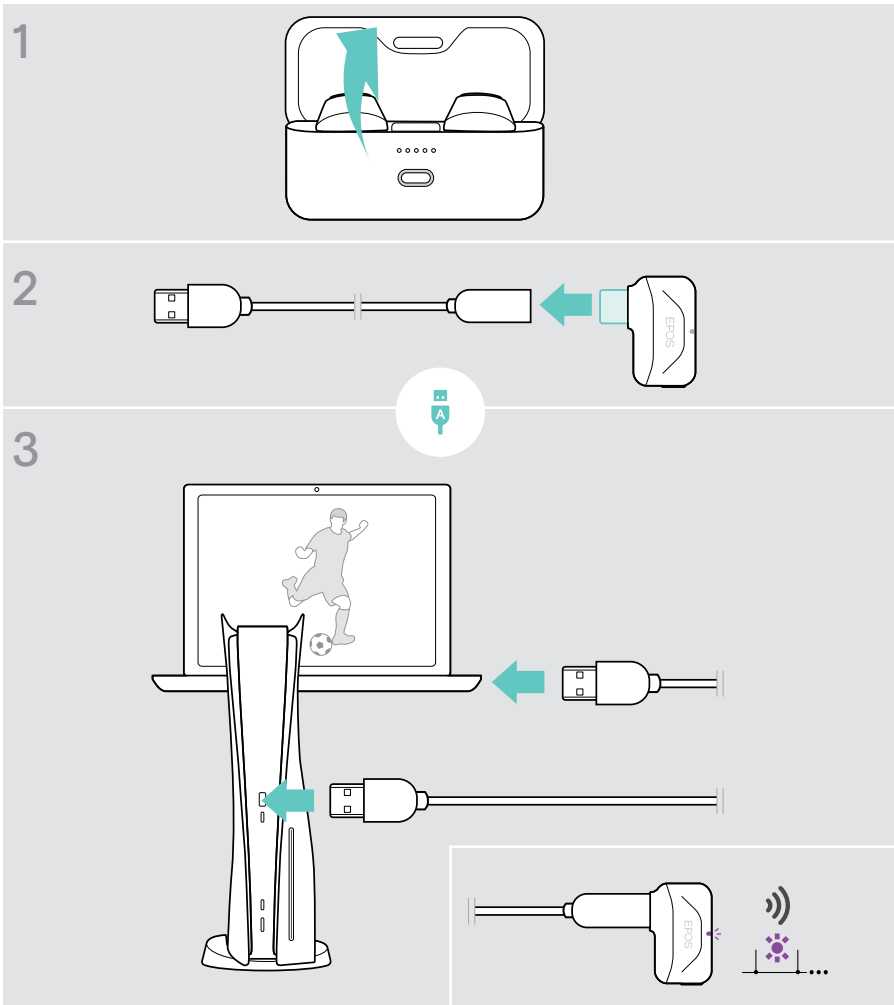
- 1 Dock both earbuds. Close the lid.
- 2 Open the lid. Wait until the earbud LEDs light up steadily.
- 3 Press and hold the charge case button to initiate pairing. Go into the Bluetooth settings of your device – search for Bluetooth devices – and select “EPOS GTW 270”.



Connecting the dongle

You can connect the dongle e. g. to your PC, PS4™ or PS5™ device. **Out of the box the dongle is already paired with the earbuds.**

- 1 Open the lid to power on the earbuds. Switch on your device.
- 2 Connect the dongle to the extension cable for higher signal stability.
- 3 Connect the cable to the **USB-A** port of your gaming platform of choice.
The dongle LED lights up purple once connected to your earbuds. This might take a while when connected the first time.



Using multi-point connectivity

Using two devices with multi-point connectivity

Through multi-point connectivity you can be connected to 2 devices at the same time: one device via Bluetooth and your preferred gaming device via the low-latency dongle. It is also possible to connect to two devices via Bluetooth.



Connecting to one or two of the max. 8 paired devices

After powering on (see page 10) the GTW 270 will establish a connection to:

- one of your paired devices or
- two devices (multi-point connectivity).

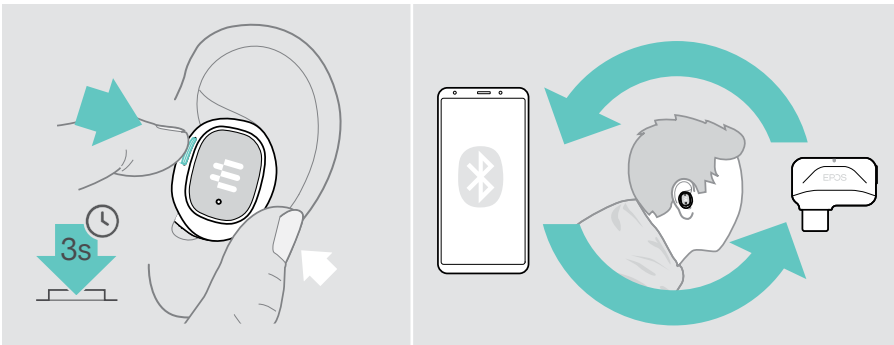
You can have a Bluetooth device and the low-latency dongle or two Bluetooth devices connected. **Only one of the two devices could be used actively.**



If this feature, is not available: Update to the latest firmware via the EPOS Gaming Suite – see page 18.

Switching between devices

Once using multi-point connectivity, you can switch between the two connected devices – see page 15 for more details.

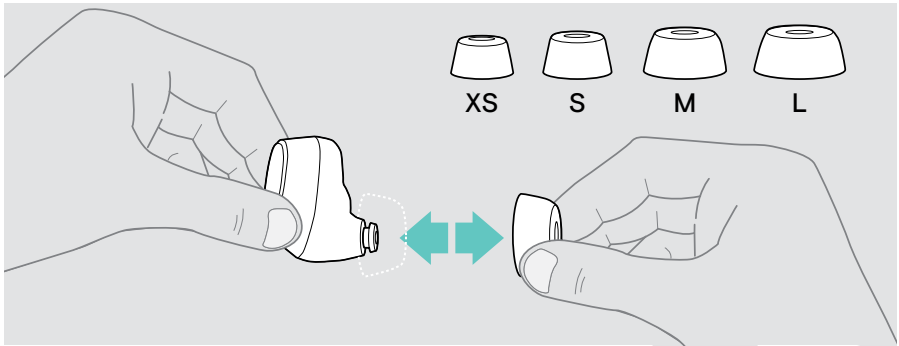


Finding your fit

Changing the eartips

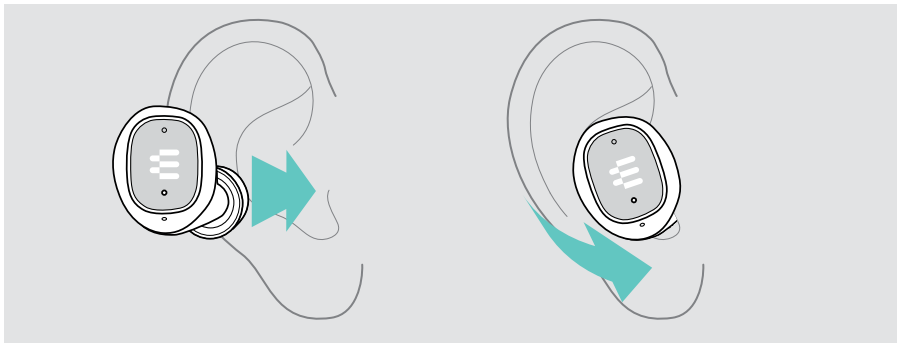
For the optimal audio experience and the most comfortable fit, try out each size of our custom-designed eartips. Check for your left and right ear separately as most people's ears are different in size. Overall, you should feel a good seal without loss of comfort.

- > Select eartips of the correct size (XS, S, M or L) so that the earbud sits comfortably and securely in your ear.
- > Remove the eartip carefully.
- > Push the chosen eartip on the in-ear sound tunnel and ensure that it is firmly attached.



Positioning securely in your ears

- > Insert the earbuds into your ears.
- > Rotate to fit comfortably.



How to use – the basics



CAUTION

Risk of hearing damage!

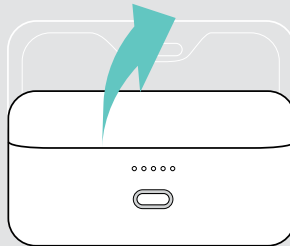
Listening at high volume levels for long periods can lead to permanent hearing defects.

- > Set the volume on your connected device to a low level before inserting the earbuds.
- > Do not continuously expose yourself to high volumes.

Powering the earbuds on – auto connect

- 1 Open the lid to power on the earbuds.
- 2 Activate Bluetooth on your device. Insert the earbuds into your ears. The earbuds automatically try to connect to the nearest Bluetooth device - see next chapter. You hear the voice prompt “Device connected”.

1

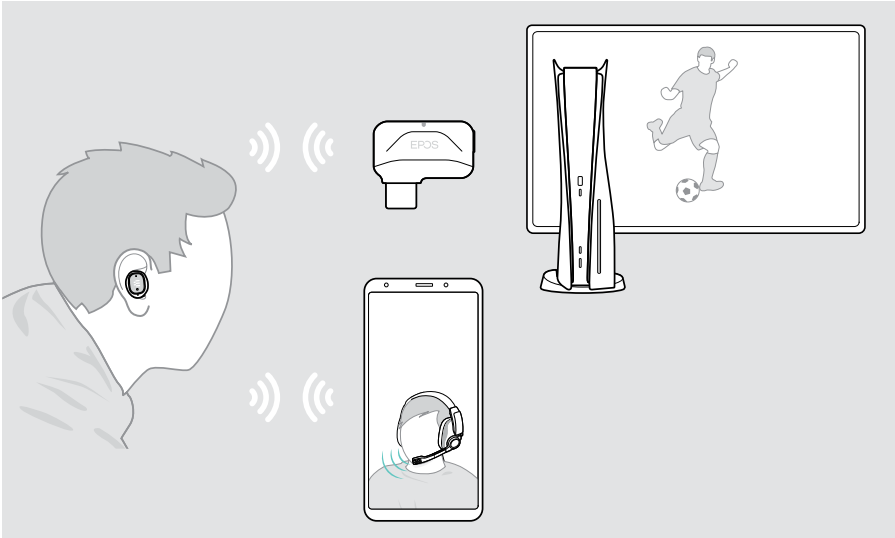


2



Automatic wireless connection

On powering up, the GTW 270 automatically tries to connect to the last two devices you used it with. Once the connection is successfully established, you hear the voice prompt “Dongle connected” / “Device connected”.



If the GTW 270 does not find a paired device to connect to, it automatically switches off after 30 minutes.

If the connection to two devices does not work:

> Update to the latest firmware – see page 18.

Connecting wireless devices manually

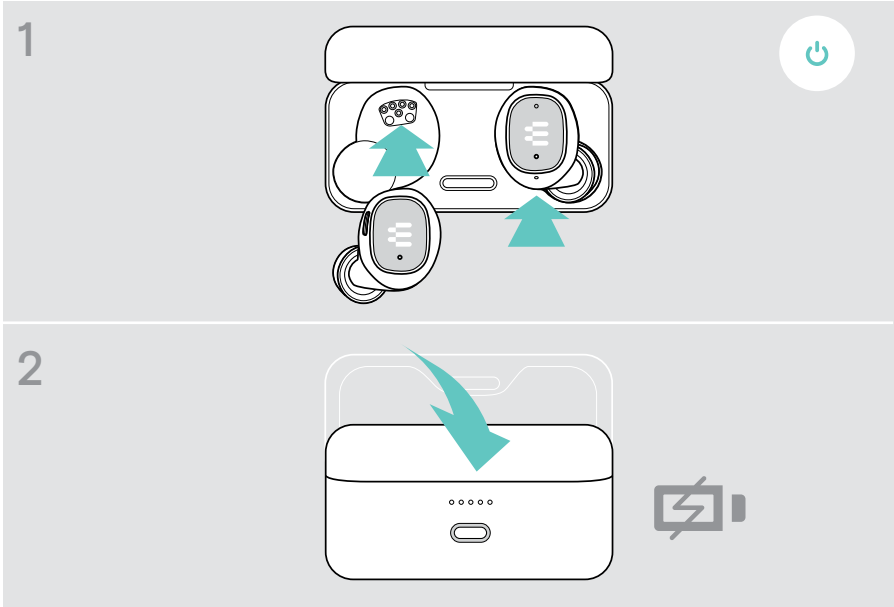
After a while the automatic search ends. If you want to connect to your dongle or Bluetooth device after the automatic search has ended, you need to connect manually:

- > Connect to **EPOS GTW 270** manually via your Bluetooth device.
- or
- Power the GTW 270 off and on (see page 10 and 12).

Powering the earbuds off

Your earbuds' true home is your charge case. They feel home and safe when docked into the case.

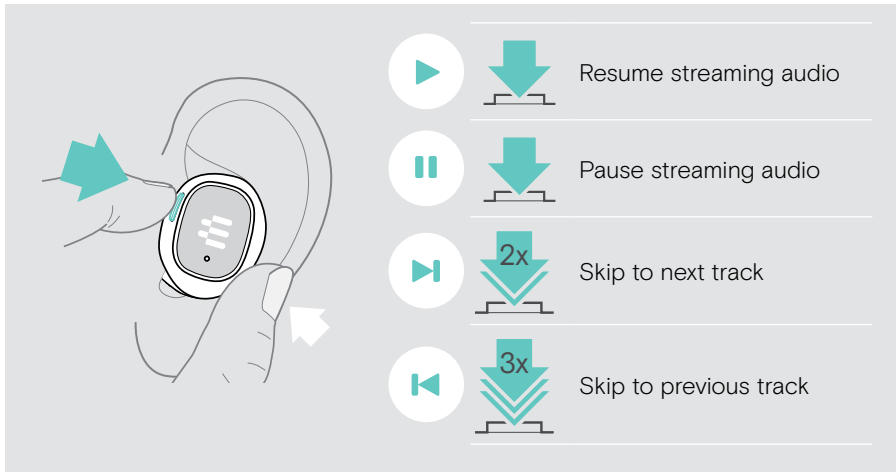
- 1 Dock both earbuds.
- 2 Close the lid to power off the earbuds and automatically charge them.
The battery is being charged – see page 19.











If you leave the earbuds on your desk and there is no audio signal, the earbuds will automatically turn off after 30 minutes.

Handling audio

> Press the button* to:



The diagram shows a hand holding a device with a button. A teal arrow points to the button, and a white arrow points to the device. To the right, a list of actions is shown with corresponding icons:

-   Resume streaming audio
-   Pause streaming audio
-   Skip to next track
-   Skip to previous track



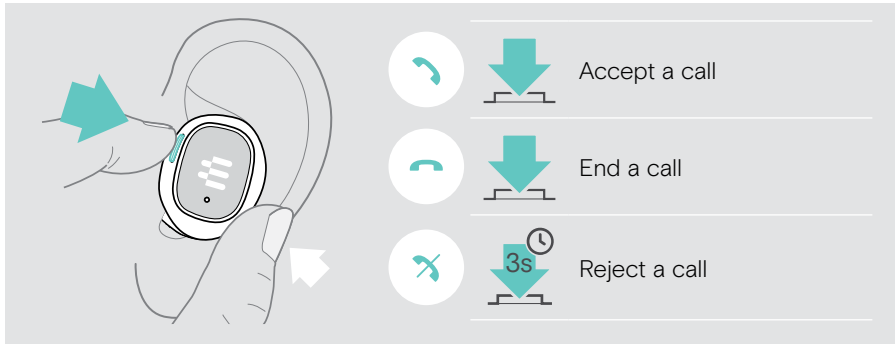
If you receive and accept a call, audio is paused and restarts after the call – if supported by the connected device.

*Functionality varies by application

Handling calls

To make a call: > Initiate it via your connected device.

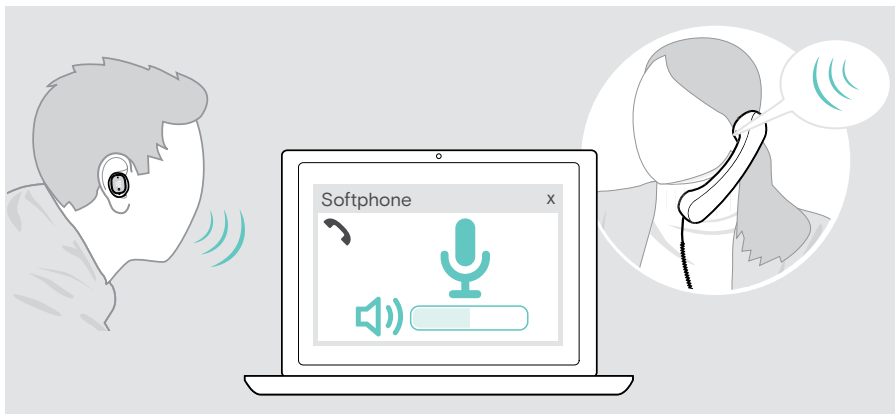
> Press the button* to:



*Functionality varies by application

Adjusting the microphone volume for softphones

- > Initiate a call on your connected device to someone who will help you find the correct volume setting for your microphone.
- > Change the microphone volume in your softphone application and/or in your PC audio application.



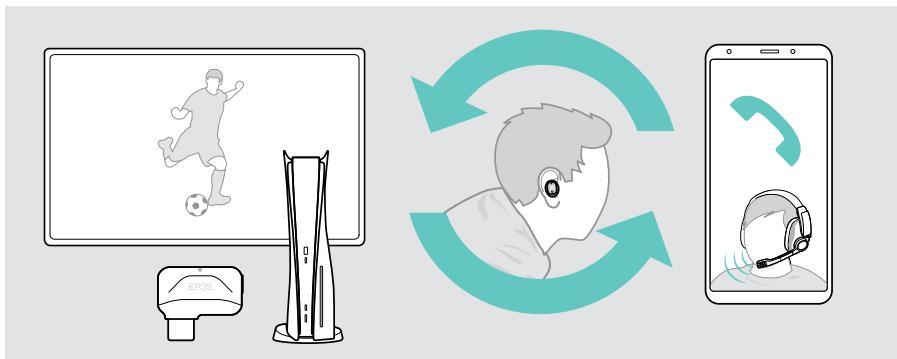
Switching between connections

Through multi-point connectivity you can be connected to two devices at the same time:

- **A** a Bluetooth device and your preferred gaming device via the low-latency dongle or
- **B** two Bluetooth devices.

Automatic switch function

If you receive a call on your mobile while gaming e.g. on your PS5, you hear a knock-on tone. As soon as you accept the call, the PS5 sound is muted until you end the call. When you end the call, you will jump back into your PS5 game.

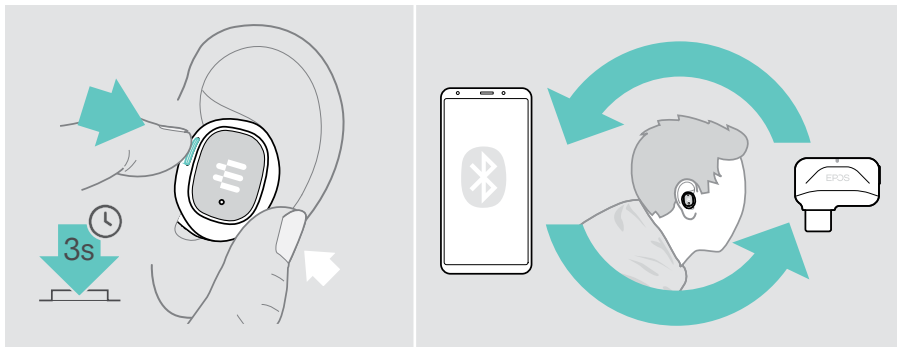


Manual switch function

With the manual switch function, you are able to choose from which connection you want to hear audio.

To switch between your connected devices:

- > Press and hold the multi-function button until you hear an activation sound.



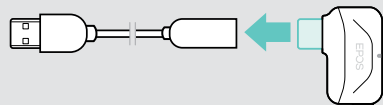
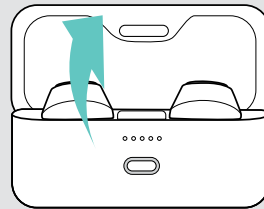
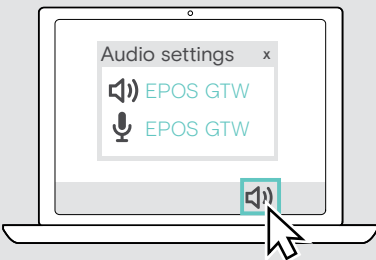
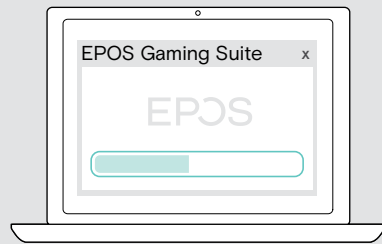
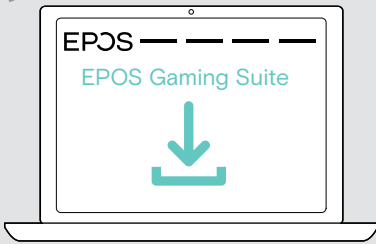
Installing the EPOS Gaming Suite

The free software **EPOS Gaming Suite** allows you to add value to your GTW 270 Hybrid.

- > Download the software from eposaudio.com/gaming/downloads and unzip the folder.
- > Initiate installation process and restart your PC when prompted.
- > Connect the dongle to your GTW 270 (see page 7).
- > Double-check your Windows settings and if needed make sure your EPOS GTW 270 Dongle is set as Output and Input device.



eposaudio.com/gaming/downloads

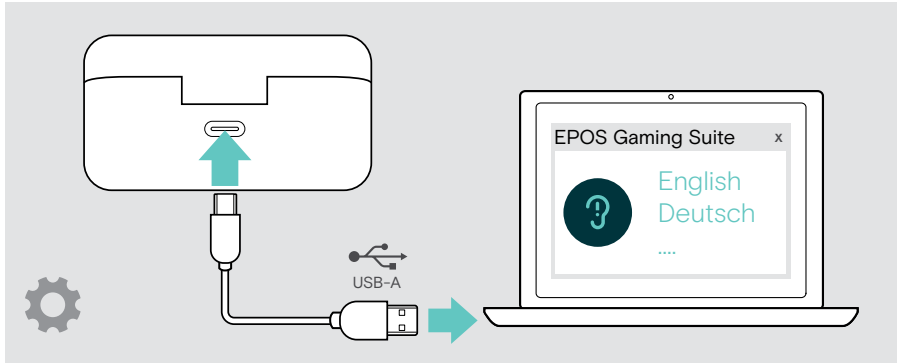


While using the dongle:

Through the EPOS Gaming Suite the earbuds will get more features unlocked, and deliver cutting edge audio performance.

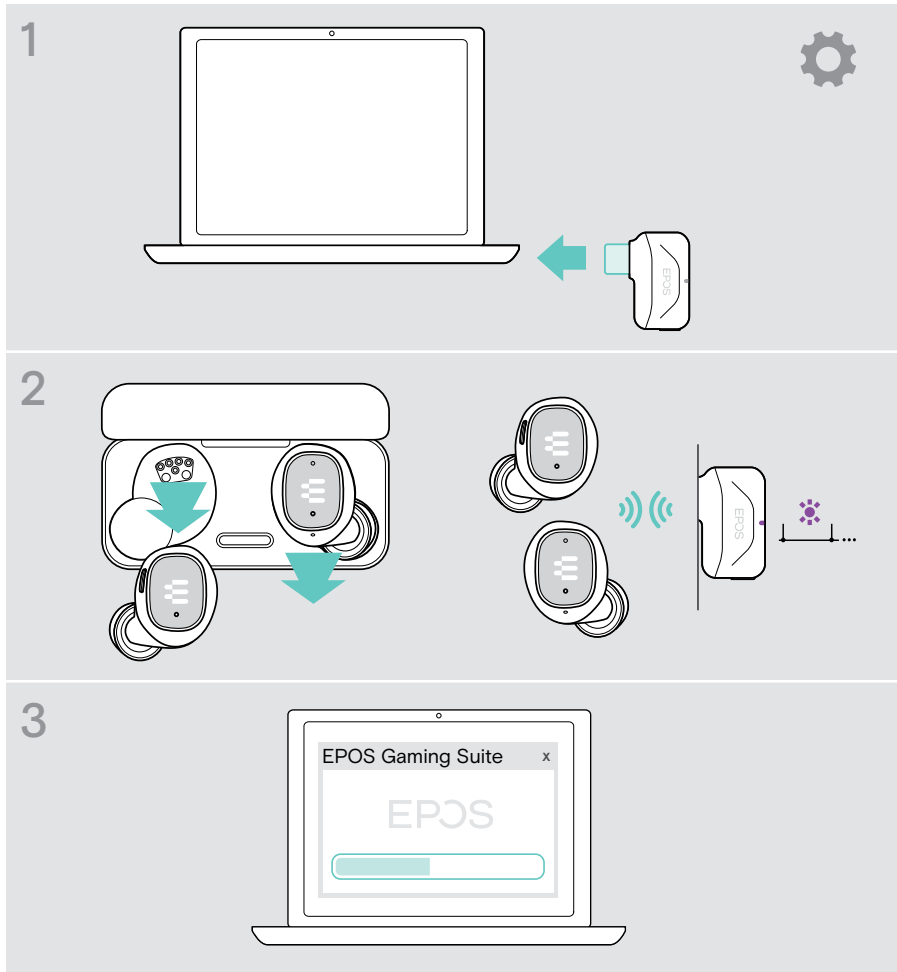
Changing the voice prompt language

- > Make sure both earbuds are in the closed charge case.
- > Connect the USB cable to the charge case and your computer.
The LEDs light up.
- > Start the **EPOS Gaming Suite** and change the language in the settings.



Updating the firmware

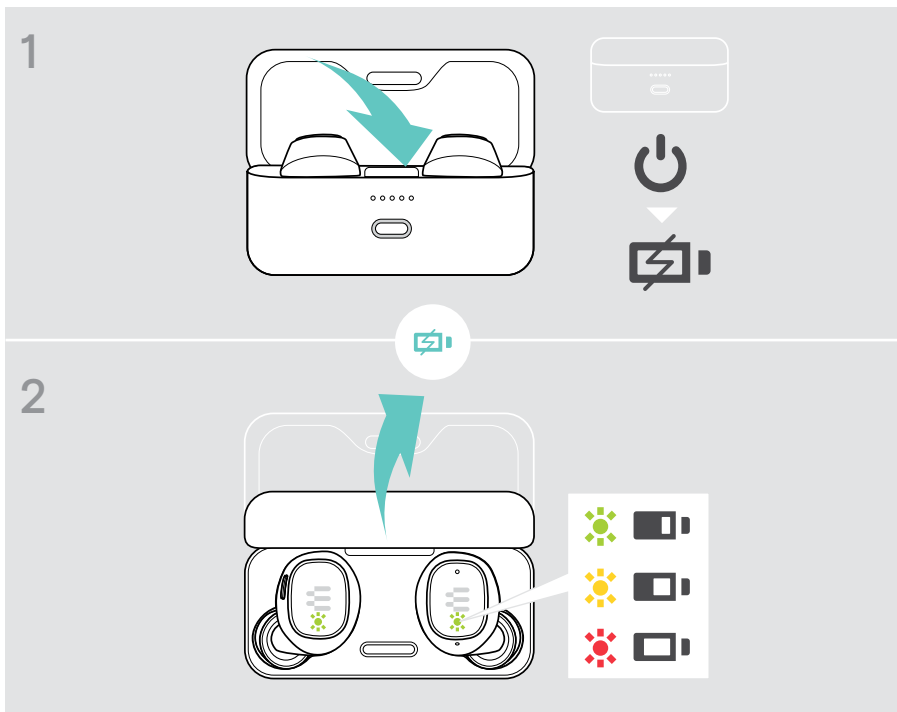
- 1 Insert the dongle into your PC.
- 2 Take the earbuds out of the charging case and wait until they connect to the dongle. The dongle LED lights up purple.
- 3 Start the [EPOS Gaming Suite](#).
If there is new firmware available, the software will guide you through the update process.



How to charge

Charging the earbuds

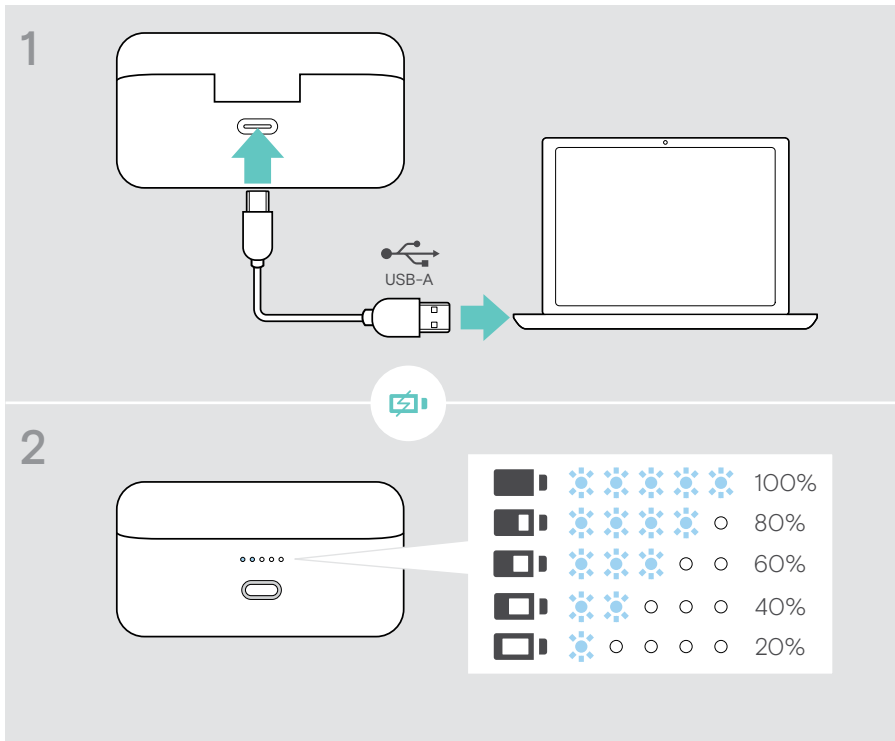
- 1 Dock the earbuds in the charge case and close the lid.
The case LEDs pulse 3 times to show that the earbuds are powered off and charging in the case.
Full charge: 1 hour 30 minutes | Fast charge: 15 minutes for 1 hour use
- 2 Open the lid to check the earbuds' charging status.
Both earbuds light up until they are connected to a device.






If the battery level of the earbuds gets low, you will hear a tone at regular intervals.

Charging the case

- 1 Plug the supplied charge cable to the charge case.
Connect the USB-A plug to your laptop or a certified wall power supply*.
You can charge the earbuds at the same time.
- 2 The LEDs light up to indicate the battery status.
Full charge: 1 hour 45 minutes for earbuds and charge case



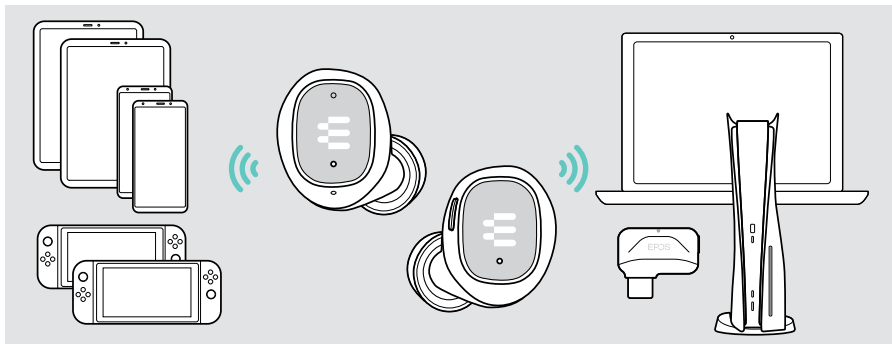
   If the battery level of the case gets low, the LEDs flash red.

*Only use a USB power supply with maximum 5 V \pm 0.25 V.

Good to know

Pair up to 8 devices

Your GTW 270 can save up to eight paired devices. If you pair the GTW 270 with a ninth device, the device with the oldest activity will be overwritten. If you want to re-establish a connection with this device, you will need to pair it again.



Overview of the LED indications

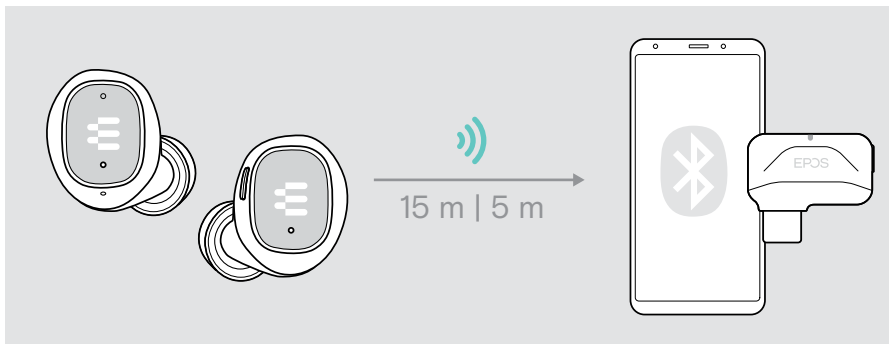
	Battery level high
	Battery level middle
	Battery level low
	Battery is being charged
	Battery level low
	Pairing
	Searching for earbuds
	Connected to earbuds
	Pairing

If you leave the Bluetooth or dongle's range

The range between the earbuds and the connected device is device dependent. The transmission range largely depends on environmental conditions such as wall thickness, wall composition etc. With a free line of sight, the Bluetooth transmission range is up to 15 meters and up to 5 meters via low-latency connection.

If the audio quality gets worse or the link breaks down completely:

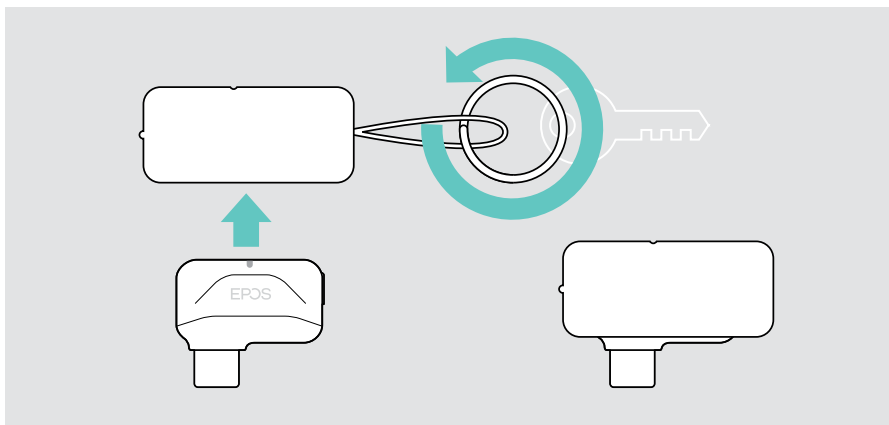
- > Re-enter the radio range of the Bluetooth device to re-connect.



After 30 minutes the earbuds will automatically turn off if there is no audio signal.

Using the dongle sleeve

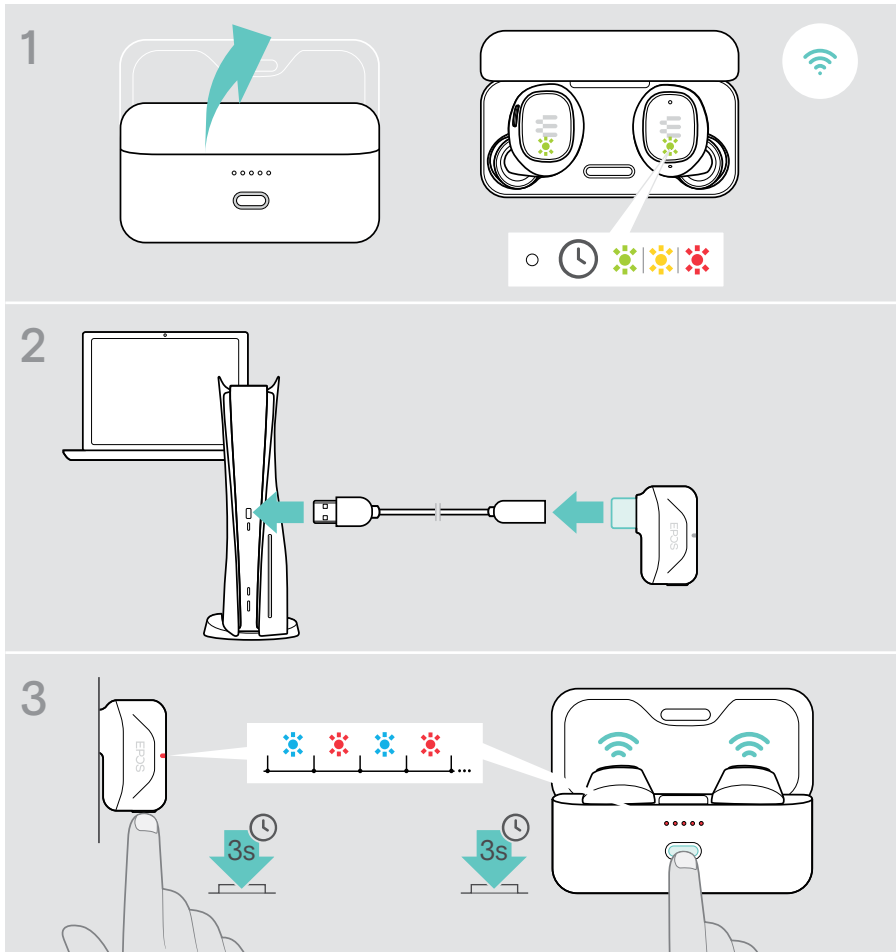
- > Attach the dongle sleeve e. g. to a key ring.
- > Put the dongle in the sleeve.



Pairing with the dongle

Out of the box the dongle is already paired with the earbuds. In case you reset your paired device list, follow the instructions below.

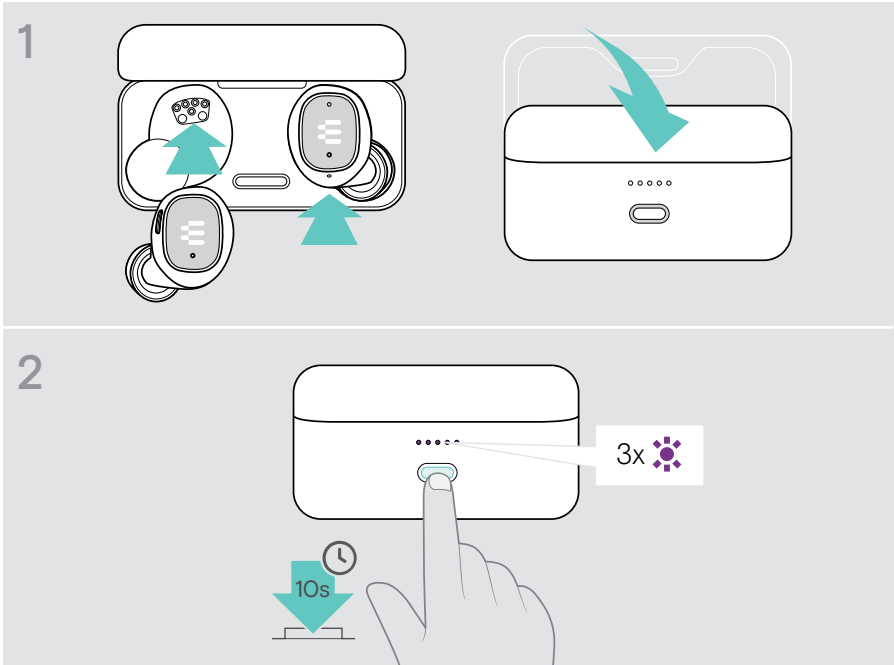
- 1 Make sure both earbuds are in the closed charge case, then open the lid. Wait until the earbud LEDs light up steadily.
- 2 Connect the dongle via the extension cable to a USB-A port of your gaming platform of choice.
- 3 Press and hold the dongle button to initiate pairing. Press and hold the charge case button to initiate pairing. The LEDs pulse red and blue. Once connected the dongle LED will light purple.



If a problem occurs ...

Clearing the pairing list of the earbuds (Reset)

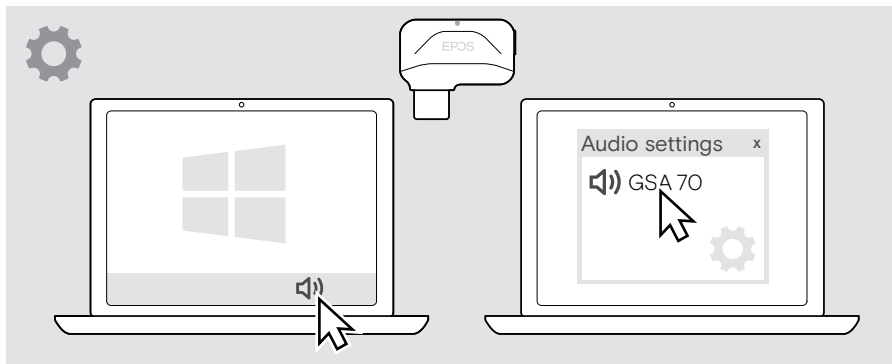
- 1 Dock the earbuds in the charge case and close the lid.
- 2 Press the button until the LEDs flash purple 3 times. The pairing list is cleared. Follow the instructions on page 6 to pair to a new device.



Changing Audio settings – Microsoft® Windows

Windows usually changes the Audio settings automatically if you connect the dongle. If the dongle and earbuds are connected but you hear no sound:

- > Right-click the Audio icon.
- > Select under output GSA 70 as main audio.



How to care for your earbuds

- > Store your earbuds in the charge case to keep them best protected.
- > Avoid storing the earbuds in hot or cold environments, for example a closed car in summer, or in winter conditions to prevent a decrease in battery lifetime or capacity.

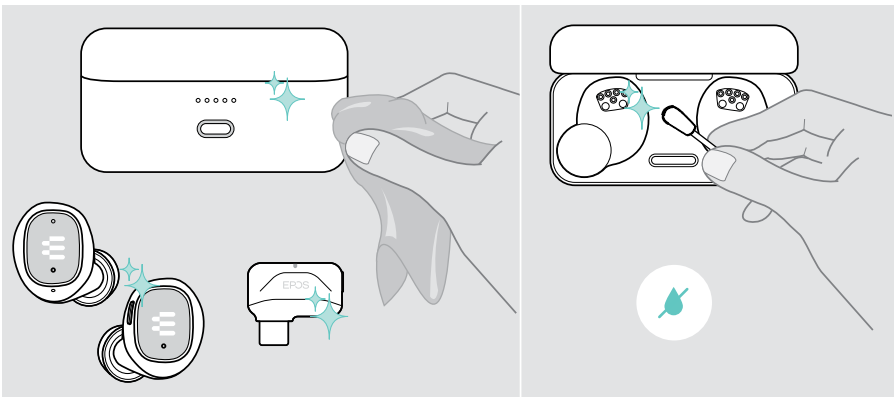
Cleaning the products

CAUTION

Liquids can damage the electronics of the product!

Liquids entering the housing of the device can cause a short circuit and damage the electronics.

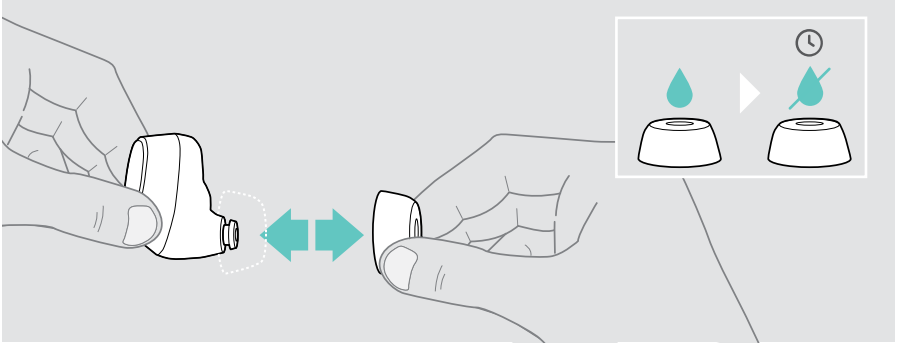
- > Keep all liquids far away from the product. Do not use any cleansing agents or solvents.
 - > Only use a dry cloth to clean the product.
 - > Clean the charging contacts of the case and the earbuds from time to time using e. g. a cotton swab.
-



Cleaning the eartips

For hygienic reasons, you should wash the eartips from time to time.

- > Remove the eartips carefully.
- > Wash the eartips with warm water or use a wet wipe and allow them to air dry.
- > Push the eartips on the in-ear sound tunnels.



Specifications

Earbuds

Ear coupling	In-ear
Transducer principle	Dynamic, closed
Dimensions (L x W x H)	23.8 x 23.2 x 23.7 mm / 0.94 x 0.91 x 0.93 in
Weight	Left: 6.1 g / 0.22 oz Right: 6.6 g / 0.23 oz
Noise cancellation	Passive
Connectivity	Low-latency and Bluetooth® 5.1
Charge cable	1.5 m USB-A to USB-C cable
Compatibility	Nintendo Switch, PC, PS4™, PS5™, Mobile / Tablet*
Listening time (through Bluetooth connection)	Up to 5 hours + 15 hours additional time via charge case (3 recharge cycles)
Low-latency gaming time (through dongle)	Up to 3.5 hours + 10.5 hours additional time via charge case (3 recharge cycles)
Charging time	1.5 hours
Rechargeable battery (built-in)	Lithium Polymer / 3.7 V DC / 60 mAh
Frequency response	Speaker: 20 – 20,000 Hz Microphone: 100 – 7,500 Hz
Transmission frequency	2402 – 2480 MHz
Range	<ul style="list-style-type: none"> Up to 15 m Bluetooth Up to 5 m in low-latency
Sound pressure level	100 dB
Pick-up pattern	Omnidirectional
Sensitivity	-22 dBV/Pa @ 1 kHz

* Low-latency connection only for Android

Charge case

Dimensions (L x W x H)	67.5 x 33.2 x 36.2 mm / 2.66 x 1.31 x 1.43 in
Weight	62 g / 2.19 oz
Connection	USB-C
Charging time	1.75 hours
Rechargeable battery (built-in)	Lithium Polymer / 3.7 V DC / 500 mAh
Max. charging voltage via USB	5.25 V DC / max. current 500 mA

Dongle

Dimensions (W x H x D)	27.5 x 23.5 x 7.5 mm / 1.05 x 0.93 x 0.30 in
Weight	2.8 g / 1.0 oz
Connector	USB-C plug
Connectivity	Bluetooth 4.2
Output power	max. 11 dBm (EIRP)

General

Temperature range	0 °C to +40 °C / +32 °F to +104 °F
Relative humidity	Operation: 10 to 80% Storage: 10 to 95%

Trademarks

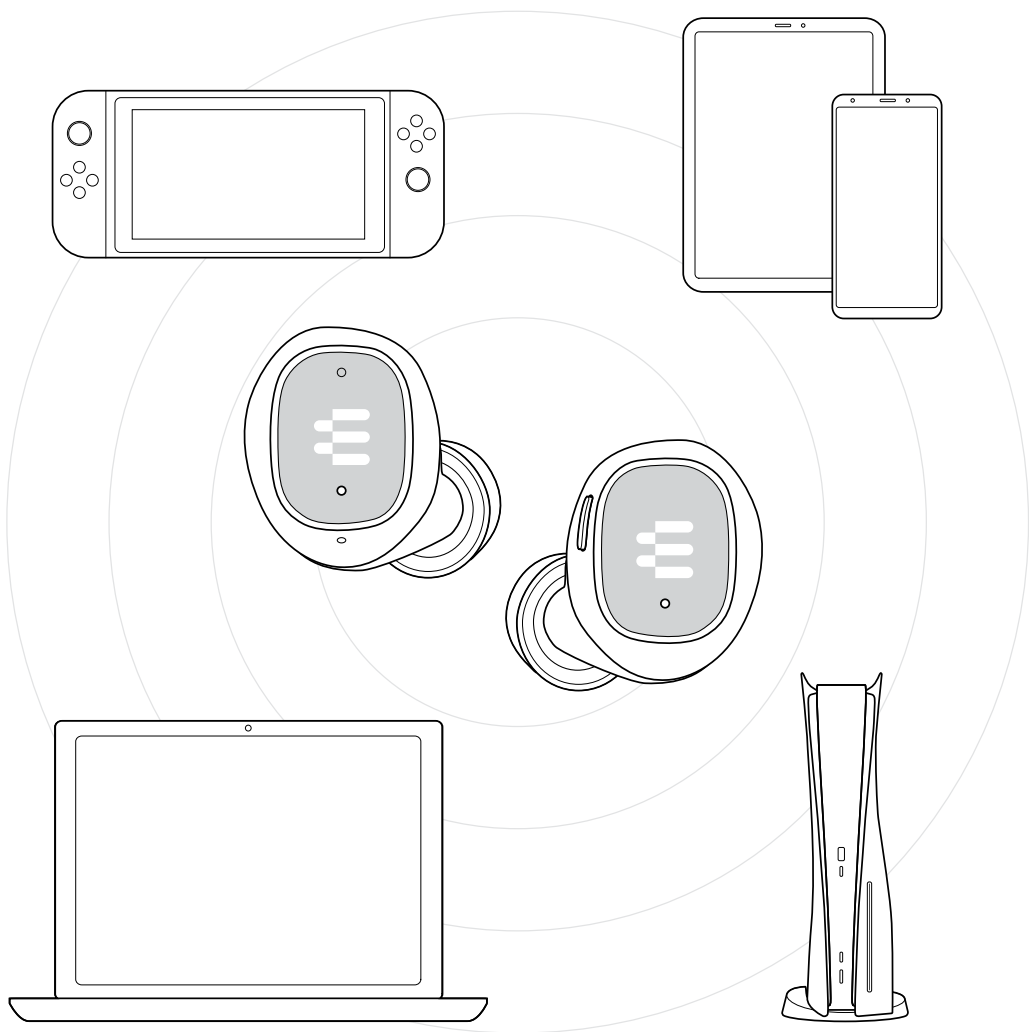
The Bluetooth® word mark and logos are registered trademarks owned by Bluetooth SIG, Inc. and any use of such marks by DSEA A/S is under license.

USB Type-C® and USB-C® are trademarks of USB Implementers Forum.

“PlayStation” is a registered trademark or trademark of Sony Interactive Entertainment Inc. also “PS4”/ “PS5” is a trademark of the same company.

All other trademarks are the property of their respective owners.

EPOS



DSEA A/S

Kongebakken 9, DK-2765 Smørum, Denmark

eposaudio.com

Publ. 10/22, A04