

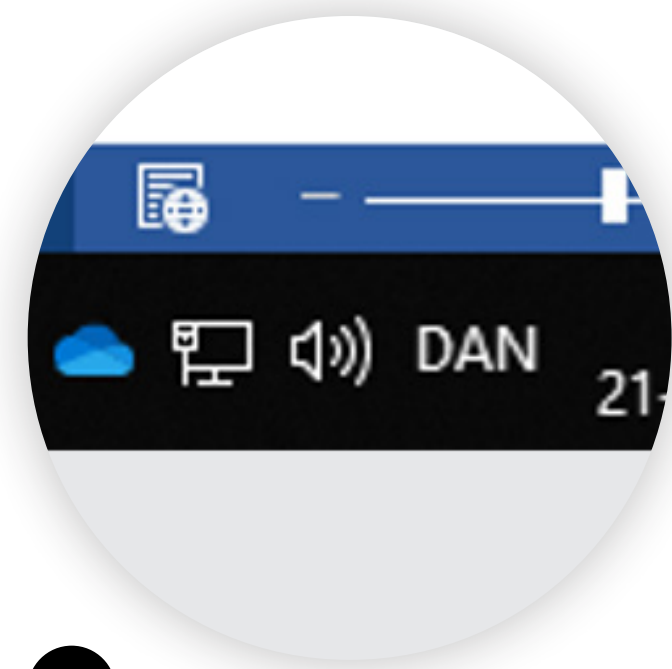
EPOS
SENNHEISER

How to get EPOS surround sound with Windows 10

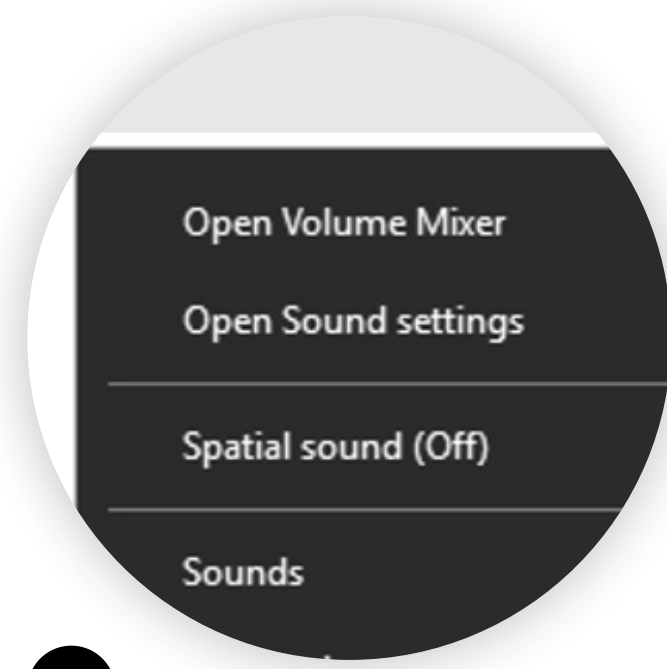


How to get EPOS surround sound with Windows 10.

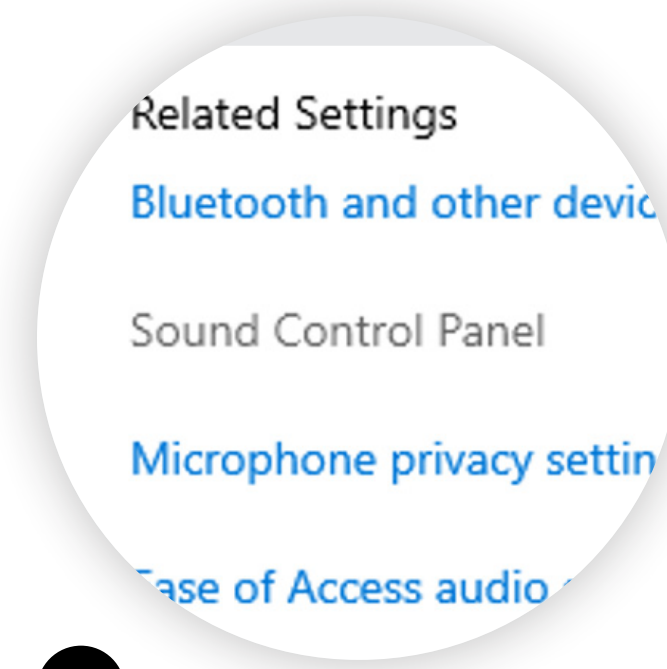
For Windows 10, the settings have been changed to be 24 bit as default, which means that as a GSX 1000 or GSX 1200 PRO user, you will need to manually change it back to 16 bit for the EPOS surround sound to work.



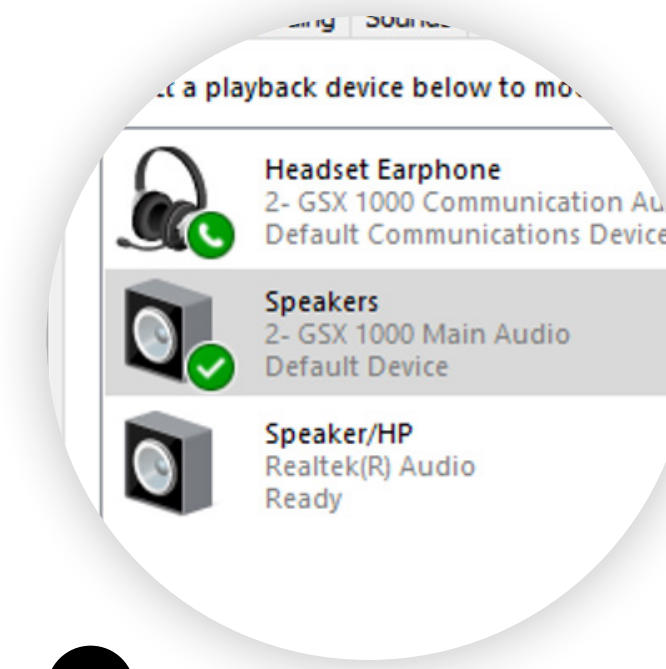
1 Right click on the speaker icon at the bottom menu bar



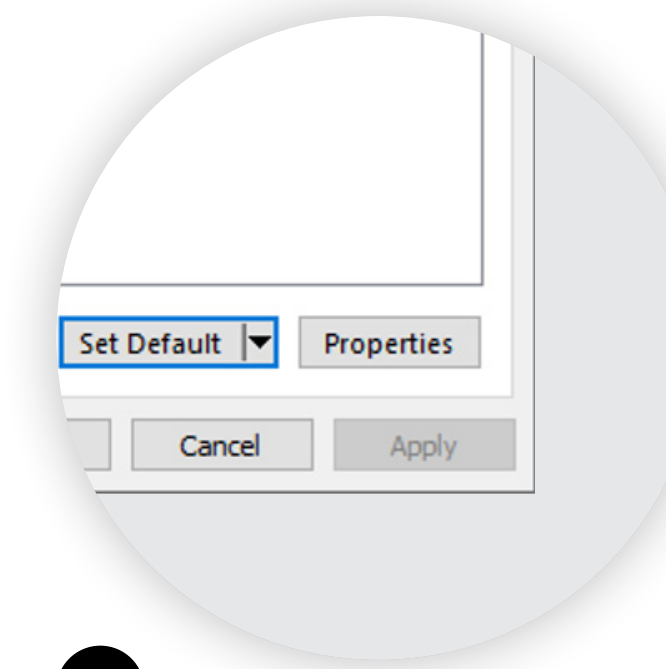
2 Open "Open Sound settings"



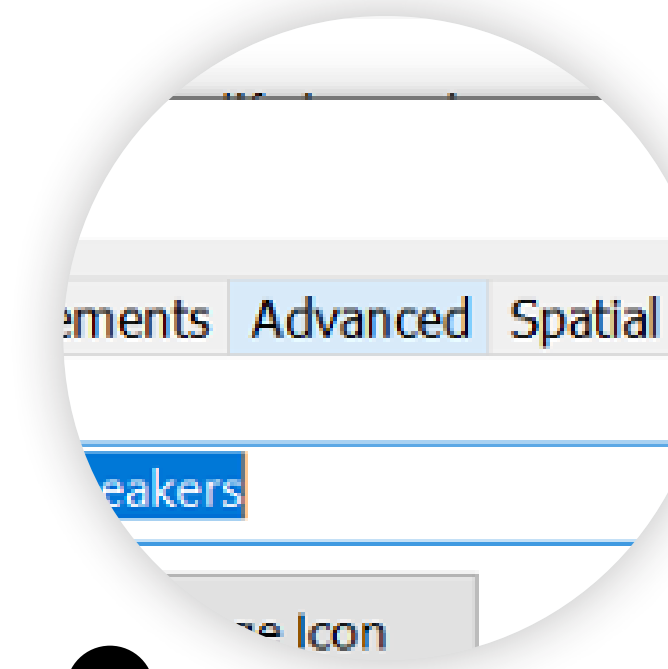
3 Open "Sound Control Panel"



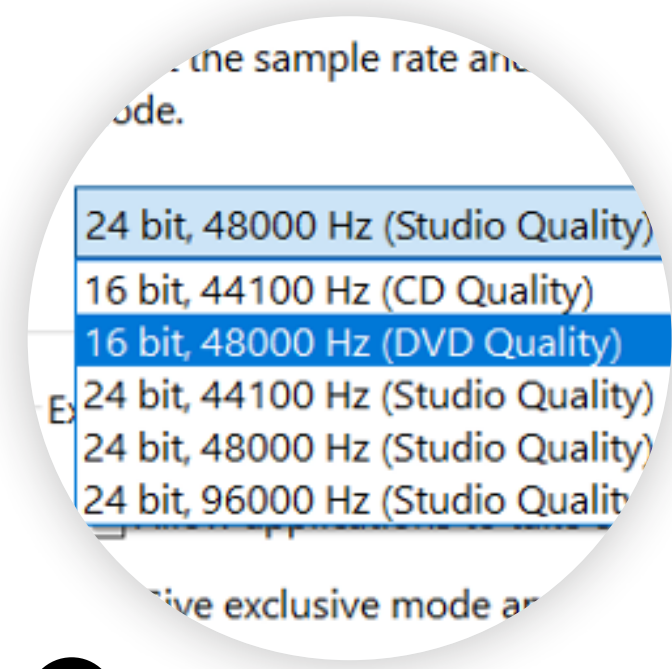
4 Under speakers, Select "GSX 1000" or "GSX 1200 PRO"



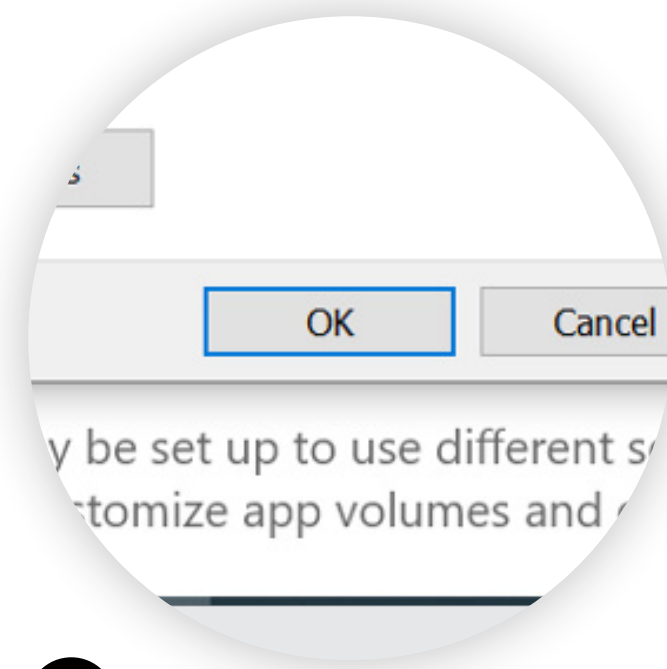
5 Open "Properties" to access the settings and preferences.
(In the same window as previous step)



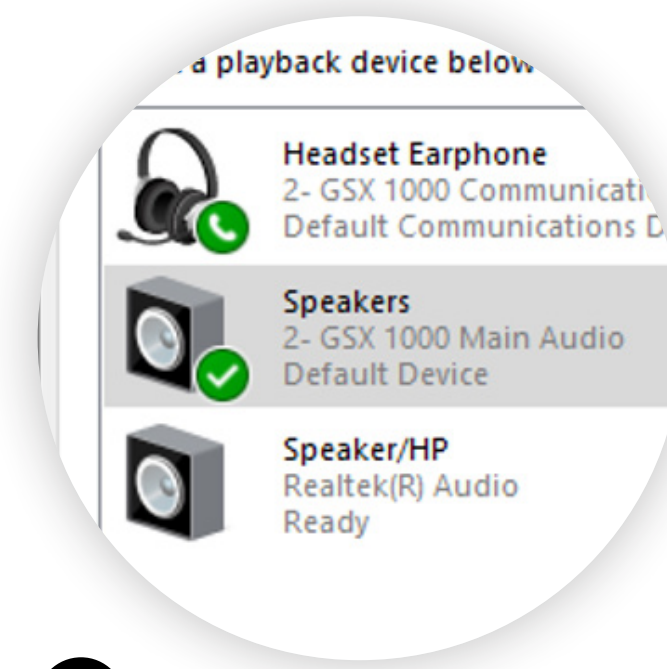
6 Select "Advanced" under Speaker Properties



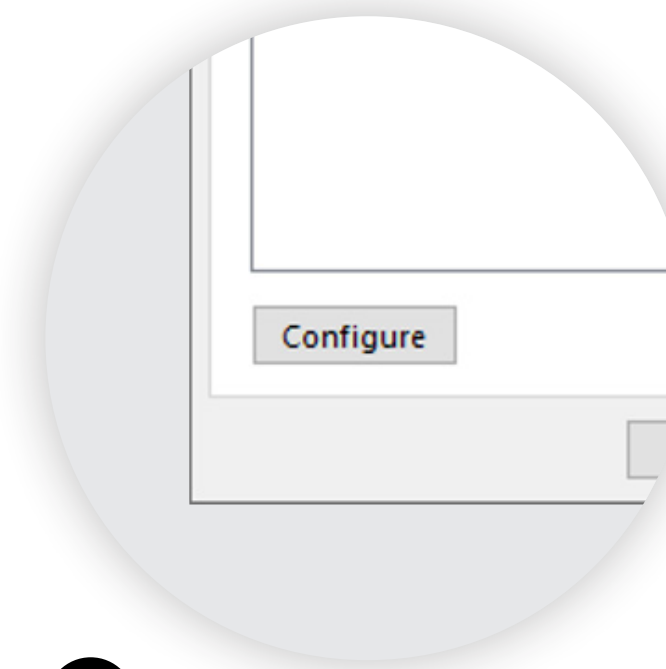
7 Access the drop down and select 16 bit, 48000 Hz (DVD Quality)
(In the same window as previous step)



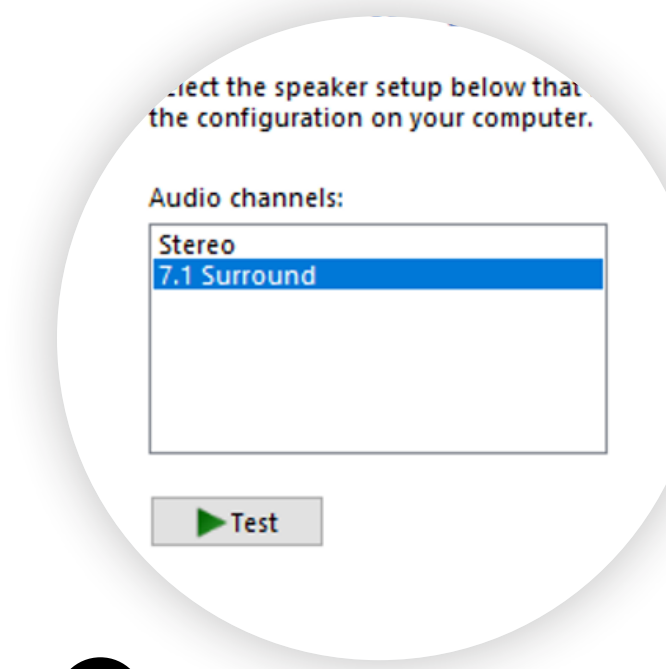
8 Click "OK" to save the change.
(In the same window as previous step)



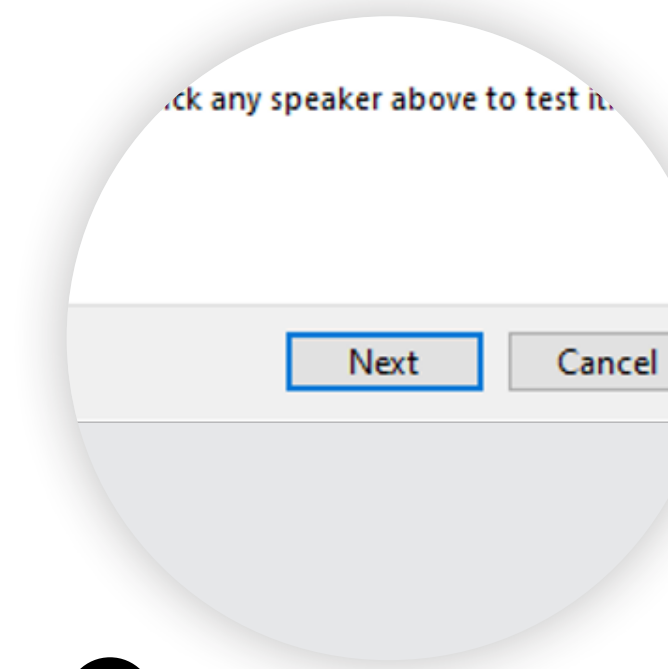
9 Check that the Speakers (GSX 1000 or GSX 1200 PRO) is still selected.



10 Click "Configure" to access the configuration settings
(In the same window as previous step)

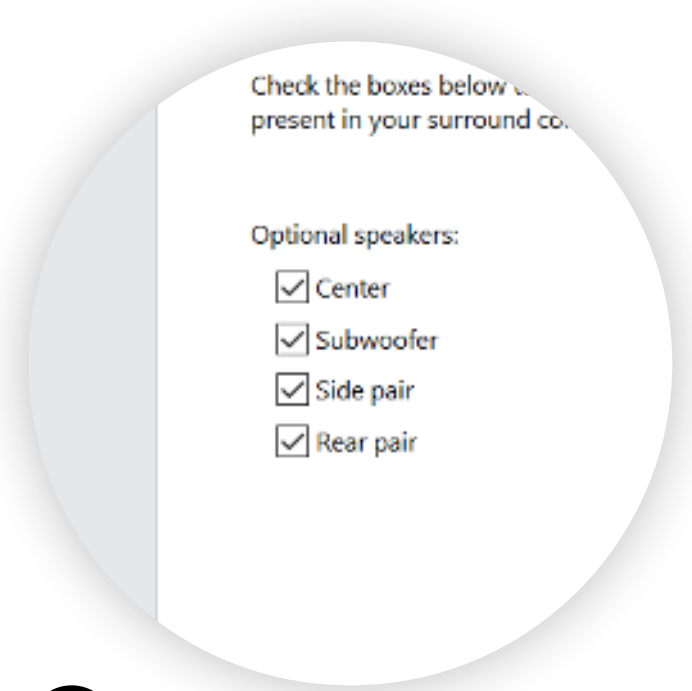


11 Select "7.1 Surround" as Audio channels under "Speaker Setup"

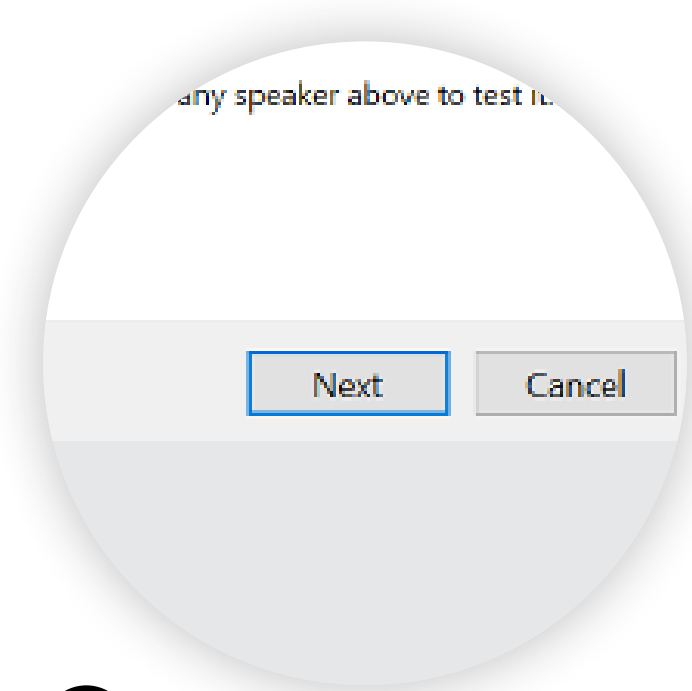


12 Click "Next"

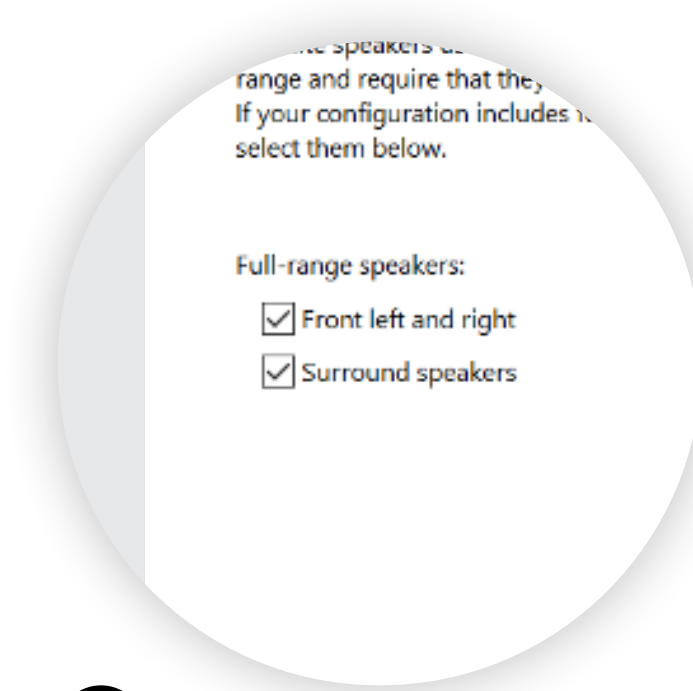
How to get EPOS surround sound with Windows 10



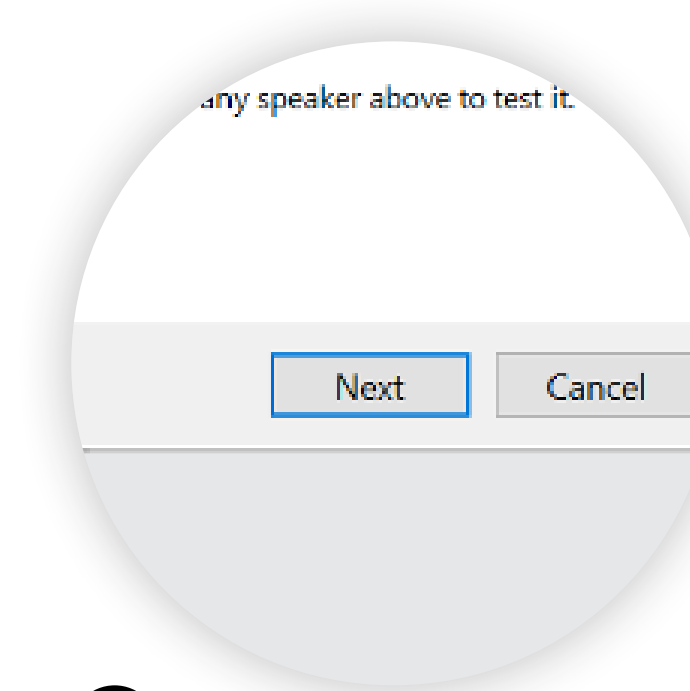
13
Option to customize your configuration



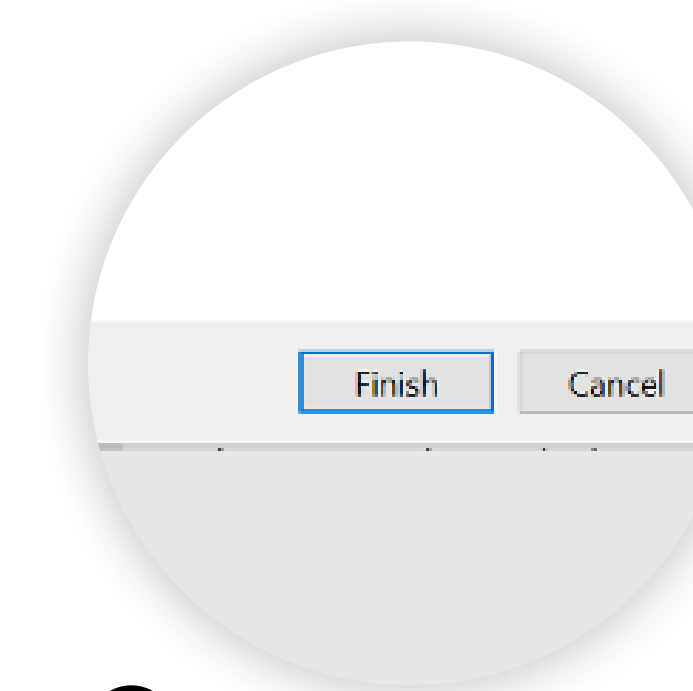
14
Click "Next"
(In the same window as previous step)



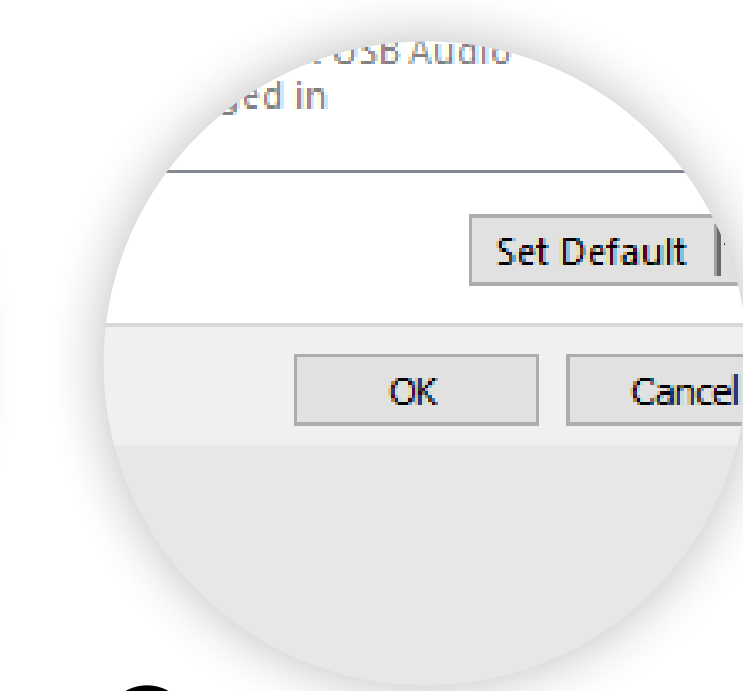
15
Option to select full-range speakers



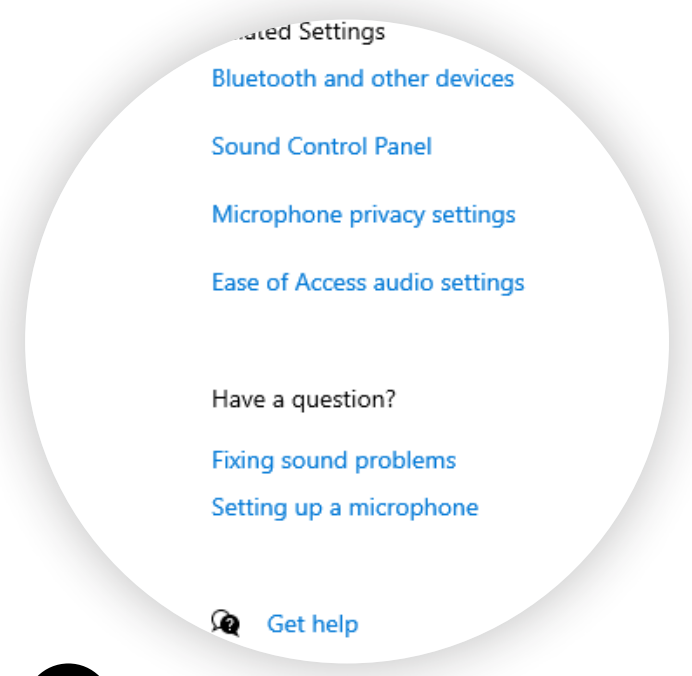
16
Click "Next"
(In the same window as previous step)



17
Klicke auf „Fertigstellen“



18
Klicke auf „OK“, um das Soundkontrollfenster zu schließen.



19
Schließe die Soundeinstellungen und genieße 7.1 EPOS Surround-Sound auf Deinem GSX 1000 oder GSX 1200 PRO.