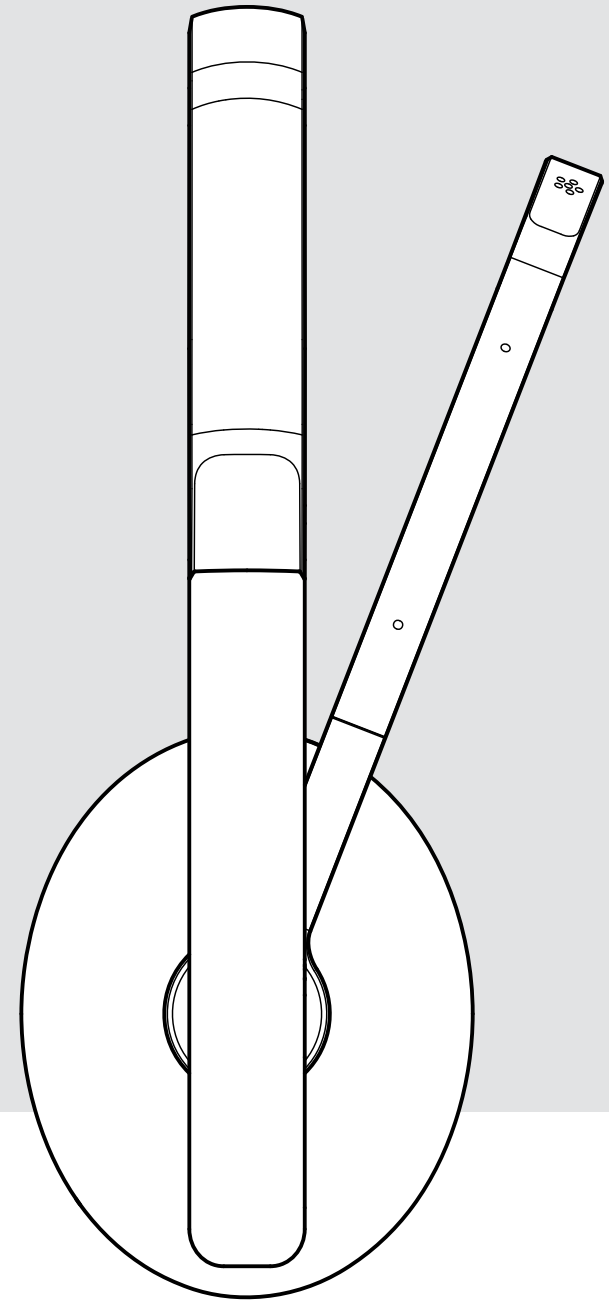


# EPOS

ADAPT 200 Series

## Battery Removal Guide



DSEA A/S

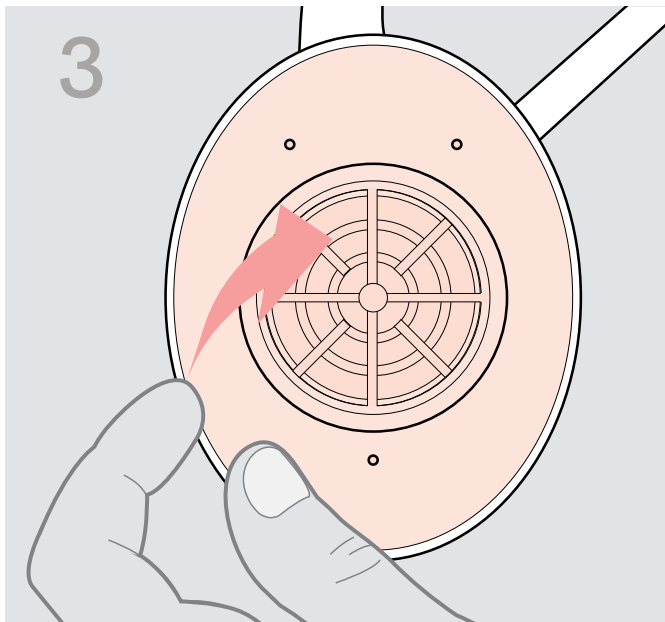
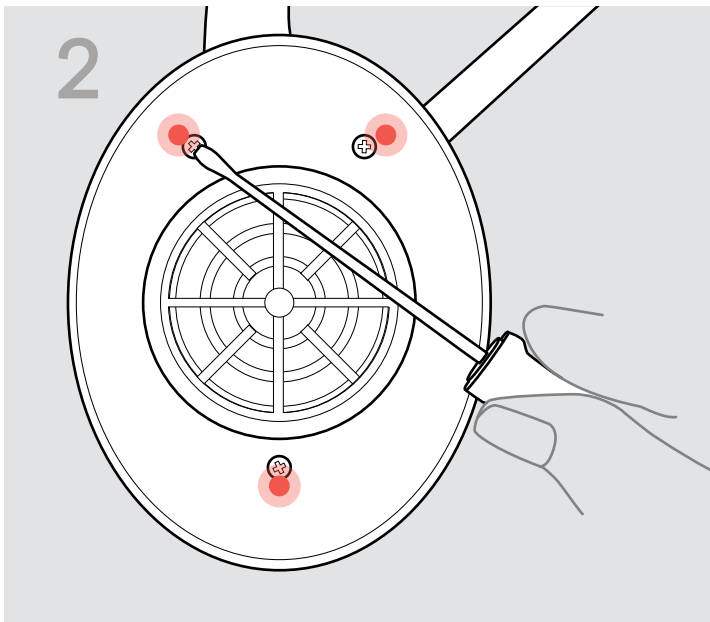
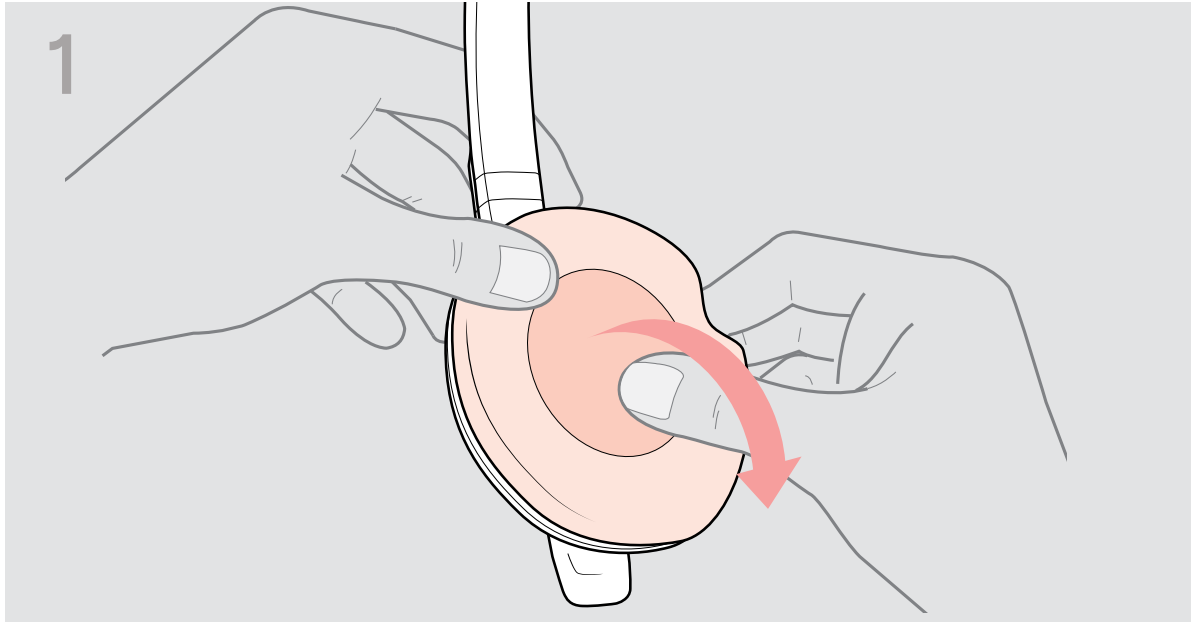
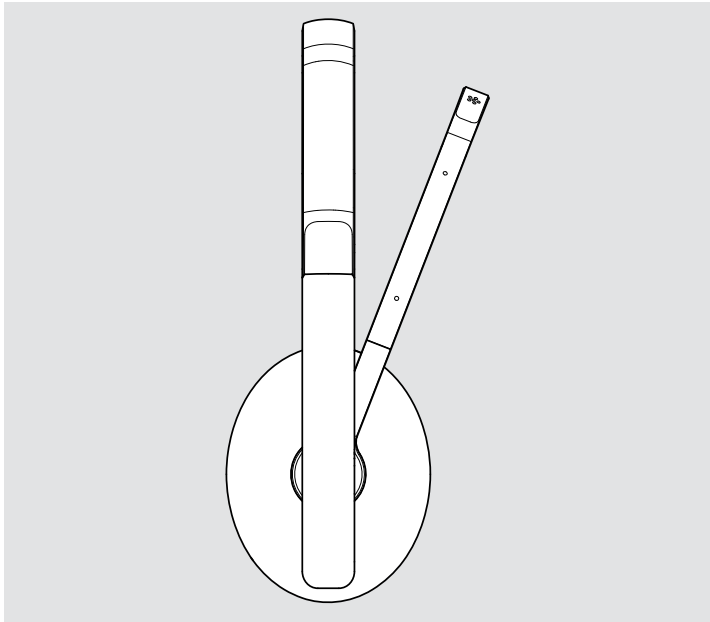
Kongebakken 9, DK-2765 Smørum, Denmark

[www.eposaudio.com](http://www.eposaudio.com)

Publ. 12/21, A01

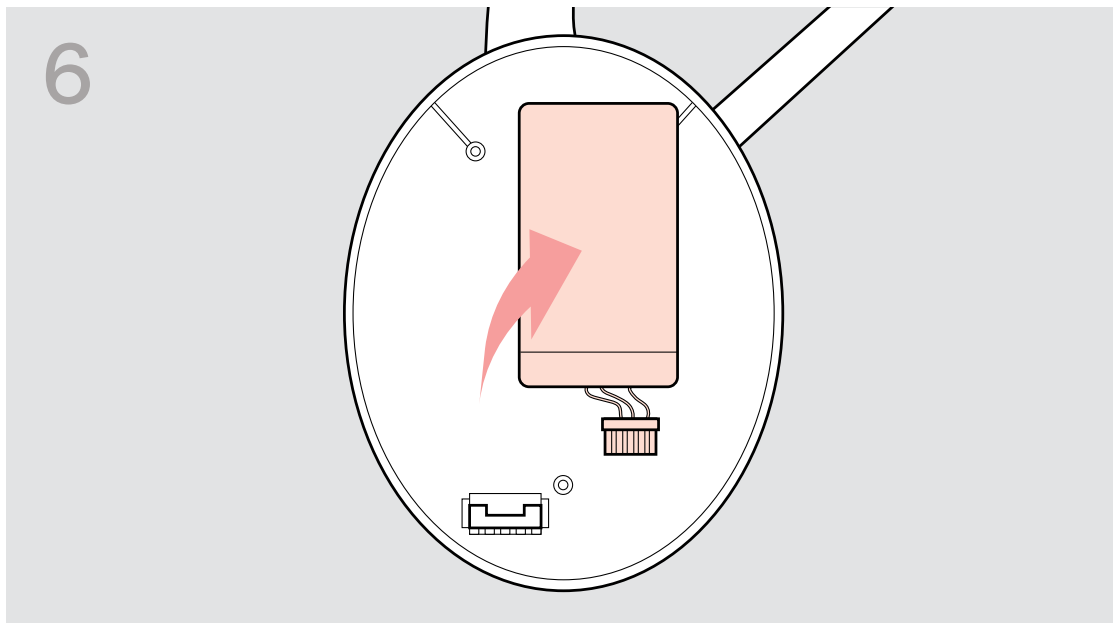
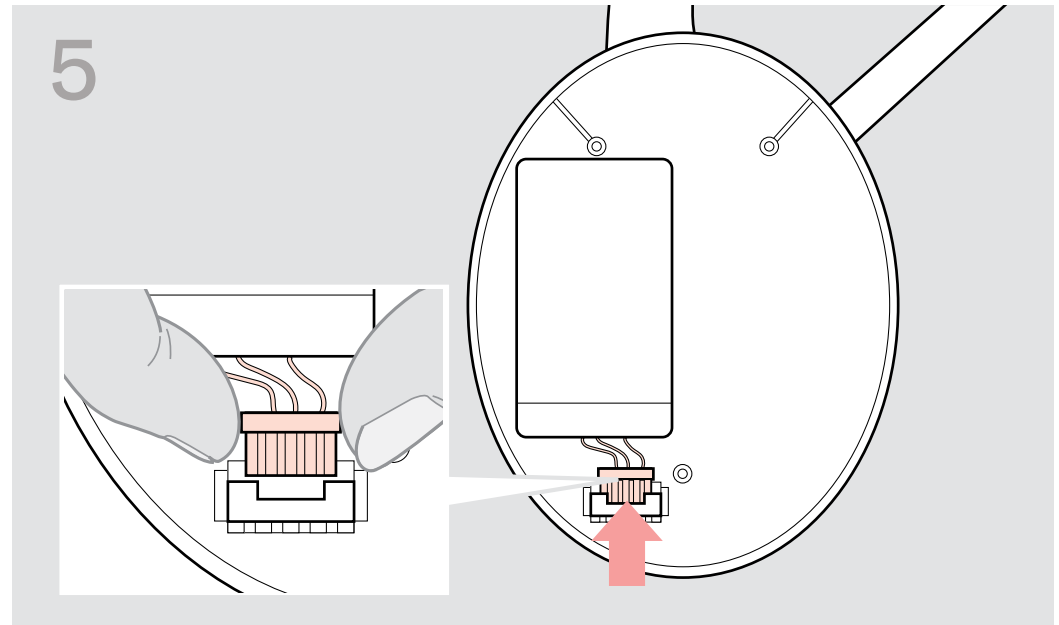
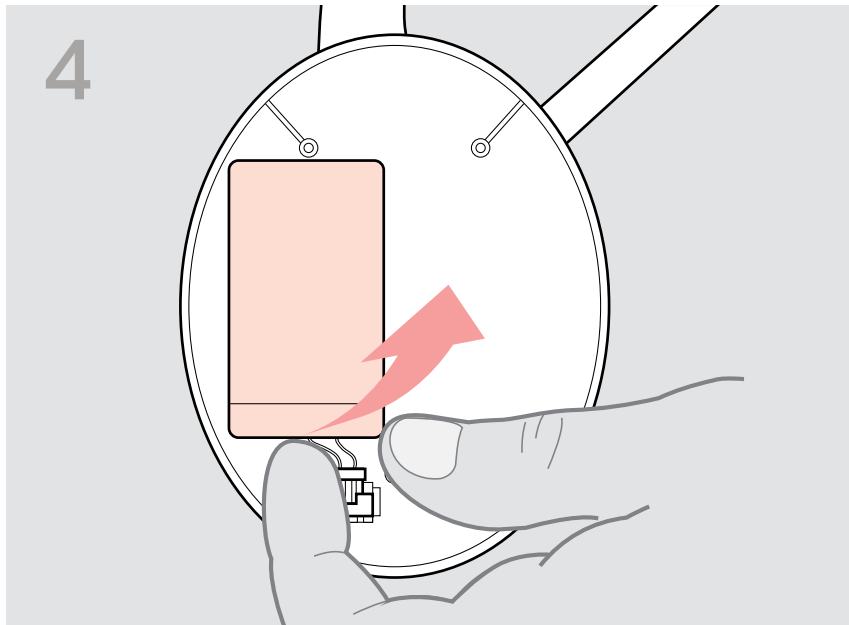
THE POWER OF AUDIO

# Battery Removal Guide



1. Remove the ear pad from the ear cup at the microphone side.
2. Remove the 3 screws with a screwdriver.
3. Lift the cover on the left-hand side.

# Battery Removal Guide



4. Lift the battery at the connector side.
5. Unplug the connector of the rechargeable battery.
6. Remove the rechargeable battery.