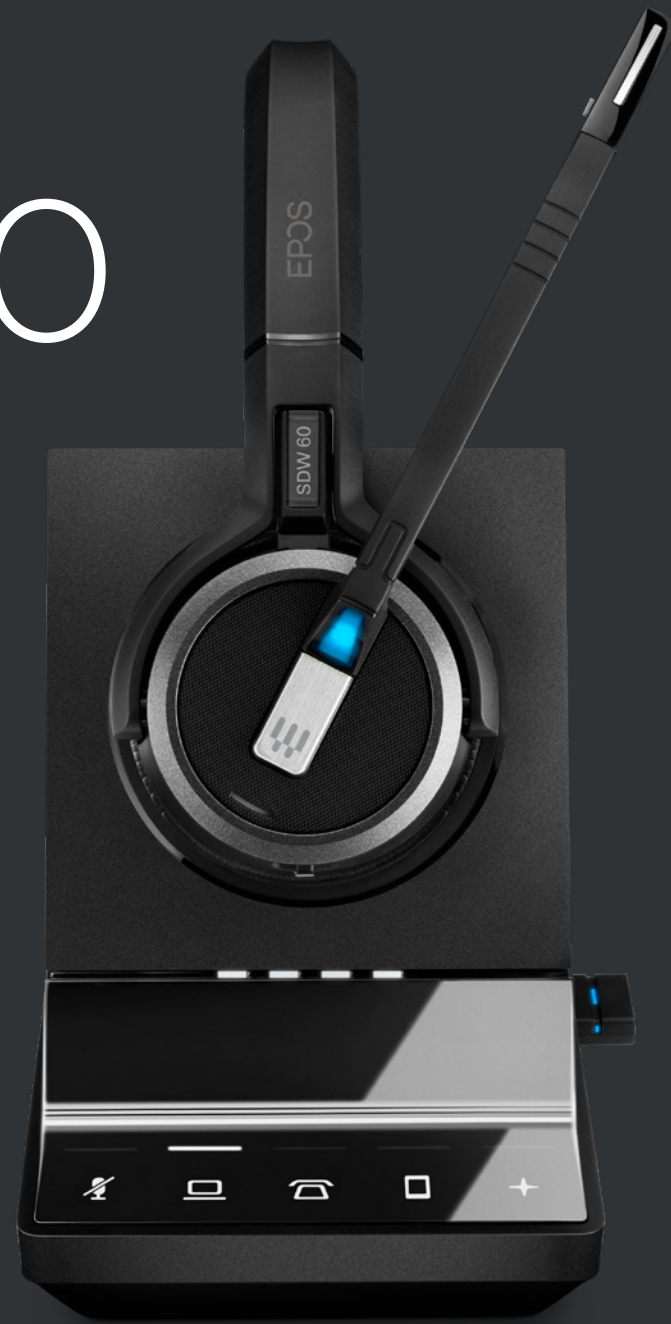


EPDS

US

# IMPACT 5000 Series

IMPACT 5000 Series is a wireless DECT headset for modern office professionals, providing next generation communication quality, future-proof device flexibility, all-day wearing comfort and advanced security to modern work environments.



# Key Features

## Get all-day wearing comfort

With soft leatherette ear pad and a choice of wearing styles for consistent comfort and well-being to increase efficiency

## Increase productivity and create focus

With clear busy light, noise dampening ear pads and easy call management

## Experience superior EPOS sound

With super wideband and advanced two microphone noise-cancelling system that meets Teams Open Office specifications

## Empower your people with total flexibility

One flexible headset that pairs easily to all devices with extensive wireless range up to 180 m/590 ft

## Ensure enhanced security for all your calls

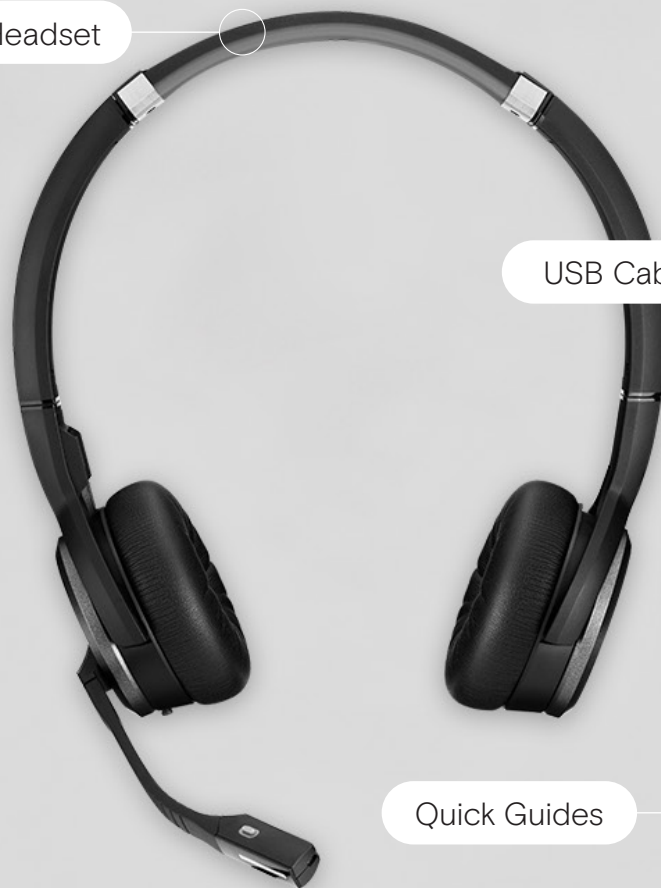
With Protected Pairing, 128-bit authentication and DECT Security certification

# What's in the Box

Base Station



Headset



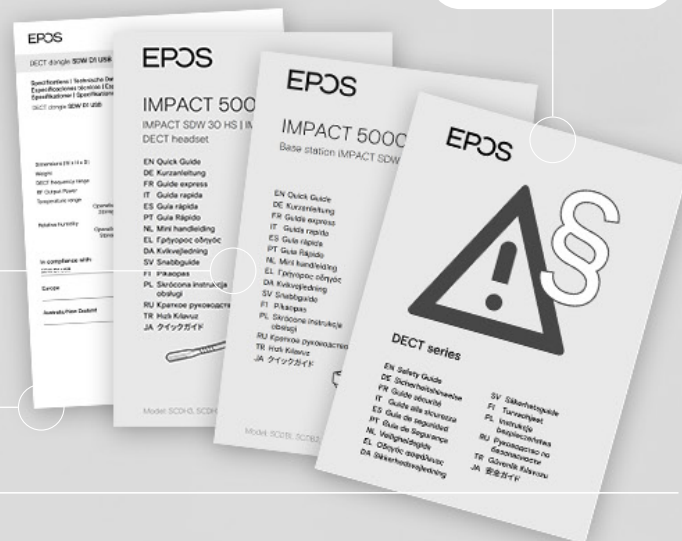
USB Dongle

USB Cable



Safety Guide

Quick Guides



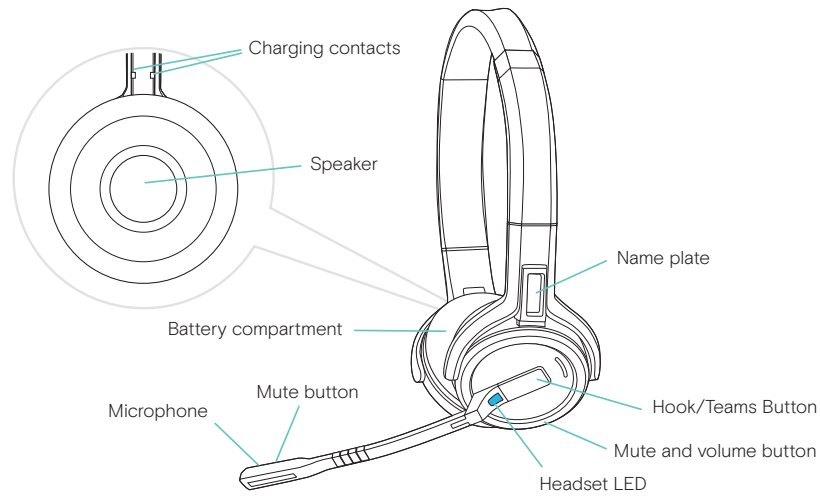
Compliance Sheet

Items in the box may vary depending on product variant and may include:

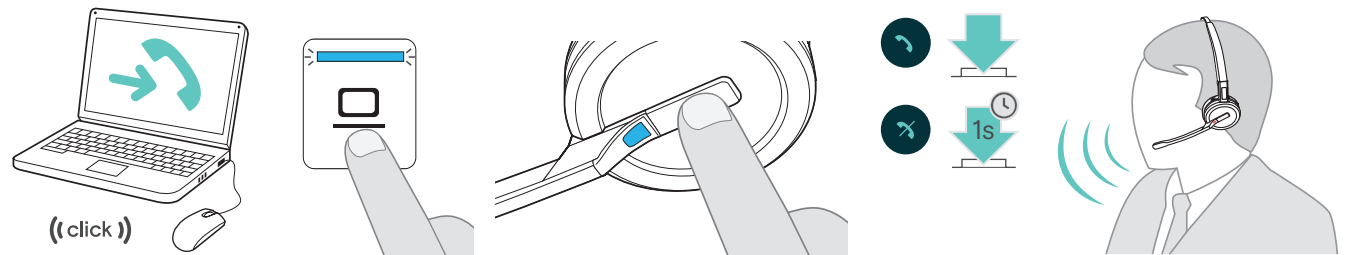
Power Suply

Audio Phone Cable

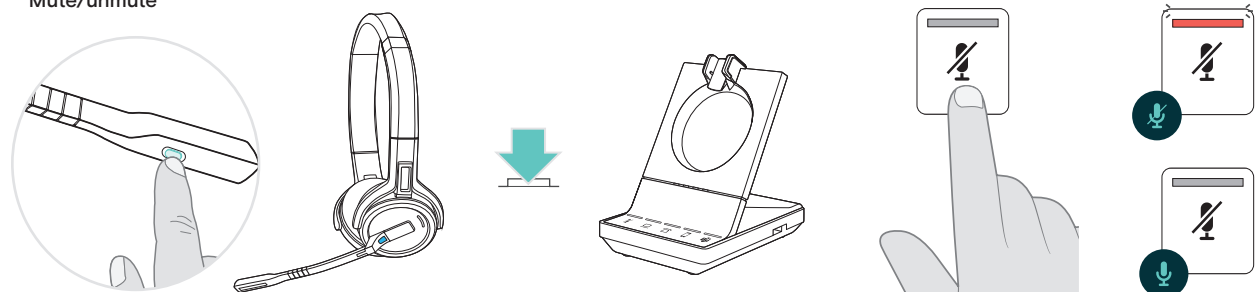
# How to Use the IMPACT 5000



## Accept/end a call



## Mute/unmute



# Additional benefits & features



## High-density wideband mode

Delivers crisp and natural sound for clear calls even in dense office environments.



## Triple connectivity

Stay connected to computer, desk phone, and mobile phone at the same time.



## Extended talk time

Have uninterrupted conversations for up to 14 hours in narrowband mode.



## Fast charging

Stay ready by getting up to 50% of battery charge in just 30 minutes.



## EPOS ActiveGard® technology

Prevent hearing loss or damage by protecting yourself from acoustic shock.



## Improved speech intelligibility

Be heard with a two-microphone noise-cancelling system and own-voice detection.



## EPOS Manager

Configure, manage, and monitor device usage remotely from a central admin portal



## 4-headset conferencing

Use the same base station to set up phone conferences for up to 4 headsets.



## Rich multimedia experience

Enjoy music and multimedia with exceptional quality stereo sound.

# Product data

1/6

## General

Wearing style	Single- and double-sided headset
Headset weight	<b>501X:</b> 44 g / 1.55 oz (Ear hook version) 58 g / 2.05 oz (Headband version) 43 g / 1.52 oz (Neckband version) <b>503X:</b> 100 g / 3.52 oz <b>506X:</b> 136 g / 4.80 oz
DECT	1.920 to 1.930 MHz (US)
Warranty	2 years

## Audio

Speaker frequency response	<b>501X:</b> 100 Hz - 11.0 kHz (Super wideband) 100 Hz - 7.5 kHz (Standard wideband and High density wideband) 150 Hz - 3.5 kHz (Narrowband) <b>503X:</b> 50 Hz - 11.5 kHz (Super wideband) 50 Hz - 7.5 kHz (Standard wideband and High density wideband) 150 Hz - 3.5 kHz (Narrowband) 20 Hz - 20 kHz (Fullband - music mode) <b>506X:</b> 150 Hz - 11.5 kHz (Super wideband) 150 Hz - 7.5 kHz (Standard wideband and High density wideband) 150 Hz - 3.5 kHz (Narrowband) 20 Hz - 20 kHz (Fullband - music mode)
Microphone type	Digital MEMs microphones - two microphone noise-cancelling system for exceptional speech clarity
Microphone frequency response	<b>501X:</b> 100 Hz - 11.0 kHz (Super wideband) 100 Hz - 7.5 kHz (Standard wideband and High density wideband) 150 Hz - 3.5 kHz (Narrowband) <b>503X:</b> 100 Hz - 11.0 kHz (Super wideband) 100 Hz - 7.5 kHz (Standard wideband and High density wideband) 150 Hz - 3.5 kHz (Narrowband) <b>506X:</b> 100 Hz - 11.0 kHz (Super wideband) 100 Hz - 7.5 kHz (Standard wideband and High density wideband) 150 Hz - 3.5 kHz (Narrowband)
Noise cancellation	Two microphone noise-cancelling system

# Product data

2/6

## Technical

### Charging time

**501X:** 0 - 50%: 30 minutes  
0 - 100%: 1 hour  
**503X:** 0 - 50 %: 30 minutes  
0 - 100 %: 1 hour and 30 min  
**506X:** 0 - 50 %: 30 minutes  
0 - 100%: 1 hour and 30 min.

### Standby time

**501X:** Up to 48 hours  
**503X/506X:** Up to 44 hours

### Talk time

**501X:** Up to 10 hours (Narrowband)  
Up to 7 hours (Density optimized wideband)  
Up to 8 hours (Wideband)  
Up to 6 hours (Super wideband)  
**503X:** Up to 14 hours (Narrowband)  
Up to 12 hours (Density optimized wideband)  
Up to 11,5 hours (Wideband)  
Up to 9 hours (Super wideband)  
**506X:** Up to 14 hours (Narrowband)  
Up to 12 hours (Density optimized wideband)  
Up to 11,5 hours (Wideband)  
Up to 9 hours (Super wideband)

### Range

Line of sight: 180 m / 590 ft  
Typical office building: 55 m / 180 ft

## Software

EPOS devices can be managed with following Software solutions:

### EPOS Connect

Conduct firmware updates and configure headsets for personal audio preferences.  
EPOS Connect works for Windows, Mac® and VDI/Thin client environments: [eposaudio.com/software-epos-connect](https://eposaudio.com/software-epos-connect)

### EPOS Manager

Manage, update and configure EPOS audio devices from any location.  
For both cloud and on-premises solutions: [eposaudio.com/software-epos-manager](https://eposaudio.com/software-epos-manager)

# Product data

3/6

What's in the box	Product	SDW 5013	SDW 5015	SDW 5016	SDW 5033	SDW 5035	SDW 5036	SDW 5063	SDW 5065	SDW 5066
Headset	SDW 10 HS*	●	●	●						
	SDW 30 HS				●	●	●			
	SDW 60 HS							●	●	●
Base Station	SDW 3 BS	●			●			●		
	SDW 5 BS		●	●		●	●		●	●
Dongle	BTD 800 USB Dongle			●			●			●
Cables	Power Supply	●	●	●	●	●	●	●	●	●
	USB Cable	●	●	●	●	●	●	●	●	●
	Audio Phone Cable		●	●		●	●		●	●

Quick Guide, Safety Guide and Compliance Sheet are included for all solutions

\* incl. 3-in-1 wearingstyle kit: headband, neckband, earhook and accessories



# Product data

4/6

What's in the box	Product	SDW 5013T	SDW 5016T	SDW 5033T	SDW 5036T	SDW 5063T	SDW 5066T
Headset	SDW 10 HS*	●	●				
	SDW 30 HS			●	●		
	SDW 60 HS					●	●
Base Station	SDW 3 BS T	●		●		●	
	SDW 5 BS T		●		●		●
Dongle	BTD 800 USB Dongle		●		●		●
Cables	Power Supply	●	●	●	●	●	●
	USB Cable	●	●	●	●	●	●
	Audio Phone Cable		●		●		●

Quick Guide, Safety Guide and Compliance Sheet are included for all solutions

\* incl. 3-in-1 wearingstyle kit: headband, neckband, earhook and accessories

# Product data

5/6

Product	Wearing style	Connects to	Certifications	EAN code	UPC code
SDW 5066 - US Art. no. 1000629	Double-sided	Desk phone, PC/Softphone, mobile devices	Optimized for UC and certified for Webex, Avaya, Alcatel-Lucent Enterprise, Enreach	57 14708 00430 1	8 40064 40430 3
SDW 5066T - US Art. no. 1001040	Double-sided	Desk phone, PC/Softphone, mobile devices	Optimized for UC and certified for Microsoft Teams	57 14708 00842 2	8 40064 40842 4
SDW 5036 - US Art. no. 1000625	Single-sided	Desk phone, PC/Softphone, mobile devices	Optimized for UC and certified for Webex, Avaya, Alcatel-Lucent Enterprise, Enreach	57 14708 00426 4	8 40064 40426 6
SDW 5036T - US Art. no. 1001038	Single-sided	Desk phone, PC/Softphone, mobile devices	Optimized for UC and certified for Microsoft Teams	57 14708 00840 8	8 40064 40840 0
SDW 5016 - US Art. no. 1000621	Single-sided	Desk phone, PC/Softphone, mobile devices	Optimized for UC and certified for Webex, Avaya, Alcatel-Lucent Enterprise, Enreach	57 14708 00422 6	8 40064 40422 8
SDW 5016T - US Art. no. 1001036	Single-sided	Desk phone, PC/Softphone, mobile devices	Optimized for UC and certified for Microsoft Teams	57 14708 00838 5	8 40064 40838 7
SDW 5065 - US Art. no. 1000605	Double-sided	Desk phone, PC/Softphone	Optimized for UC and certified for Google Meet, Webex, Avaya, Alcatel-Lucent Enterprise, Enreach	57 14708 00406 6	8 40064 40406 8
SDW 5035 - US Art. no. 1000601	Single-sided	Desk phone, PC/Softphone	Optimized for UC and certified for Webex, Avaya, Alcatel-Lucent Enterprise, Enreach	57 14708 00402 8	8 40064 40402 0
SDW 5015 - US Art. no. 1000597	Single-sided	Desk phone, PC/Softphone	Optimized for UC and certified for Webex, Avaya, Alcatel-Lucent Enterprise, Enreach	57 14708 00398 4	8 40064 40398 6
SDW 5063 - US Art. no. 1000593	Double-sided	PC/Softphone	Optimized for UC and certified for Webex, Avaya, Alcatel-Lucent Enterprise, Enreach	57 14708 00394 6	8 40064 40394 8
SDW 5063T - US Art. no. 1001034	Double-sided	PC/Softphone	Optimized for UC and certified for Microsoft Teams	57 14708 00836 1	8 40064 40836 3

# Product data

6/6

Product	Wearing style	Connects to	Certifications	EAN code	UPC code
SDW 5033 - US Art. no. 1000589	Single-sided	PC/Softphone	Optimized for UC and certified for Webex, Avaya, Alcatel-Lucent Enterprise, Enreach	57 14708 00390 8	8 40064 40390 0
SDW 5033T - US Art. no. 1001032	Single-sided	PC/Softphone	Optimized for UC and certified for Microsoft Teams	57 14708 00834 7	8 40064 40834 9
SDW 5013 - US Art. no. 1000585	Single-sided	PC/Softphone	Optimized for UC and certified for Webex, Avaya, Alcatel-Lucent Enterprise, Enreach	57 14708 00386 1	8 40064 40386 3
SDW 5013T - US Art. no. 1001030	Single-sided	PC/Softphone	Optimized for UC and certified for Microsoft Teams	57 14708 00832 3	8 40064 40832 5

# Spare parts & Accessories

1/1

Product	Art. no.	Description	EAN code	UPC code
SDW 10 HS	1000631	Single-sided headset with three wearing styles for SDW 501x and SDW 501xT	57 14708 00432 5	8 40064 40432 7
SDW 30 HS	1000632	Single-sided headset for SDW 503x and SDW 503xT o	57 14708 00433 2	8 40064 40433 4
SDW 60 HS	1000633	Double-sided headset for SDW 506x and SDW 506xT	57 14708 00434 9	8 40064 40434 1
SDW 3 BS - US	1000685	Base station for SDW 5013, SDW 5033 and SDW 5063	57 14708 00486 8	8 40064 40486 0
SDW 3 BS T - US	1001044	Base station for SDW 5013T, SDW 5033T and SDW 5063T	57 14708 00846 0	8 40064 40846 2
SDW 5 BS - US	1000681	Base station for SDW 50x5 and 50x6 (without BTD 800 dongle)	57 14708 00482 0	8 40064 40482 2
SDW 5 BS T - US	1001042	Base station for SDW 5016T, SDW 5036T and SDW 5066T	57 14708 00844 6	8 40064 40844 8
BTD 800	1000227	USB Bluetooth® Dongle	57 14708 00028 0	8 40064 40028 2
CH 30	1000702	Headset charger stand	57 14708 00503 2	8 40064 40503 4
CH 30 USB	1001143	USB Charging Cable	57 14708 00945 0	8 40064 40945 2
SDW D1 Accessory Pack	1000982	Carry pouch and USB-A charging cable for IMPACT 5000 headsets	57 14708 00784 5	8 40064 40784 7
SDW D1 USB	1000299	USB DECT dongle	57 14708 00100 3	8 40064 40100 5
UI 10 BL	1000701	Busylight	57 14708 00502 5	8 40064 40502 7
PS - UNI 01	1000303	Universal power supply	57 14708 00104 1	8 40064 40104 3

# Appendix

1/1

## Additional product data

Ear pad size	<b>501X:</b> ø 53 mm / 2.09 in <b>503X:</b> ø 54,5 mm / 2.15 in <b>506X:</b> ø 54,5 mm / 2.15 in
Personalization	Yes with nameplate on headset
Speaker type	High-quality Neodymium Magnet Speaker for outstanding audio quality
GAP compatible	Yes (Headset)
BTD 800 USB dongle	For more information please see <a href="https://eposaudio.com/btd-800-usb">eposaudio.com/btd-800-usb</a> (included in SDW 50x6 and SDW 50x6T)
USB-A port	Supports call handling with EPOS devices
Temperature range	Operational: +5 °C to + 45 °C / +41 °F to +113 °F Storage: -20 °C to + 70 °C / -4 °F to +158 °F
Battery (lithium polymer)	Exchangeable by service
Listen time (music mode)	Up to 9 hours (Fullband)
Auto sleep mode when out of range	Yes, after 12 hours
EPOS ActiveGard® technology	Protect users against acoustic injury caused by sudden sound burst on the line
Pairing intrusion protection	Protected pairing
Certification	DECT Security certified