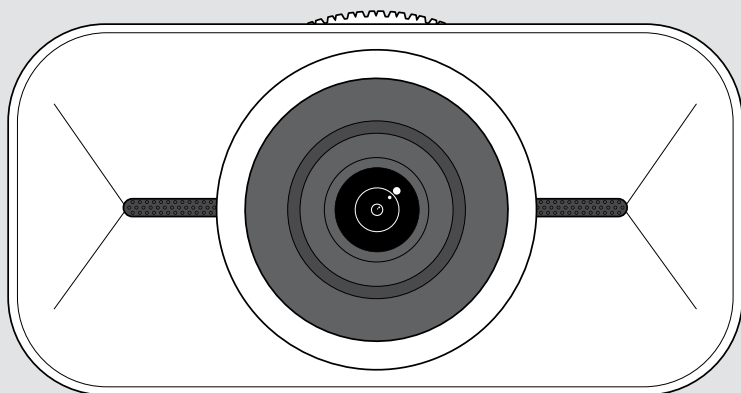


EPOS



S6

4K USB Webcam

User Guide

Model: DSWD1

Contents

| | |
|---|----|
| Welcome | 2 |
| Package contents | 3 |
| S6 at a glance | 4 |
| How to mount the S6 | 5 |
| A: Mounting on a screen / monitor | 5 |
| B: Mounting on a tripod – optional | 6 |
| How to connect and set up | 7 |
| Connecting to a computer | 7 |
| Installing EPOS Connect and the Floating menu | 8 |
| Updating the firmware | 9 |
| How to use – the basics | 10 |
| Adjusting the webcam's height | 10 |
| Standby mode & waking up | 11 |
| Opening the Floating menu | 12 |
| Opening EPOS Connect | 13 |
| Changing the zoom level | 14 |
| Using the S6 for streaming | 16 |
| Joining meetings / calls | 17 |
| Good to know | 18 |
| Fine-tuning the webcam's image | 18 |
| Muting / unmuting the microphones | 19 |
| Changing the microphone volume | 19 |
| Using the privacy shutter | 20 |
| How to care for your S6 | 21 |
| Cleaning the product | 21 |
| Carrying and storing the product | 22 |
| If a problem occurs | 23 |

Welcome

Life's Better in 4K

The S6 is an industry-leading 4K webcam that's perfect for streaming and home office use, delivering ultra-sharp 2160p video that rivals the human eye.

No matter the conditions, the S6 uses automatic light correction to make your content picture-perfect, and dual integrated microphones with digital noise cancellation let your voice take center stage.

Personalize your video settings with the EPOS Connect software, and get set up in seconds using the integrated mounting clip.

Key benefits & features

Ultra-sharp 4K video

Built for the future of streaming. Record content in Ultra HD 2160p resolution for vivid, brilliant content that will keep your audience captivated.

Dual noise cancellation microphones

Two integrated microphones with digital noise cancellation put your voice front and center – even when you're recording in loud surroundings.

Instant personalization with EPOS Connect

Create content in your image. With the EPOS Connect software, you can control the zoom, choose the perfect light settings, and customize brightness, contrast, saturation, and much more.



For safety instructions, consult the Safety Guide.

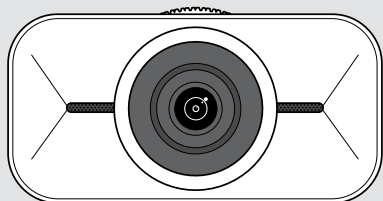


For specifications, consult the Fact sheet available at epos.link/s6

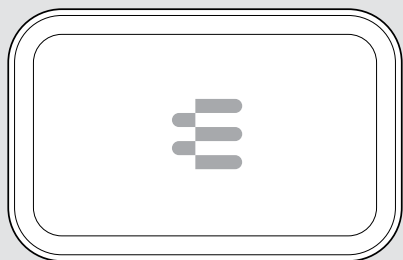
Trademarks

USB Type-C® and USB-C® are trademarks of USB Implementers Forum.
All other trademarks are the property of their respective owners.

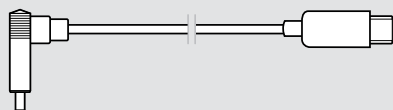
Package contents



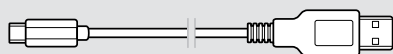
S6
4K USB webcam



Carry case



USB-C cable
with USB-C® to USB-C® connector

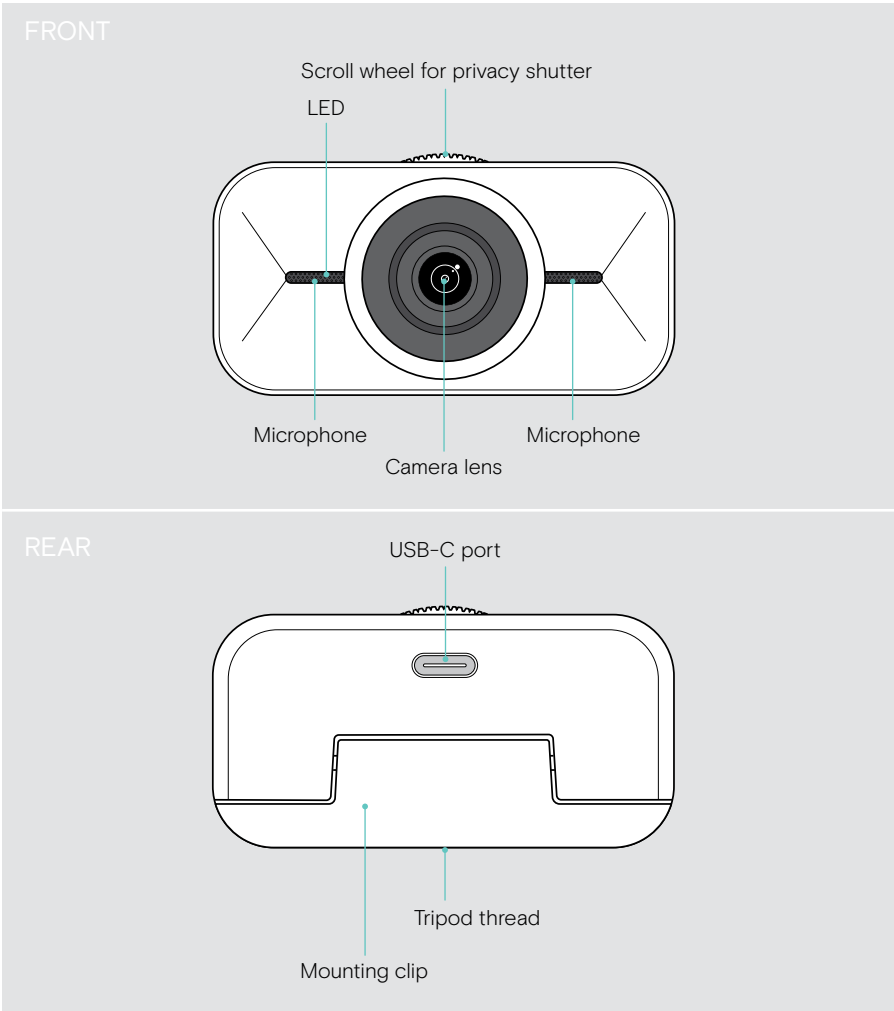


USB-A cable
with USB-C® to USB-A connector



Quick Guide
Safety Guide
Compliance sheet

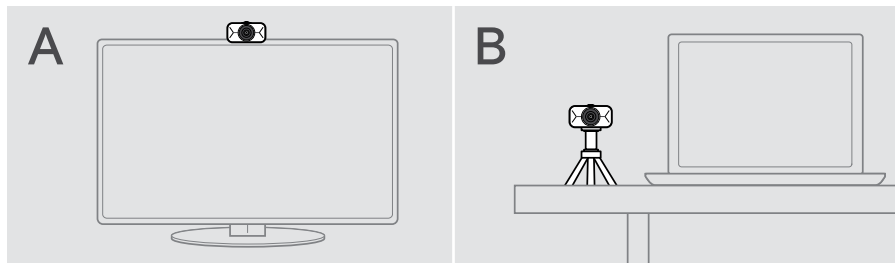
S6 at a glance



How to mount the S6

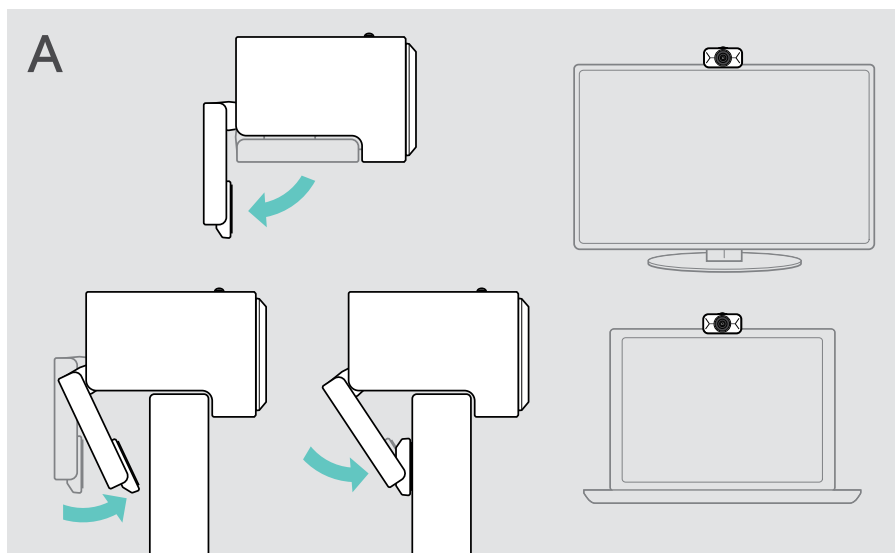
You can mount your USB webcam:

- **A** on top of a screen / monitor **or**
- **B** on a desk with an optional tripod.



A: Mounting on a screen / monitor

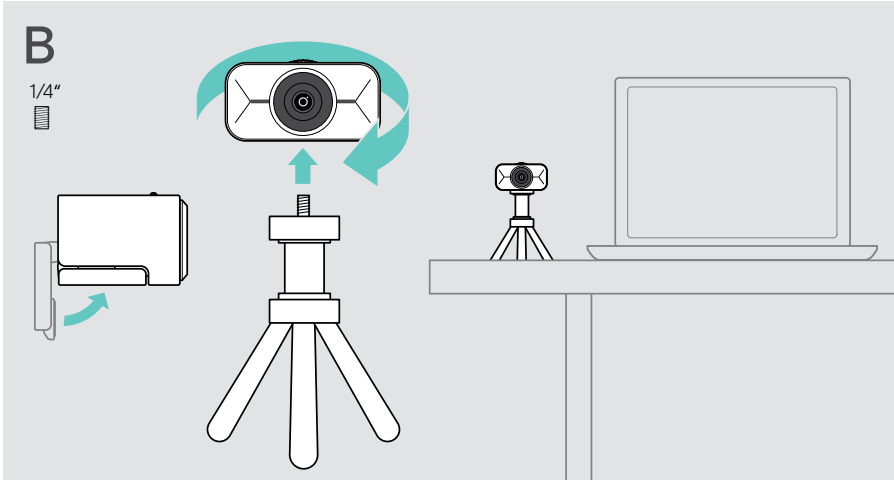
- > Fold down the mounting clip.
- > Put the S6 on the top of your screen or monitor.
- > Hold down the product and rotate the mounting clip and its foot so that it is fixed securely on your device.



B: Mounting on a tripod – optional

You can attach the S6 to any tripod with a standard 1/4" thread.

- > Fold up the mounting clip.
- > Follow the instructions of your tripod to mount the S6 securely.
- > Place the tripod on your desk so that the webcam points in your direction.

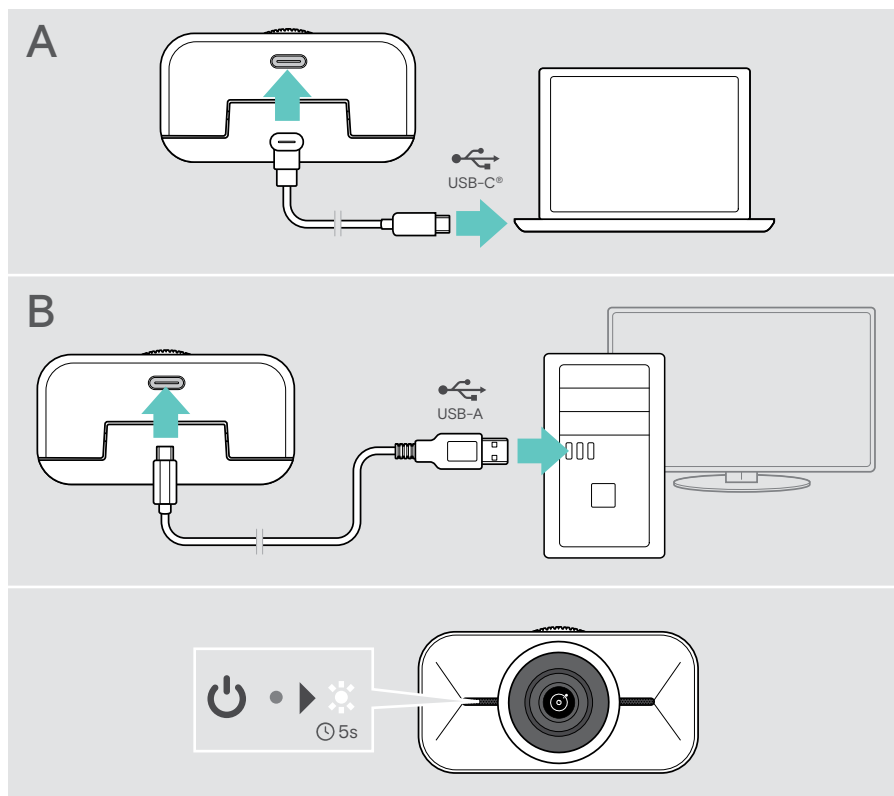


How to connect and set up

Connecting to a computer

- > Switch on your computer.
- > Connect your S6 to your computer via the provided **A** USB-C cable or **B** USB-A cable.

The S6 switches on. The LED lights up shortly. The Floating menu appears automatically, if you have installed EPOS Connect already (otherwise: see next chapter).

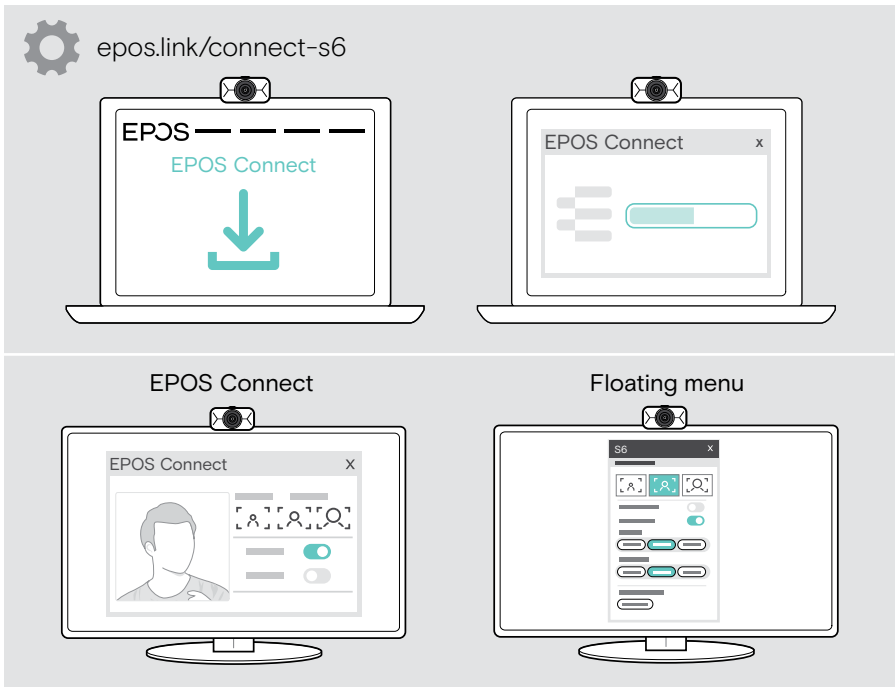


Installing EPOS Connect and the Floating menu

You can change the webcam settings via EPOS Connect or the Floating menu: e.g. swap between different zoom levels, mirror the image and adjust lighting and temperature.

The Floating menu is installed together with EPOS Connect. For how to open the Floating menu see page 12.

- 1 Download the free **EPOS Connect** software from epos.link/connect-s6.
- 2 Install the software. You need administrator rights on your computer.

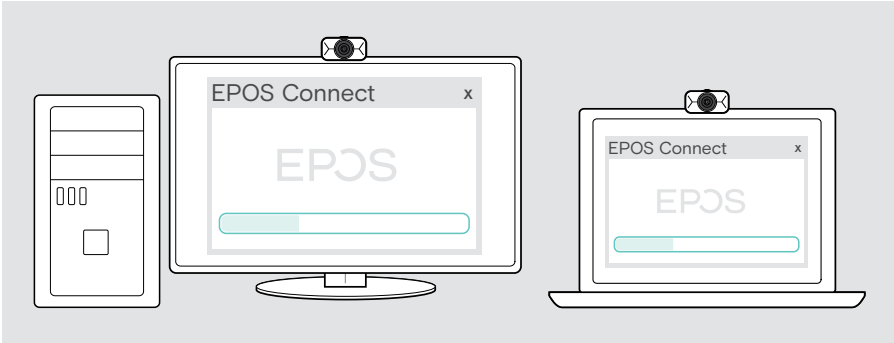


To make sure, the newest features are available, update the firmware (see next chapter).

Updating the firmware

To have the newest features available:

- > Connect the USB cable to the S6 and your computer (see page 7).
- > Start EPOS Connect. If there is a new firmware available, the software will guide you through the update process.

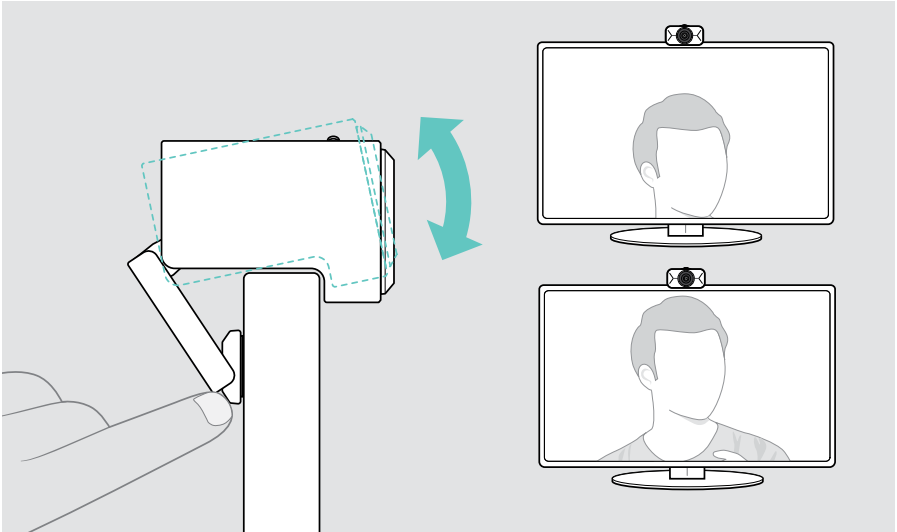


Alternatively, you can use the EPOS Gaming Suite to update the firmware of your device. To adjust video settings for your S6, EPOS Connect is required.

How to use – the basics

Adjusting the webcam's height

- > Open your video conferencing platform / streaming software or EPOS Connect to have the camera picture available.
- > Hold down the mounting clip's foot and move the webcam up or down.



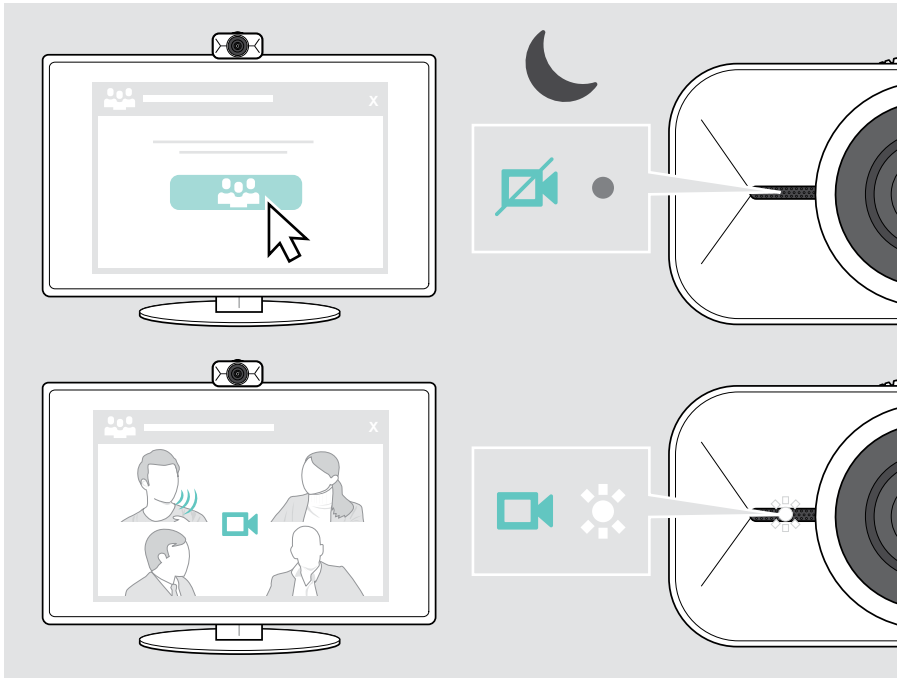
Standby mode & waking up

The S6 turns on automatically as soon as it is connected to your computer. If the webcam is not in use, it turns to standby mode to save energy.

To wake up your S6:

- > Start to use the webcam e.g. via your video conferencing platform or streaming software.

The LED lights up white as long as you are in the call.

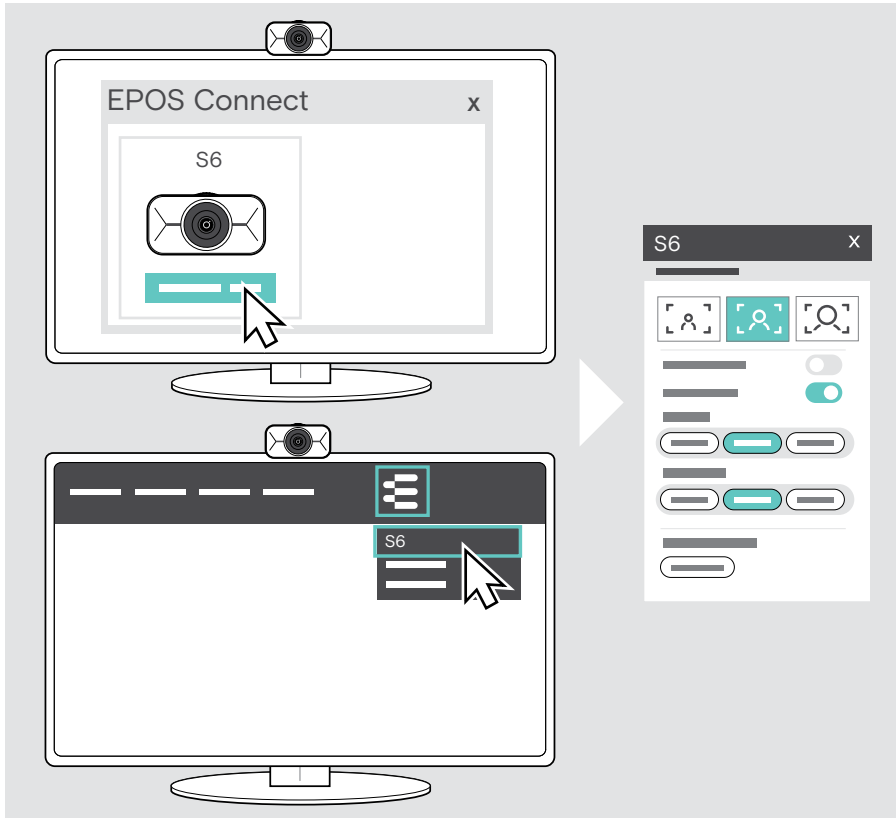


Opening the Floating menu

The Floating menu appears automatically*, if you connect the webcam to your computer (EPOS Connect needs to be installed).

If you have closed the Floating menu:

- > Click on the Floating menu button in EPOS Connect or
- > Click on the EPOS Connect icon in the task bar and select “S6” to open it.



All your changes in the Floating menu settings will be saved automatically.

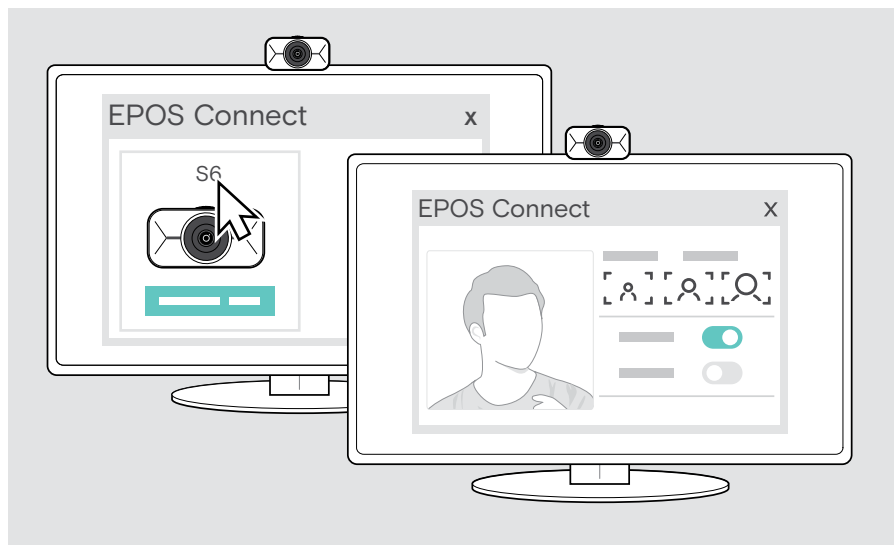


*The automatic pop up of the Floating menu can be disabled via EPOS Connect.

Opening EPOS Connect

EPOS Connect offers the same settings as the Floating menu. In addition, you can e.g. update the firmware of the product.

- > Open EPOS Connect and click on “S6”.



All your changes in the EPOS Connect settings will be saved automatically.

Changing the zoom level

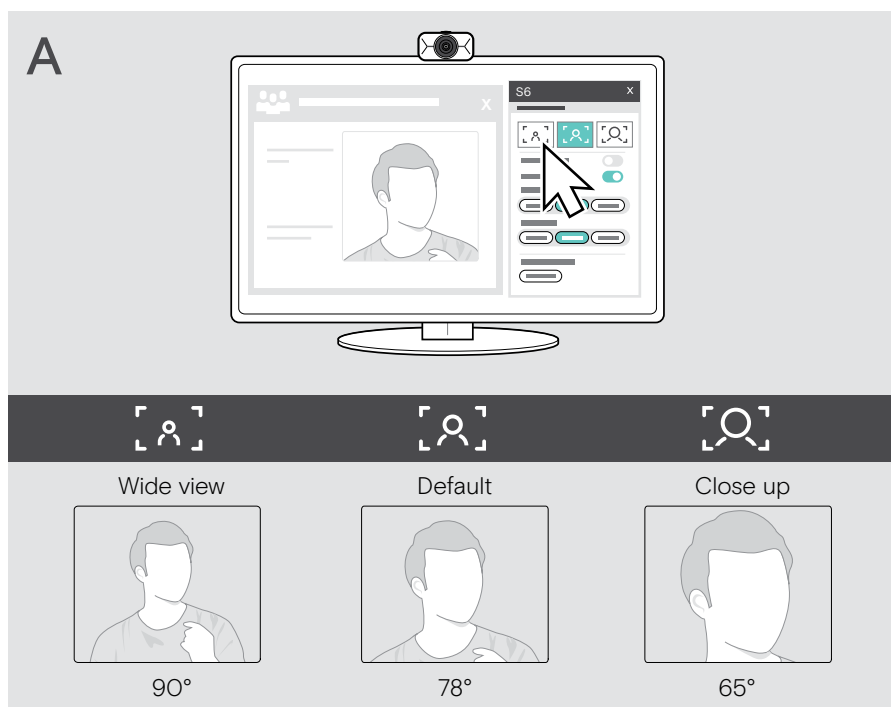
The webcam's zoom level can be changed via the Floating menu or EPOS Connect. If you use the Floating menu: open your video conferencing platform or streaming software to see the camera picture.

You can change the zoom level:

- A quickly, by using one of the 3 presets or
- B in small steps via the Advanced menu.

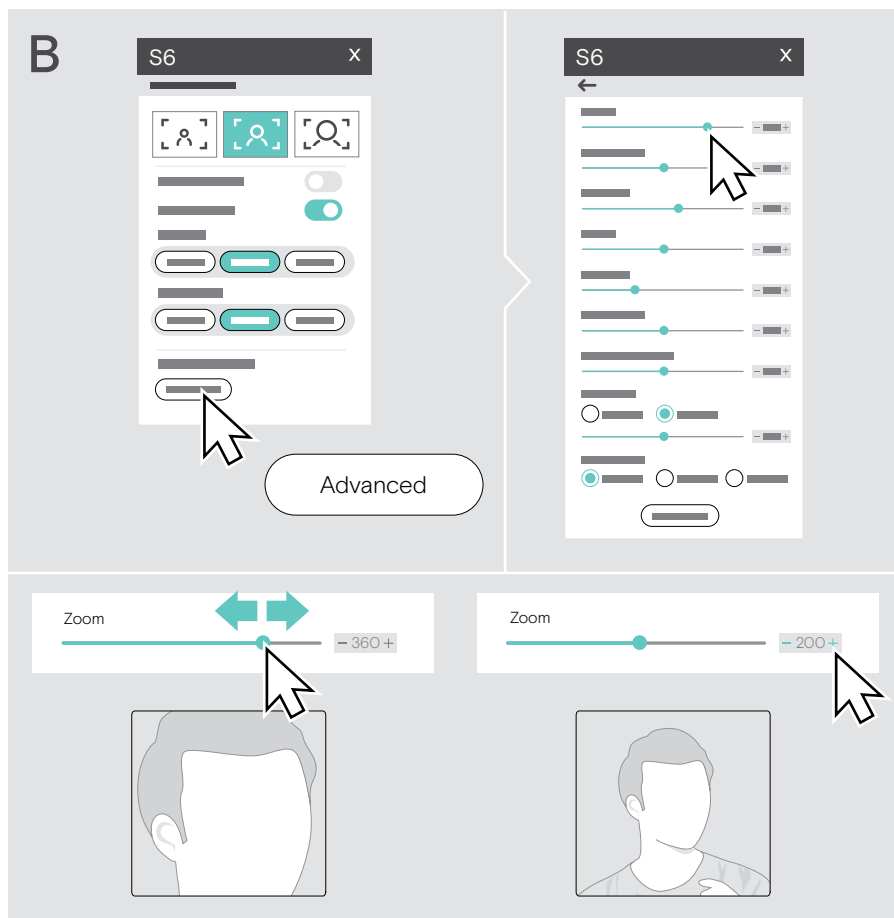
A: Changing the zoom level via the presets

- > Click one of the zoom level icons.
The lens adjusts to the selected angle.



B: Adjusting in smaller steps – Advanced menu

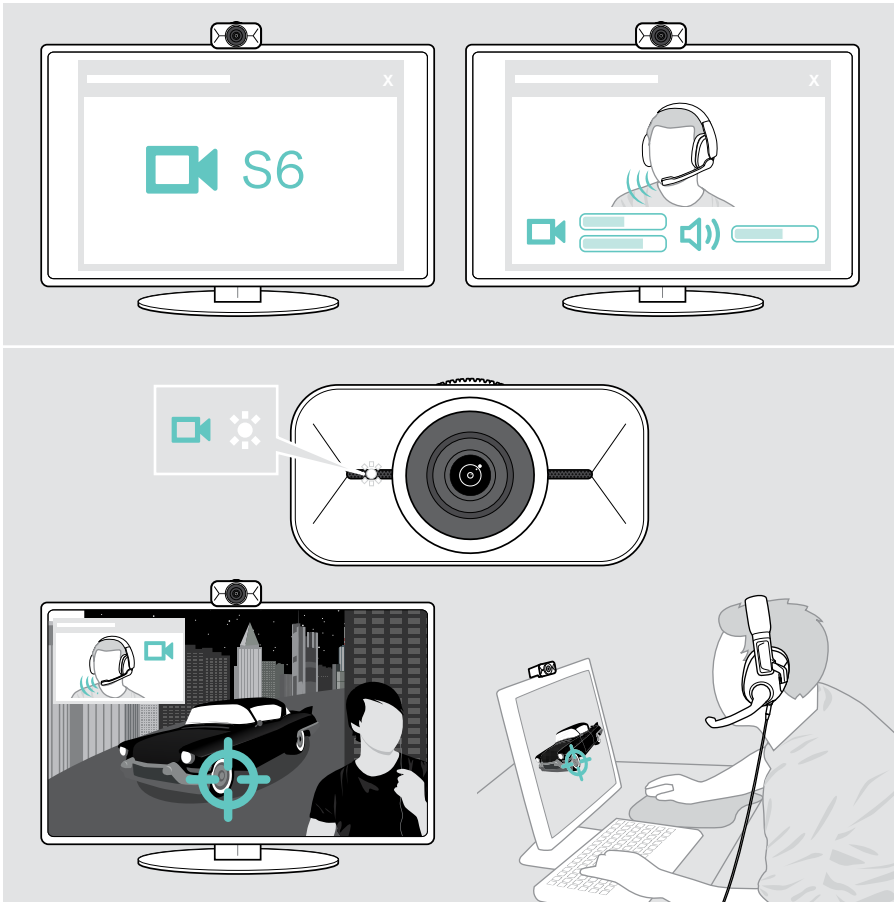
- > Go to the tab “Advanced”.
- > Use the slider or the + and - buttons to zoom in or out in smaller steps.
The lens adjusts to the selected angle.



Using the S6 for streaming

You can use the webcam with your streaming software of choice* (e.g. OBS Studio, Streamlabs).

- > Select S6 as camera in your streaming software and adjust the settings, until you obtain the desired look.
- > Start your streaming session. The LED lights up white as long as the camera is actively used.



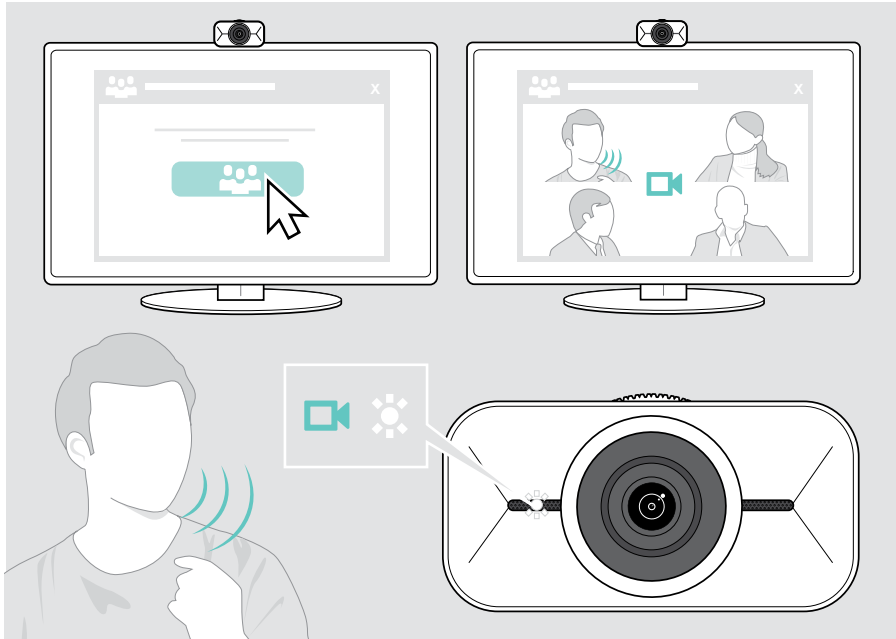
You can always go back to the streaming software or use the Floating menu if you want to further adjust the settings of your S6.

*EPOS cannot guarantee that the S6 will work with every streaming platform. Contact our support team for inquiries about streaming platform compatibility.

Joining meetings / calls

You can join meetings and calls via your video conferencing platform (e.g. Zoom, Microsoft Teams, Google Meet).

- > Join your meeting or initiate a call via your video conferencing platform.
The webcam and the microphones get active. The LED lights up white.



Good to know

Fine-tuning the webcam's image

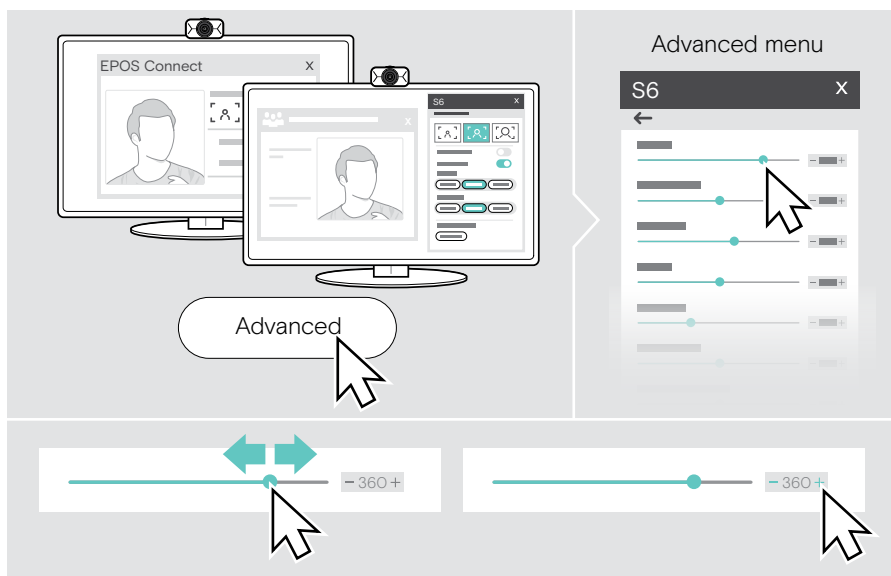
You can adjust the webcam's image via the Floating menu or EPOS Connect. If you use the Floating menu: open your video conferencing platform or streaming software to see the camera picture.

> Adjust the webcam's image via the presets in the Basic settings.

To change the settings even more precisely, use the Advanced menu:

> Click on "Advanced" and make your personal adjustments.

If anything goes wrong or to go back to default settings, click on "Reset" in the Advanced menu.



Basic settings

- Zoom (3 zoom level presets)
- Mirror Image
- Anti Redness
- Light
- Temperature

Advanced settings

- Zoom (small steps)
- Brightness
- Contrast
- Hue
- Saturation
- Sharpness
- Exposure compensation
- White Balance
- Anti-flicker

Muting / unmuting the microphones

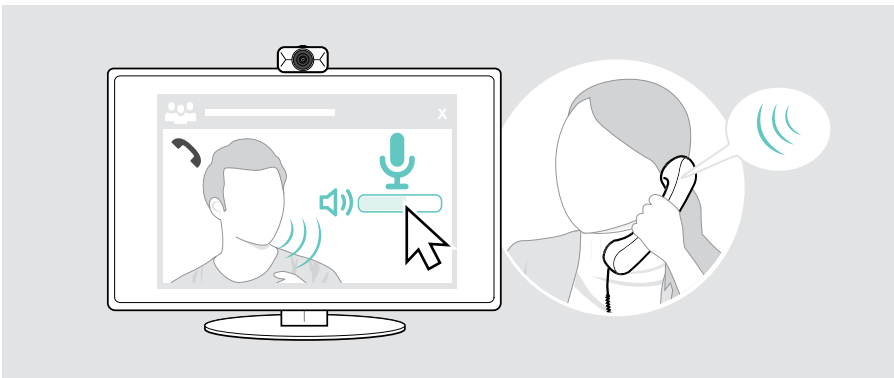
The S6 comes with two noise cancelling microphones for clear voice pickup.

- > Mute or unmute the webcam's microphones via your video conferencing platform or streaming software.



Changing the microphone volume

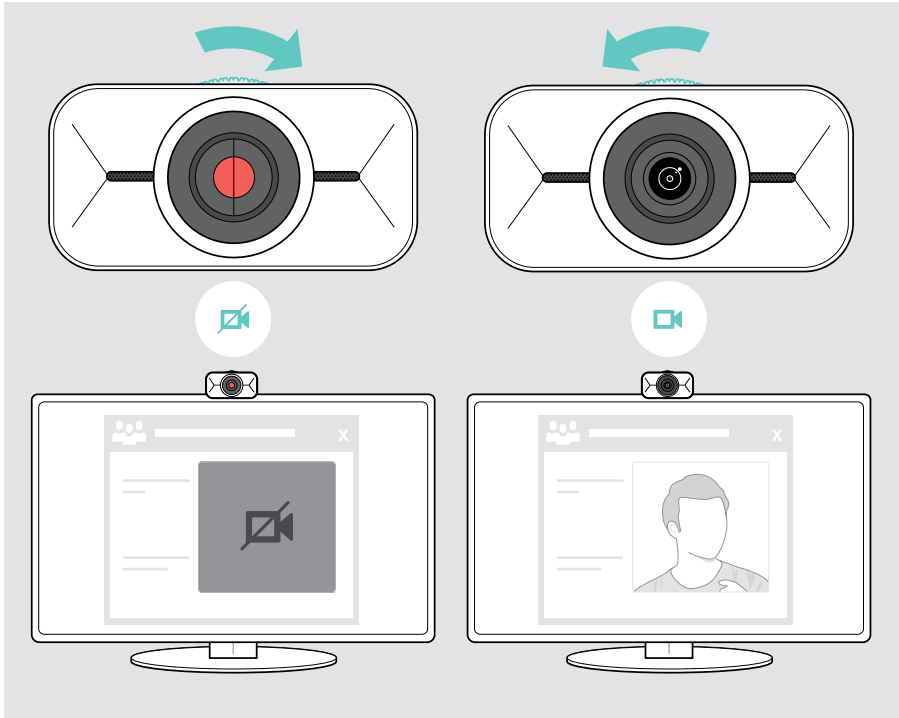
- > Initiate a call via your video conferencing platform to someone who will help you find the correct volume setting for your S6 microphones.
- > Change the microphone volume in your video conferencing platform and/or in your computer audio application.



Using the privacy shutter

For additional privacy, your S6 is equipped with a scroll wheel for disabling the webcam.

- > Turn the scroll wheel for privacy shutter:
 - clockwise, to close the lens **or**
 - counter-clockwise, to open the lens.



How to care for your S6

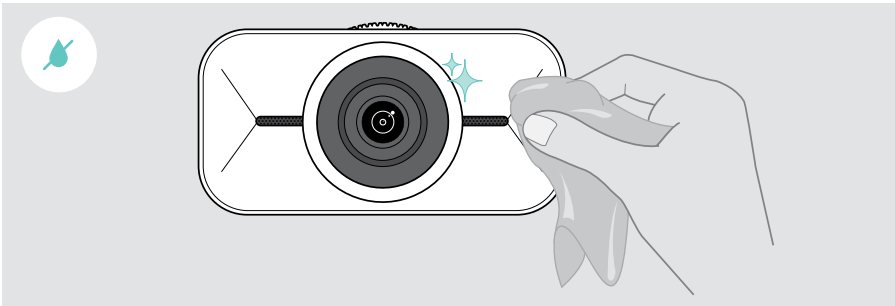
Cleaning the product

CAUTION

Liquids can damage the electronics of the product!

Liquids entering the housing of the device can cause a short circuit and damage the electronics.

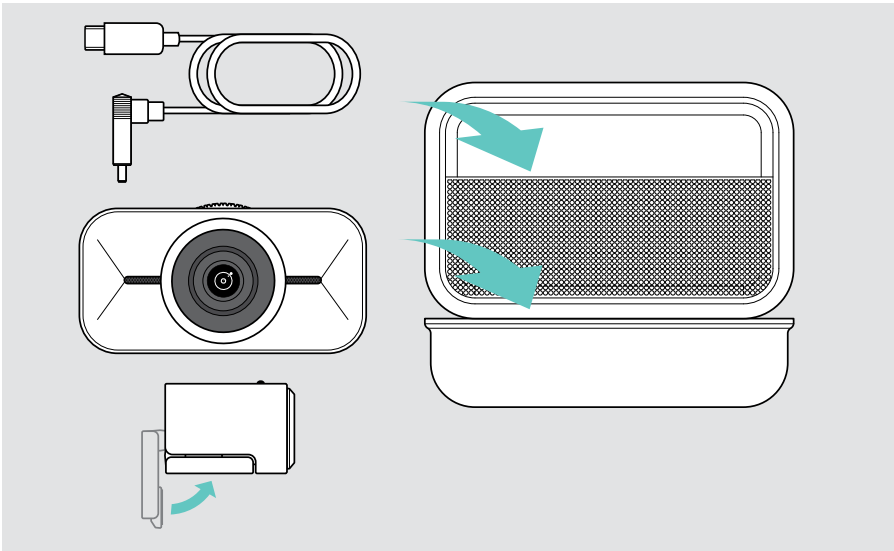
- > Keep all liquids far away from the product.
 - > Do not use any cleansing agents or solvents.
- > Use a dry cloth to clean the product only.



Carrying and storing the product

For carrying around or when not in use for extended periods of time, store the product in the carry case. This will help to avoid scratches and keep the product in good condition.

- > Unplug the USB-C cable and wind it up.
- > Unmount the webcam and fold up the mounting clip.
- > Put them in the carry case.



The USB-A cable is too long to be stored in the carry case. The USB-C cable is optimal when you want to use your S6 on the go.

If a problem occurs...

| Problem | Possible cause | Solution | Page |
|--------------------------------------|--|---|------|
| Webcam image not displayed correctly | Webcam position not optimal | > Align the height of the webcam. | 10 |
| | | > Change your position to be in front of the webcam. | – |
| | | > Change the position of the webcam on your screen/monitor or the position of your tripod. | 5 |
| | | > Change the zoom level. | 14 |
| No picture or audio | Connector not inserted correctly | > Check the cable connection. | 7 |
| | Microphones muted | > Unmute the microphones via your video conferencing platform or streaming software. | – |
| | Speaker(s) muted | > Unmute the speaker(s) of your connected device (e.g. laptop). | – |
| | Privacy shutter in use (lens closed) | > Open the privacy shutter. | 20 |
| | Webcam not selected as audio device (Microsoft Windows) | > Right-click the Audio icon. > Select the webcam under input as microphone. | – |
| Low video or audio quality | Poor internet connection | > Check your internet connection performance. | – |
| | Plastic protection on lens not removed | > Remove the plastic protection. | – |
| Floating menu not available | EPOS Connect not installed on the connected device | > Install EPOS Connect. | 8 |
| | Computer has been turned off / Floating menu has been closed | > Open it via Floating menu button in EPOS Connect or the EPOS Connect icon in the task bar. | 12 |
| | | > Unplug the webcam's USB-C connector and plug it in again. The Floating menu will automatically open up. | 12 |
| Picture dark/light | Settings misadjusted | > Change the settings via the Floating menu or EPOS Connect. | 18 |
| | | > Click on "Reset" in the Advanced menu (Floating menu / EPOS Connect). | 18 |

If a problem occurs that is not listed here or if the problem cannot be solved with the proposed solutions, please contact your local EPOS partner for assistance.

To find an EPOS partner in your country, search at eposaudio.com.

EPOS



DSEA A/S

Kongebakken 9, DK-2765 Smørum, Denmark
eposaudio.com

Publ. 09/22, A01